

Alice in Winter Wonderland

by Janet Allard
& Michael Bigelow Dixon



**AN ENCHANTING
HOLIDAY ADVENTURE**

NOV 12 - DEC 18

PROFESSIONAL • LIVE • THEATRE

Welcome Back!

We hope that you, like our company, are feeling that we're emerging from what has been a particularly trying time, and you're ready to join in the celebration of our common humanity that this year's stories illuminate. Your presence is a gift for which we say thank you from the bottoms of our hearts.

WHY A DIGITAL PROGRAM?

By offering a digital program, we hope to reduce our carbon footprint and reduce printing costs. By using less paper, we reduce our carbon footprint and give you remote access to the program from anywhere. Also, without the space limitations of print, we look forward to adding more "bonus features"—such as extra articles and photos about each show—during the season.

COVID-19 PROTOCOL UPDATE

As our community relaxes COVID-19 prevention efforts, the risk to our work at the Commonweal increases. Just one case of COVID-19 among our artists onstage or backstage could put a stop to rehearsals and performances. While public health guidelines relax, we may maintain stricter policies to mitigate risk and help ensure our shows perform as planned. The most up-to-date information is available on our website. Thank you for your flexibility and effort in keeping our community safe.

LAND ACKNOWLEDGEMENT

We at the Commonweal Theatre acknowledge that we work and gather on the ancestral lands of the Dakota Nation and other Indigenous peoples. We recognize these Nations as the original caretakers of this land and acknowledge the injustices committed against them. We strive to promote healing and inclusion through storytelling, which is fundamental to our mission.

We are eager to share these meaningful and entertaining stories with you. Please stay safe and healthy. And thank you for coming to the Commonweal!



Hal Cropp
Producing Artistic Director

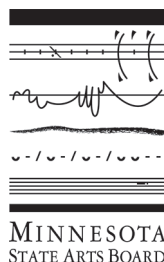


PROFESSIONAL • LIVE • THEATRE

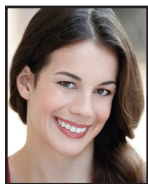


The Commonweal Theatre Company is a member of Minnesota Citizens for the Arts and a constituent member of Theatre Communications Group. This activity is made possible by the voters of Minnesota through a grant from the Minnesota State Arts Board, thanks to a legislative appropriation from the arts and cultural heritage fund.

**208 PARKWAY AVENUE N., P.O. Box 15
LANESBORO, MINNESOTA 55949
(800) 657-7025 • (507) 467-2525
COMMONWEALTHEATRE.ORG**



THE COMPANY



LIZZY ANDRETTA (she/her) is in her sixth season at the Commonweal. She appeared in *Dancing Lessons* and *A Christmas Carol* last season and previously in *The Elephant Man*, *Putnam County Spelling Bee*, *Dracula: Prince of Blood*, *Boeing Boeing*, and *Sanders Family Christmas*, among others. Other Commonweal credits: *Root River Anthology*, *Headspace* and *A Driftless Christmas* as well as choreographing for several shows. Lizzy earned an M.F.A. in Acting from the East 15 Acting School in England and a B.S. from Skidmore College. Originally from New Jersey, she now lives in Lanesboro with her beloved cat, Henry.



CODY BEYER (he/his) is thrilled to be joining this lovely community and extraordinary company for his first season at Commonweal. He received his B.A. in Theatre Honors from the University of Tennessee. Cody is an actor, designer, and builder who has been working in Chicago for the past seven years. He worked mostly with Theatre-Y and Hell in a Handbag Productions, with his favorite credits being *Macbeth* and *Stories of the Body*. As most people have felt, these last few years have proved tremendously trying, but this theatre and community have something truly special that Cody can't wait to add to.



STELA BURDT (she/her) is grateful to celebrate her 23rd season with our Commonweal family. Past onstage work includes roles in *Souvenir*, *Woody Guthrie's American Song*, *Crimes of the Heart*, *Zombies from the Beyond*, *A Midnight Dreary*, *Harvey*, and *Man of La Mancha*. In addition to performing, Stela is a music director, sound designer, freelance vocalist, and the Commonweal's Patron Relations Manager. Currently, Stela is in the role of a lifetime as mom to Kieran. Love and Light, #TeamScottyForever.



Working to better our communities every day.

Creating thriving communities starts by helping you work toward your hopes and dreams. **Let's talk.**

(507) 467-2145 | merchantsbank.com
118 Parkway Avenue N, Lanesboro

Member FDIC



We're proud to support
the Commonweal Theatre.

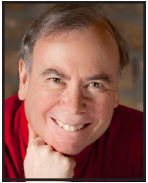


HAL CROPP (he/his) is in his 31st season, where favorite roles have been in *Come Back*, *Ghost-Writer*, *Dracula: Prince of Blood*, *Outside Mullingar*, *Sherlock Holmes: The Final Adventure*, *The Drawer Boy*, *To Kill a Mockingbird*, *Picasso at the Lapin Agile*, *Groucho*, and *Talley's Folly*. Selected directing credits: *I Love To Eat*, *Peter and the Starcatcher*, *Brand*, *Heartland Portrait*, *Measure For Measure*, *Peer Gynt*, *A Midnight Dreary*, *Ghosts*, and *Little Shop of Horrors*. Hal holds a B.A. from Brown U., M.B.A. from Santa Clara U., and an M.F.A. from National Theater Conservatory. He was the Sally Irvine Award winner for Initiative, 2006.



ELIZABETH DUNN (she/her) is in her eighth season with the Commonweal. Favorite credits include *Boeing Boeing*, *On the Verge*, *Scotland Road*, *The 25th Annual Putnam County Spelling Bee*, and *Dracula: Prince of Blood*. She has traveled in multiple tours with Prairie Fire Children's Theatre and lived in Chicago for a stint, where she studied improvisation at iO (formerly ImprovOlympic). Originally hailing from Georgia, Elizabeth is a 2010 graduate of Valdosta State University where she earned her B.F.A. in Theatre Arts.

KELSEY HEATHCOTE (she/her) serves on the Commonweal's production team as the Technical Director and Assistant Production Manager. Since completing her apprenticeship in 2018, her work here has been seen onstage in several shows, including *The 25th Annual Putnam County Spelling Bee*, *Peter and the Starcatcher*, and *Bakersfield Mist*. In 2020, Kelsey designed the set, sound, and lighting for *Fully Committed* and was one of two audio engineers for *A Drifless Christmas*. She looks forward to many new and exciting challenges as we reopen our doors this year!



DAVID HENNESSEY (he/his) serves on the development team and has played in more than 50 shows over 23 years, including *A Christmas Carol* last season. Other favorites: *Headspace Theatre*, *Holmes and Watson*, *It's a Wonderful Life: A Live Radio Play*, *The Drawer Boy*, and *The Rainmaker*. He designed costumes for *Ice Maidens* and *A Streetcar Named Desire*, oversees our audio descriptions for the visually impaired, and has led our COVID mitigation team since 2020. Other acting credits: In Heart Theatre, Park Square Theatre, Jungle Theatre, and American Players Theatre. He lives in Preston with Linda, his favorite scene partner for 49 years.



JACLYN JUNE JOHNSON (she/they) joined the Commonweal at the start of 2020. An arts administrator, actor, director, playwright, costume designer, and teaching artist, Jaclyn has credits across the country, working with companies such as St. Croix Festival Theatre, Children's Theatre Madison, Creede Repertory, Riverside Shakespeare Festival, Riverside Theatre, Chicago's UTG Improv Theatre. Jaclyn received her B.A. from Cornell College. She wishes to thank: her family, friends, spouse, and their cats for their encouragement and love; and you for your support of the arts and specifically to the uniquely healing community of theatre.

RIVKA KELLY (she/her) joined the Commonweal family in 2020 as the Production Stage Manager. Rivka hails from California but has spent the last decade as a traveling stage manager, mostly around the Midwest. Selected stage management experience includes shows with American Players Theatre, Milwaukee Repertory Theatre, Skylight Theatre, and Two Crows Theatre. Rivka received her B.A. from the University of Vermont. She's grateful for this welcoming community and her amazing family's support.



RACHEL KUHNLE (she/her) returned to the Commonweal in 2018, seven years after completing her acting apprenticeship in which she performed in *Metamorphoses* and *To Kill a Mockingbird*. She was last seen on stage as June in *Sanders Family Christmas*, and directed last year's *Dancing Lessons*. Rachel

Admission: \$5 Adults, \$4 Children & Seniors

Rent the Jem for your next party or event!

Visit the Jem

Harmony, MN

Visit the Jem

Harmony, MN

JEMMOVIES.COM
Like us on Facebook

Bring your own bucket for a discount on Popcorn!

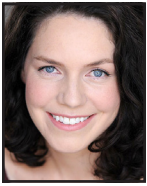
completed her M.F.A. in acting at the University of South Carolina in 2017. She loves her cats, her baby, and is grateful to her husband, Josiah, for being awesome.



JOSIAH LAUBENSTEIN (he/his) joined the Commonweal late in 2018. He is the resident videographer and most recently appeared in *Dancing Lessons*. Before moving here, Josiah worked at Festival Theatre in St. Croix Falls, WI, as Marketing Director, and acted in nine productions over two years. Prior to that, Josiah lived in Columbia, SC, where he earned his M.F.A. in acting from the University of South Carolina. Josiah is a proud member of Glassbox Theatre Group, a co-founder of Highway Walkers Media Company, and is happily married to Rachel Kuhnle. He is besotted with their first child, Franny.



BRANDT ROBERTS (he/his) is in his ninth season at the Commonweal. Favorite roles include Robert in *Boeing Boeing*, John Merrick in *The Elephant Man*, Mr. Coffee in *On the Verge*, Ragnar Brovik in *The Master Builder*, and Fancourt Babberley in *Charley's Aunt*. Cherished regional credits include *Measure for Measure* and *Henry IV Part I* at the Shakespeare Theatre of New Jersey. Brandt's original one-person show, *The Art of the Entertainer*, has been performed in several states and was adapted into an online presentation in 2020. Roberts holds a M.F.A. in Performing Arts from the Savannah College of Art and Design.



Laurie Roberts (she/her) is excited to join the Commonweal this season. Before moving to Lanesboro, Laurie worked with A Red Orchid Theatre, Hell in a Handbag, Facility Theatre, Theatre Y, and Red Tape Theatre in Chicago. Before then, she performed in Cincinnati at Know Theater and Cincinnati Playhouse in the Park. Some of her favorite work has been devised and performed internationally in Pontlevoy, France, and at the Edinburgh Festival Fringe. Laurie has also worked as an acting teacher, movement director, and choreographer. She earned her M.F.A. in Acting at the U. of South Carolina. Love to Duke Orsino.

JODI RUSHING (they/their) is in their fourth season at the Commonweal. Their favorite credits include *An Iliad* (Wealhouse), *On The Verge, I Love To Eat*, and *The Complete Works of William Shakespeare (Abgd.) (Rvsvd.)*. Before their tech apprenticeship with the Commonweal in 2019, they stage managed for Doniphan Dance Project in Tupelo, MS, and served as the conference manager for the 2019 ACDA South Conference. Jodi holds a B.A. in Theatre and Film from the U. of Mississippi.



TIM SAILER (he/his) apprenticed at the Commonweal in 2009 and is now in his fifth season with the company. He appeared in *A Christmas Carol*, *The Rainmaker*, *Picasso at the Lapin Agile*, and *An Enemy of the People*. Other MN work includes performances at Park Square Theatre, Theatre L'Homme Dieu, and the Orchard Theater Collective. He spent five years with the American Shakespeare Center (Staunton, VA), where he played more than 50 roles in 35 plays. Other regional work: UT Shakespeare Festival, TX Shakespeare Festival, Houston Shakespeare



Looking Forward
to a Great
2022 Season

Local Design Talent
Proudly Supporting
Local Professional
Theatre



211 11th avenue nw, rochester, mn 55901 507.206.6201

Festival, and AR Shakespeare Theatre. Tim holds an M.F.A. from the University of Houston and is also an audiobook narrator.



ADRIENNE SWEENEY (she/her) is grateful to be in her 22nd season with the Commonweal, serving as the Assoc. Art. Dir. and Dir. of External Relations in addition to artistic roles. From Philadelphia, she holds an M.F.A. in acting from the U/AZ. A commercial voice talent, she can be heard regionally on radio and TV. Favorite shows here include last season's *A Christmas Carol*, in which she played Scrooge. Other favorites: *Silent Sky* (director), *Boeing Boeing*, *Steel Magnolias*, *Outside Mullingar*, and *Sylvia*. Adrienne believes that the act of sitting together in the dark sharing stories can help bring light to the world, something we all crave now more than ever. She looks forward to sharing time and space with you.



JEREMY VAN METER (he/his) is enjoying his eleventh season in residence at the Commonweal. Favorite credits here include C.K. Dexter Haven in *The Philadelphia Story*, Anthony Reilly in *Outside Mullingar* and the title role in *Dracula: Prince of Blood* by Scott Dixon. His professional career began at The Barter Theatre in Virginia, and he has appeared regionally at Riverside Theatre, Illinois Shakespeare Festival, and Great River Shakespeare Festival. Jeremy holds an M.F.A. in Acting from the U. of Iowa and makes his home in Lanesboro with his lovely and extremely talented wife, Catherine Glynn.

LOCAL FOOD • DOWNTOWN LANESBORO











www.pedalpusherscafe.com | 507-467-1050

NIAGARA CAVE

Nationally recognized among best U.S. caves
One of "Ten Most Incredible Natural Wonders in MN"

Harmony MN



- underground waterfall
- stalactites & stalagmites
- 1-hour guided tour
- ancient fossils
- gemstone mining
- 18-hole mini golf

Voted BEST Family Destination 2009-2015

Niagara Cave

★ 2 miles 30

(507)886-6606

www.niagaracave.com

Amish Tours of Harmony

In the Sugar Plum House on the Village Green & 45 Main Ave. N., Harmony, MN

Experience a Lifestyle...

- where horse & buggy still provide the transportation
- the home is lighted by kerosene lamps
- water is heated on a woodburning stove

Enjoy an exciting tour with one of our knowledgeable guides

- Mini Bus Tours
- Car Tours
- Group Bus Tours
- Spring through Fall
- No Sunday Tours



For Advance Tickets & Information
(507) 886-2303
www.amish-tours.com



Lori & Oakley

GRANNY'S



LIQUOR

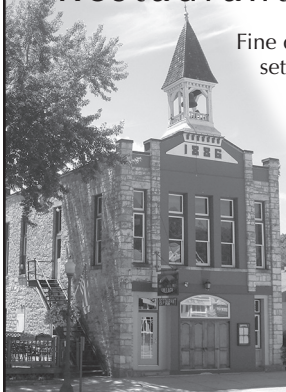
COME IN AN LET *Oakley*
HELP YOU SELECT A TASTY CHOICE!

Open 7 Days!

(507) 467-2700 • 113 Parkway Ave, Lanesboro

www.grannysliquor.com

Old Village Hall Restaurant & Pub



Fine dining in a casual setting. On the deck or in the upstairs dining room.

Wine Spectator
Award of Excellence

Reservations
Recommended

(507) 467-2962

111 Coffee Street
Lanesboro

www.
oldvillagehall.com

ORGANIC COFFEE

Parkway Market & Coffeehouse
--Open Daily--
Corner of Coffee Street & Parkway Avenue

Selling Fat Cattle

Market Cows & Bulls
Wednesday Auctions at 8:30 AM

Selling all classes Livestock
Friday Auctions at 10:30 AM

Special Feeder Cattle & Breed Cow Auctions
Scheduled thru the Fall & Winter

Joe Nelson, Owner Cell: 507-450-6763 Barn: 507-467-2192
402 Coffee St E, Lanesboro, MN 55949 • LanesboroSalesCommission.com



Stop in for breakfast or lunch at the
Stockyard Cafe! Open on sale days.

Minnesota Lanesboro

"Your Community Banks for Generations."

Fountain, MN
(507) 268-4321
www.fsbfountain.com

FSB ountain



Root River

—STATE BANK—
CHATFIELD MN

Chatfield, MN
(507) 867-4120
www.rsbchatfield.com



Open Late After the Show
Bring your ticket stub in for \$1 off!

Two Decks • Live Music
Trivia Tues & Open Mic Thurs 7:30 pm

highcourtpub.com 507.467.2782
109 Parkway Lanesboro, MN

F&M *Community* BANK

WE MAKE
BANKING
EASY![®]

Personal Banking
Business Banking
Mortgage Lending
Certificates of Deposit
Online Bill Pay
Remote Deposit Capture

FMCOMMUNITY.com



PROUDLY
SERVING

PRESTON

CHATFIELD

ROCHESTER

SINCE 1911



PROUDLY
INSURING

LIFE & HEALTH
HOME
AUTO
BUSINESS
FARM

SINCE 1911



WE MAKE
INSURANCE
EASY![®]

F&M INSURANCE SERVICES

Service *You* Can Count On

100 Saint Anthony St. N. • 507.765.3387
RRIns@FMcommunity.com

Auto-Owners INSURANCE

LIFE • HOME • CAR • BUSINESS

www.dragonflybooks.com

GET A BOOK BUZZ...



DRAGONFLY
BOOKS

...and fly beyond your imagination
at Dragonfly Books.

Kate Rattenborg, Bookseller.

563-382-4275 • 112 West Water Street
Decorah • info@dragonflybooks.com

Blue Heron Knittery

Purveyor of fine yarns, knitting & crocheting
supplies, books & patterns



**CALL
AHEAD**
for
Current
Hours

www.BlueHeronKnittery.com

300 W. Water, Decorah, IA • (563) 517-1059

GROCERY
BULK
PRODUCE
DELI
CHEESE
MEAT
BAKERY
WINE/BEER
SUPPLEMENTS
BODY CARE

COOPERATIVELY OWNED.

Specializing in organic & locally grown.



**ONEOTA
COMMUNITY
FOOD
COOPERATIVE**
decorah, iowa

312 West Water Street, Decorah • 563.382.4666 • www.oneotacoop.com • Open 9:00 am to 7:00 pm daily

EVERYONE CAN SHOP • EVERYONE WELCOME • NO MEMBERSHIP REQUIRED

Season Passes

*make
great
gifts!*



Gift
certificates
also available.

A Christmas Carol, 2021
Photo by Peterson Creative Photography & Design



101.1 THE RIVER

WINONA'S GREATEST HITS

LISTEN ONLINE AT WINONARADIO.COM
OR ON OUR NEW MOBILE APP



Download on the
App Store



GET IT ON
Google Play

ROCHESTER
 REP
THEATRE

www.rochesterrep.org

La Crosse Symphony Orchestra

2022-2023 SEASON

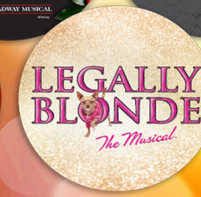
SOMETHING TO Believe in

Bringing you a season of refreshing movements that bring joy and sweetness.
order your season tickets today at lacrossesympphony.org



2022-2023 SEASON

BROADWAY SERIES LCT



BLACKBOX SERIES LCT



lacrossetheatre.org | (608) 784-9292

ABOUT THE PLAYWRIGHTS

Janet Allard is a playwright and musical bookwriter/lyricist. Her play *Vrooommm! A NASComedy* (a collaboration with Michael Bigelow Dixon) originated at the Commonweal and she is so happy to be back in Lanesboro with this new play. Her work is published by Samuel French, Playscripts, Stage Partners, and Smith and Kraus and has received over 400 productions worldwide. She is grateful for her time in MN which began with two Jerome Fellowships at The Playwrights' Center. She is a Fulbright Fellow, has an M.F.A. in Playwriting from Yale University, and studied at NYU's Graduate Musical Theatre Writing Program. www.janetallard.com

Michael Bigelow Dixon is a director, playwright and teaching artist whose Commonweal directorial credits include *On the Verge*, *Ghost-Writer*, *Outside Mullingar*, *Sherlock Holmes: The Final Adventure*, *Philadelphia Story*, *To Kill a Mockingbird*, *Turn of the Screw*, *A Christmas Carol*, and *Beautiful Again*. Michael worked as Literary Director at the Guthrie Theater, Resident Director at The Playwrights' Center, and Associate Artistic Director at Actors Theatre of Louisville. He's co-written more than two dozen published plays, co-edited more than 35 volumes of plays and criticism, and served as a Theatre Fellow at the National Endowment for the Arts. He is currently a volunteer at the Primate Rescue Center in Kentucky.

COMMONWEAL BOARD OF DIRECTORS

Alan Bailey, David Boen, Dan Christianson, Laura Gentry, Chris Hanson, Wendy Mattison, Ken Mogren, Sarah Peterson, José Rivas, Joan Ruen.

Please, No Food or Drink in the Theatre. Thank You!



No radio? No problem!

Find us on Facebook, Twitter and at wpr.org.



ASK AT THE BOX OFFICE ABOUT OUR ASSISTED-LISTENING DEVICES, SPECIAL SEATING FOR THOSE WITH MOBILITY IMPAIRMENTS, ASL-INTERPRETED PERFORMANCES AND VISUAL DESCRIPTION FOR THE SIGHT-IMPAIRED.

Alice in Winter Wonderland

by Janet Allard & Michael Bigelow Dixon

inspired by the stories and characters created by Lewis Carrol

Director	Michael Bigelow Dixon
Assistant Director	Josiah Laubenstein
Stage Manager	Sara Hueser
Assistant Rehearsal Stage Manager	John B. Nicol
Production Stage Manager	Rivka Kelly
Scenic Designer	Justin Hooper
Assistant Scenic Designer	Erika Soukup
Lighting Designer	Paul Epton
Costume Designer	Janis Martin
Puppet Designer	Michael O. Sanders
Music Director	Tim Sailer
Sound Designer	Josiah Laubenstein
Intimacy Coordinator	Jaclyn June Johnson

CAST

Dinah the Cat	Anita Bath
Grandpa (and others)	Cody Beyer
Alice	Maria Cina
Dad (and others)	Hal Cropp
Li'l Bit of Bacon	Heywood U. Cuddlemere
White Rabbit (and others)	Grace Cummings
Tweedle Dum	Hugh Jass
White Knight's Steed	Rick O'Shea
Mom (and others)	Laurie Roberts
Brother (and others)	Tanner Sabol
Mad Hatter (and others)	Alex Schlesinger
Mrs. Brusk (and others)	Adrienne Sweeney

Setting

A home nearby—now; and Wonderland—timeless.

Runtime is about 75 minutes with no intermission.

ALICE IN WINTER WONDERLAND is produced by special arrangement with Stage Partners (www.yourstagepartners.com).

Videotaping, audio recording, and photography of this production is strictly prohibited.

PHOTOSENSITIVE EPILEPSY WARNING

LED strobing and other flashing/blinking light effects will be used during this performance.

Patrons that may suffer from epilepsy and other visual light stimulation effects are advised to contact the front of house staff.

Sponsors:



Media Partner:



rochester
women



Use WiFi network:
"Commonweal Theatre Guest"

LARGE PRINT
PROGRAM
available
at the
Box Office

ALSO FEATURING

Anita Bath (Li'l Bit of Bacon) is an accomplished actress whose leading roles include: Wilbur's sister in Charlotte's Web, Pigpen in "Bath-time, Charlie Brown!" and in the title role of the Ham in Hamlet for which she won an Oscar (Meyer) Award.

Heywood U. Cuddlemo (Dinah the Cat) most recently appeared in Hugs and Kisses at Calico Stage. Her film credits include The Pink Panther, Cat Bellou and Cat on a Hot Tin Roof (with Kitty Carlyle). Heywood is a Leo, was a runner-up for the lead role in Lion King II: Simba's Pride, and is currently developing a one-cat show titled Feed Me!, funded by Meow Mix.

Justin Hooper (Scenic Designer) holds a B.A. in Theatre from Augsburg College. He began his professional career as a stage manager for Glimmerglass Opera in Cooperstown, NY. He returned to Minneapolis to become a scenic artist for the Guthrie. Later, he took side-gigs as History Theater's technical director, Pioneer Place's production manager, and AV technician for AVEX. He has designed scenery and lighting for myriad Twin Cities companies and has branched into the world of interior design—his portfolio includes two restaurants, a liquor store, and a brew pub. He is currently the technical director for Concordia University's Theatre Department in St. Paul.

Hugh Jass (Tweedle Dum) is thrilled to be making his stage debut tonight at the Commonweal. When not onstage he enjoys sitting on various boards. Jass's love for theatre was ignited when he saw the infamous nudist production of *Moon Over Miami* in Palm Springs. He would like to thank his cousin, Seymore Butts, for introducing him to theatre at a young age and helping him work his way up from the bottom.

Rick O'Shea (Whiskers, the White Knight Steed) bounced around Television and Film before returning to the stage here at the Commonweal. You may recognize him from *The Color of Money* with Tom Cruise where he played the cue ball. Or in the musical *Bing Bang Bam Whoops Sorry!* A one-time Olympic medalist, O'Shea won the bronze medal for Ireland in Boomerang in 1987. When not onstage, he enjoys a relaxing game of racquetball. Rick made the transition from playing cue balls when he recently won a game of Horse as a basketball.

Michael O. Sanders (Puppet Designer) has spent the past twenty years working professionally in theatre as a lighting designer, scenic designer, and technical director. He used his experience and varied skill set to make the transition to being the owner/artist of Plaid Elephant, LLC. Michael's work at Plaid Elephant specializes in... variety. He fabricates and paints custom terrain and miniatures for tabletop gaming, sculpts/molds/applies prosthetic makeups, builds practical FX units, designs/builds custom props, puppets, and funky décor pieces, teaches workshops, and much more. He is thrilled to collaborate with Michael Dixon again, and happy to work with the Commonweal.

Erika Soukup (Assistant Scenic Design, she/her) is excited to join the Commonweal this season. She is a recent graduate from Concordia University in St. Paul, MN where she received her B.A. in Theatre. She is currently working with several companies, including the Guthrie, History Theatre, and Yellow Tree Theatre as a carpenter and scenic artist. Erika is grateful to have the opportunity to join the community of the Commonweal Theatre.



We proudly
support
Commonweal Theatre!

Whatever your print needs, we have you covered. Catalogs, booklets, brochures, flyers, business cards, signs, banners, wall & floor graphics, POP displays, trade show materials and much more. We offer layout, design, digital printing, variable data, offset printing with inline coating, UV coating, full service bindery and delivery. In addition to printing, we offer complete mailing services and fulfillment.

We are your full service printer!

1416 Valleyhigh Drive NW Rochester, MN 55901 • 507-288-7788 or 800-298-7780 • www.johnson-printing.com

NOTES FROM THE DIRECTOR

Every day we learn more and more about what's happening gazillions of miles away out there in the universe, and at the same time, more and more about microscopic forms of life on our own planet. We are surrounded by things outrageously grand and ridiculously tiny, and how different is that from the large and small objects that so amaze Alice in Wonderland? Now we're even learning to understand thoughts and sounds of other animals...and even how plants communicate! That happens to Alice, as well.

Sometimes I suspect we've grown indifferent to the wonders of our world because they seem either out of reach or they're drowned out by the volume of the natural world and our fellow human beings.

Fantasy allows us to find our way back to wonder, to recognize and appreciate what seems unfathomable in the universe. By inviting us to venture beyond the literal, the quotidian, the observable, fantasy recruits our imaginations so we can envision other ways of being, thinking, and seeing. Lewis Carroll's fantasy also encourages us to laugh at our own rules and certainty; it suggests that we humans are not the measure of all things, and it invites us to question why we are the way we are, and what else we might be if we could be. Or, as Alice says, "If I had a world of my own, everything would be nonsense. Nothing would be what it is, because everything would be what it isn't. And contrary wise, what is, it wouldn't be. And what it wouldn't be, it would. You see?"

That's the kind of thinking we've embraced in *Alice in Winter Wonderland*, and we hope it helps you look anew at the wonder that surrounds us all, especially this time of year.

—Michael Bigelow Dixon

SPECIAL THANKS

Sullivan Canaday White, Jungle Theatre, Theatre in the Round Players, County 8 Pottery, Jennifer Pospichal, Tallulah Foldy, Kathy Burch, Louanne Hamann, Heidi Dybing, Kay Wold.

A lovely drive just minutes from Lanesboro on the **National Scenic Byway** Route 16 & located beside the

Root River 
State Bike Trail

LOKEN'S
RUSHFORD INN

rushfordinn.com 507-864-2222



concessions

available before the show and during intermission

Avoid the line and pre-order intermission drinks and snacks!



Cash only

APPRENTICE CLASS OF 2023

Happily, Commonweal has resumed our Apprenticeship Program this year. This 10-12-month, fully immersive, live-work program affords unique opportunities for young theatre professionals to study the craft & business of making live theatre. Learn more on our [website](#).



MARIA CINA (she/they) earned her A.A. in Commercial Photography from Madison College (WI) and her Acting Certificate from The Gaiety School of Acting in Dublin, Ireland. Currently on hiatus from studying Theatre Arts and Communication Studies at the U/MN Twin Cities, she plans to resume post-apprenticeship. Credits: Morticia in *The Addams Family Musical*, Kendra in *The Gulf*, Asst. Stage Manager for *Romeo and Juliet*. When not on stage, Maria can be found sipping tea and cuddling her cat, a fantasy novel close by. She sends love, hugs, and pinky promises to all her friends and family. instagram: @mariashe_



GRACE CUMMINGS (she/her) has been acting and performing for almost a decade. She started in Monroe, LA, at Strauss Youth Academy for the Arts. She moved to Natchitoches to join Northwestern State U's Theatre & Dance program, and to participate in the LA Scholars' College. Her one goal onstage is to tell a story that will connect her with her audience, but also with herself. Some roles include Elizabeth Proctor in *The Crucible*, Olivia in *Twelfth Night*, Prospero in *The Tempest*, and Deb in *Ordinary Days*. She debuted two roles: Julia in *In Memoriam of Lena*, written by Del Shores, and Emilia Bassano in *Emilia*, written by herself.

SARA HUESER (she/her) serves as the technical Apprentice for the 2023 season. Favorite credits include *The Wild Party*, *My Way*, and *The Other Place*. She has spent many seasons in Savannah, GA, and Greenville, SC, working on shows. Originally from Pennsylvania, Sara holds a bachelor's in Computer Engineering and a B.F.A. in Dramatic Writing from Savannah College of Art and Design.



JOHN B. NICOL (he/him) is incredibly excited to be returning to the theatre scene as an acting apprentice with the Commonweal. Born and raised in community theatres around Northeastern IA, he went on to receive his B.S. in Theatre Arts from MN State Mankato. While there he had the opportunity to play some fun roles including Matt Friedman in *Talley's Folly*, and Smee in *Peter and the Starcatcher*. In regional theatres, he had fun playing Willard Hewitt in *Footloose* at the Paul Bunyan Playhouse and Demetrius in *A Midsummer Night's Dream* with Free to the People Theatre.



TANNER SABOL (he/him) is thrilled to join the Commonweal Theatre for the first time! Growing up in Sioux Falls, SD, and graduating with a B.F.A. in musical theatre from the U. of North Dakota, he began acting in high school, being a part of the Oral Interpretation team all four years. Since then, he has played roles such as Felix in *The Odd Couple*, Sweeney in *Sweeney Todd*, Richard Hannay in *The 39 Steps*, and was also a performer in the American College Theatre Festival's 2020 Cabaret. He hopes to find another home away from home at the CTC!



ALEX SCHLESINGER (they/them) is ecstatic to be making their professional acting debut on the Commonweal Theatre's stage. Alex graduated from Luther College in 2021 with a B.A. in Theatre, and they are delighted to join the Commonweal's apprentice class this year. Favorite roles include Riff Raff in *The Rocky Horror Show*, Florizell in *The Winter's Tale*, and Amos Hart in *Chicago*. Alex would like to thank their mentor, professor, and good friend Jeff Dintaman for his years of support and sharing of knowledge that got Alex to where they are today.

Then vs. Now

Take a look at how we brought Carroll's world into ours!



The Tulgey Wood is a sneaking, dreary, snarling forest that is full of strange creatures like the Jabberwocky. In our version, haunting shadow puppets leer over Alice as she takes on this part of her journey.



Found only in the book, the Cook and the Duchess's child is a whiny, snorting baby. But for us, Li'l Bit O' Bacon shines as a hand puppet that will steal your heart.



One of the quirkiest things about Wonderland is their love for croquet... but using Flamingos and Hedgehogs! The Commonweal can't bring in wildlife, so enjoy our hand-crafted, one-of-a-kind stand-ins!



Alice through the eyes



1865

Alice's Adventures in Wonderland is written and released by Lewis Carroll.

1871

Through the Looking-Glass, the sequel to the beloved *Wonderland* story, is written and released by Carroll.

1951

Disney's *Alice in Wonderland* is released in New York and London on July 26th. It was Walt Disney Productions 13th animated film and featured the voice of Kathryn Beaumont, who would later voice Wendy Darling in the 1953 *Peter Pan*.

1955

The Mad Tea Party makes its debut as one of Disneyland's opening attractions. The recognizable spinning teacup ride currently resides at five of the six Disneyland-style theme parks around the world.

1985

Alice in Wonderland, an American two-part, made-for-television adventure, releases as a family fantasy musical film and stars Carol Channing as the White Queen.

1992-1995

Adventures in Wonderland, a live-action musical television series based on Disney's animated film, begins. In the series, Alice is portrayed as a girl who can come and go from Wonderland simply by walking through her mirror (a reference to *Through the Looking-Glass*).

2000

The "Alice in Wonderland" video game developed by Digital Eclipse Software is published by Nintendo for the Game Boy Color and makes the beloved Wonderland animated adventure an experience for all to enjoy.

2010

The live-action fantasy film *Alice in Wonderland*, directed by Tim Burton and starring celebrities like Mia Wasikowska, Johnny Depp, Anne Hathaway, and Helena Bonham Carter, is released to high reviews.

2022

***Alice in Winter Wonderland* written by Janet Allard and Michael Bigelow Dixon makes its world-premiere at the Commonwealth Theatre Company. We are so happy you're here!**

2016

Alice Through the Looking Glass is premiered as a sequel to the live-action film released in 2010 with its beloved stars Johnny Depp and Mia Wasikowska, but this time, directed by James Bobin.

2013-2014

The American fantasy-drama series *Once Upon a Time in Wonderland* is aired on ABC as a spin-off of the hit show *Once Upon a Time*.

Come enrich your world with song!

CHORAL ARTS ENSEMBLE

Now Planning our 2022 - 2023 Season! More info at www.ChoralArtsEnsemble.org

Visit the VALLEY

Rushford Peterson Valley, a hidden gem in scenic bluff country with space to breathe and explore! Located 14 miles east of Lanesboro on scenic Highway 16.

THINGS TO DO
Experience bluff country by trail or water!

- Root River Bike Trail: 60 miles of paved trail
- Bluff Country Scenic Byway
- Root River fishing, tubing, canoeing

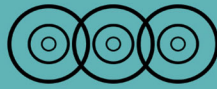
PLACES TO STAY
• Inns, campgrounds, vacation rentals

PLACES TO EAT
• Many local favorites

PLACES TO SHOP
• Basic necessities or items unique to the Valley

Find us online for a full list of activities and events
www.rushfordpetersonvalley.com

take root
Rushford Peterson Valley
MINNESOTA



LANESBORO ARTS



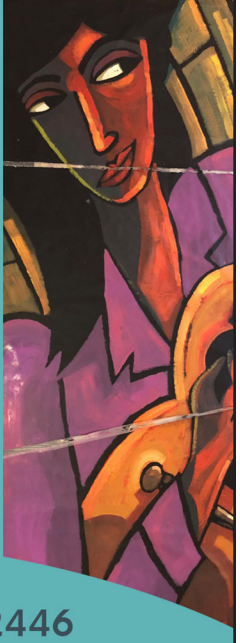
Galleries
year-round exhibitions

Rhythms on the Root
outdoor summer music

Art in the Park
Saturday, June 18, 2022

Arts Campus
public art & education

St. Mane Theatre
music, theater, dance, and more



lanesboroarts.org // 507-467-2446

We Can't Do This Without You

For 34 Seasons

the Commonwealth has been inspiring hearts, minds and souls. It would be easy to believe that these marvelous stories have come about because of the hundreds of talented artists who have called the Commonwealth home.

Easy, but far from the truth. The real heroes who make up this company are you, our audience and loyal supporters.

But your tickets only cover half of what it costs to create live, professional theater. For us to continue bringing theater magic to you and future generations, please consider a gift in support of our mission "to enrich the common good."



Here's How You Can Help:

MDC

"When the MDC was initiated, we immediately joined. This level of giving helps ensure a solid financial base for the organization to meet their annual expenses while planning for the future. We encourage you to join us in supporting the Commonwealth, so we all can continue to enjoy the wonderful productions we have come to treasure."

—Jon & Mary Hart

The heart of our giving programs, the **MDC** consists of individuals and households who make a non-binding, 10-year commitment of support. For a schedule of amounts and benefits, please see any staff member or visit the "donate" page on our website: www.commonwealththeatre.org

Planned Giving



"By including Commonwealth in our estate plan, we feel good knowing that we'll be helping to ensure that this gem will be here for future generations."

—Ken & Sally Mogren,
Winona, MN

Please consider remembering the Commonwealth Theatre in your planned giving. Visit our website at <https://commonwealththeatre.org/support/planned-giving/> for more information.



Any contribution you make to our lobby donation jar is deeply appreciated!

Sponsorships & Underwriting

There are myriad ways that you can play a starring role in supporting one of our mainstage shows, or even the entire season! Through these partnerships, we can maintain a high standard of artistic excellence while providing greater access to all. Sponsorship comes with its rewards. To learn about sponsorship or underwriting opportunities, including recognition and benefits, contact **Hal Cropp** at hal@commonwealththeatre.org, or (507) 467-2905 X203 or visit: www.commonwealththeatre.org/donate/

DONORS

THE PEOPLE WHO MAKE THE COMMONWEAL DREAM A REALITY

MDC pledges and all memorials made from **Jan. 1, 2021, to Feb. 15, 2022**. Due to space limitations, we cannot list all our donors here. Please find them on our website, www.CommonwealthTheatre.org. For information on all our individual donor programs, contact **Jeremy van Meter: 507-467-2905 ext.211**, jeremyvm@commonwealththeatre.org

INSTITUTIONAL DONORS IN 2021

McKnight Foundation
Minnesota State Arts Board

THE MDC

Our MDC members are the lifeblood of the Commonwealth. **Members donate annually** through their long-term pledges and receive unlimited admission, advance seating and more. *Heartfelt thanks* to these generous people—without them, we would not be here!

\$2,000+ per year

Fastenal Company
F&M Community Bank
Bob Kierlin & Mary Burrichter

\$1,000 - \$1,999 per year

David & Candace Arp
Bruce & Pauline Bailey
David Bange
Stephen & Martha Bartenhagen
Barb & Larry Berge
Kenneth Baughman & Leandra Sunseri
Sheri Borchering
in memory of Jack Michael Bostwick & Connie Williams
Scott Koon & Merri Bremer
Michael & Char Brown
Dan Christianson
Hal Cropp & Adrienne Sweeney
Jon & Chris DeVries
Phil & Heidi Dybing+
Ron & Rae Evenson
Laura & George Fix
Mark & Elaine Edwards
% Habberstad House
Bed & Breakfast
Jon & Mary Hart
Carol Heyl
Willa & Dave Holger
Barbara Jackman
Robert & Renee Jacobson
Bill & Lisa Kelly
Lou & Maureen Guillou
David & Gail Judisch
Mark & Kris Litzow
Lee & Ione Loerch
Eric & Andrea Miehlich
Chris Miller & Hank Taxis
Gail & Phillip Minerich
Ken and Sally Mogren+

John & Lynne Munter
Kurt Neuenfeld & David Watson
Ted Olson
Scott & Angie Taylor
% Pedal Pushers Café
Richard & Peggy Perry
Rob & Patty Porter
Kent & Juanita Ruby
Charles Ruen
David & Joan Ruen
Richard Rundle
Dale & Sue Scobie
Jim Sheeley
Julie & David Warner
Christopher & Nina Wendt

\$500-\$999 per year

Barb Soma
% Amish Experience
Barb Soma % E2 Boutique
Alan Bailey
Duane & Angel Bakke
Michael Bigelow Dixon
Scott & Karen Bingham % Thrivent Financial
David Boen
Heide Buettner
Joseph & Sarah Chase
Carol & Sheldon Clay
Bob & Alice Johnson
David & Karen Danielson
Linda & David Hennessey
Leslie & Jo Hittner
Craig & Tracy Hurley
Jane B. Jamison
Kapp Kapter & Maureen Jameson
Minette & Paul Johnson
Susan & Lyle Klug
Kurt & Ann Knodel
Rayson Lorrey & Wei-Lin Jung
Dr. Thomas & Leone Mauszycki
Jon & Sarah Pieper % Old Village Hall Restaurant
LeAnn & Gary Olson
Glencie Rhodas
Stephen & Marilyn Riederer
Jane Ryan
Carl Sandquist
Kevin & Leela Scattum
Chris & Mary Schmidt
David & Darlene Shaw
Daryl & Michele Thompson
Violet Walk

\$250-\$499 per year

American Legion
Post #40 Lanesboro
Blake & Beth Abdella
Mimi Abell
Zoe Abrahamson
Laura Adamson
Janey Afseth &

Dwight Scrabbeck
Shirley & Mark Ahlquist
Bari & Peter Amadio
Drs. John Boecker & Dory Gardner % Amethyst Dental Care
Harold & Angie Amsbaugh
Horace J. & Rose Andersen
Mary Anne Anderson & June Kazell
Asahi Loft of Harmony
Charles & Ronnie Aug
David & Lori Bakke
% Granny's Liquor
Russell & Cathryn Baldner
Joe & Sue Banken
Carolyn & Roger Barsness
Dave Beal & Carol Berteotti
Becky Becker
Kathryn & Brad Benke
Harvey Benson & Bonita Underbakke
Judi & Dick Berger
Gene & Renee Bergstrom
Andrew & Anita Bisek
JoEllen & Dean Blegen
Michaeleen Bonner & Scott Gottfried
Donald & Pat Borcharding
Craig & Nina Bren
Ann Brice & Bill Haviland
Kathryn Burch
Stela Burdt
William & Diane Burdt
Philip Burkholder
Jim, Kathy, Aaron & Colin Buzza
CRW architecture + design group
Charlotte & James Carey
David & Brenda Carlson
Paul & Bridget Carns
Elaine Case & Bill Wiktor
John & Sandra Castek
Ron & Nancy Christensen
John & Birgitte Christianson
Dr. Keith & Kathy Churchill
John & Jane Ciecko
George Cipov
Margaret & Neil Claus
Glee & Gordon Claussen
Gerald Clymer & Ardy Olds
Richard & JoAnn Cole
Debra Collum
Duane & Sonja Cook
Jim & Pat Cooper
Paul Cooper
Jeff & Lavon Court
Carlo Cuesta & Dana Gillespie
Jerry & Dottie Dallmann
Larry & Betty Danielson
Norman & Janette Decker
Joe Deden & Mary Bell

Bob Ditsch
Allen & Marcia Dollerschell
David Drury
Joseph & Lois Duffy
Carol & Marv Eggert
Henry & Carol Elwood
Hisako Y. & Dale Eppen
Herb Erickson & Helen Kolb
Leland & Jeanne Ferden
Carmen Fingerson
Anne Flynn & Jon Buggs
Dennis & Nancy Forsyth
Michael Fritzsche & Anne Beighley
Dick & Marge Fuller
John Gaddo & Nancy North
Tom & Lynne Gaffey
Jim & Carla Gallina
Shirley Gangstad
Gary & Elaine Gasset
William & Laura Gentry
Bill & Sarah Goff
Alan Goldberg & Kay Udey
Jackie Rehm
% Green Gables Inn
Sandra & Joel Grieshaber
Martha & Jim Griesheimer
Dale & Beth Haaland
Paul & Louanne Hamann
% High Court Pub
Richard & Diane Haight
Janet & Dennis Haller
Robyn Hansen
Chris & Jessica Hanson
Peggy Hanson & Frank Wright
Bill & Eileen Harguth
Dr. Gary & Jean Hayes
Kathie & LeRoy Haynes
Janice Heikes & Lee Zook
Paul & Jessica Hemenway
Beth Hennessy & Tom Barnes
Marian Maciej-Hiner
Betsy Holbrook & Dona Conway
Marilyn Holland
Dick & Bette Houtkooper
Linda Hyde
Jim & Becky Iverson
Troy & Jenna Iverson
Michele & Robert Jersak
Buster & Annette Johnson
Jerry & Patti Johnson
Linda G. Johnson
Tory & Julie Johnson
Karst Brewing
Mary & Ron Kaser
Janelle Kelleher
Norb & Nancy Kelly
Ed & Ann Keuper
Annette & Richard Kiehne
Julie & Tim Kiehne
Ross Kiehne
Sharyn & Bill Kiehne

COMMONWEAL THEATRE LEGACY SOCIETY
+ Indicates members.
Please consider the Commonwealth in your estate planning.

Contact Jeremy van Meter about this or any of our donor programs: (507) 467-2905 ext.211
jeremyvm@commonwealththeatre.org

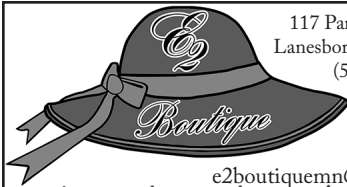
JuliaClaire Consignment & Variety



152 Main St. • Preston • 507-765-2399

- Quality clothing for the entire family
- Fashion accessories & Jewelry
- Books, Games & Videos
- Housewares & Home Accessories

www.facebook.com/affordableclothingprestonmn



117 Parkway Ave. N.
Lanesboro, MN 55949
(507) 467-2994

e2boutiquemn@gmail.com

Oakenwald Terrace

SOUTHERN MINNESOTA'S
PREMIER BED &
BREAKFAST

218 Winona St.
Chatfield, MN
(507) 867-3806

www.OakenwaldTerrace.com



AMISH EXPERIENCE



Gift Shop featuring locally handcrafted Amish Quilts,
Baskets & Furniture; Collectibles; Home Decor;
Garden Accents; & Specialty Foods

visit our Online Store

www.village-depot.com

105 Parkway Ave. N. • Lanesboro, MN 55949 • 507-467-2992



15 Modern Rooms

- Bridal Suite
- Fireplace & Whirlpool
- Smoke-free
- Open All Year

Hwy 16 West, Lanesboro, MN

Modern Convenience in a Quaint Country Setting

800-818-GABLES (4225) 507-467-2936

green@acegroup.cc

www.lanesboroweb.com/greengables

WALL OF CHOCOLATE

Parkway Market & Coffeehouse

--Open Daily--

Corner of Coffee Street & Parkway Avenue

HABBERSTAD HOUSE BED AND BREAKFAST



A relaxing retreat

HABBERSTADHOUSE.COM | 507-467-3560

Health Through Chiropractic

OFFICE
HOURS

M, T, W, F:
9AM - 6PM

Thursday:
Closed

River Hills
Chiropractic



102 W. Sheridan St.
Lanesboro, MN 55949

507-467-2629 (24-hr. call 507-450-2466)

Scandinavian Inn



A Bed & Breakfast in Lanesboro

Like theater? You'll love our
Mystery Nights! • 507-467-4500

www.scandinavianinn.com

507-467-8663 STONE MILL HOTEL & SUITES

Historic Lanesboro, Minnesota



WWW.STONEMILLSUITES.COM

1/2 block from the theatre.

DONORS — THE PEOPLE WHO MAKE THE COMMONWEAL DREAM A REALITY

Fred Kiel % Sacred Clay Inn Jay & Patricia Kim Karl & Patricia Knutson Robert & Sharon Knutson Marlene & Robert Kohner Gordy & Marsha Kuehne Rachel Kuhnle & Josiah Laubenstein Susan & Ron Kurth Dick & Mary Ellen Landwehr Martha & John Langowski Carolyn Larson Reginald & Jerilyn Laursen Richard & Penny Leake Connie & Glenn Leckband Karen A. Lischer Marcia & Bob Love Ron & Shaune Luck Susan & Lyle Luzum Timothy Mackey John & Sandra MacLaughlin Kathy MacLaughlin & Mike Augustin David & Ruth Marshall Matt Marshall Ramon G. Martin Nancy Martinson & Jeff Kamm Wendy & Mark Mattison Frank Mcanulty & Hertha Lange Roger & Lynn Meyer Gary & Sharon Miller Robert Milligan & Sharon Danes Wanda & Craig Mitchell Martin & Mary Lou Mohr Terry Morrison Greg Murphy &	Jean Daywitt Kay Nelson & Jim Parker Harland Nelson Linda Nelson & Mike Larsen Dick & Joan Niemiec Terry & Karen Neneman André & Madeline Novack Frieda & Ron Nowland Gary & LeAnn Olson Kenneth & Sharon Olson Dennis & Joan Paulson David & Becky Pederson Drew & Cheryl Pellett Robert & Phyllis Penheiter Ann & Noel Peterson Sarah Peterson % Peterson Creative Photography & Design Bonnie Gibson & Gretchen Schade Jim & June Reineke David Reichert & Jeanne Thoreson Pat & Joe Reymann Jarrett & Linda Richardson Terry Rindfleisch & Linda Hirsh Renata Rislow Steven & Pam Ristau José Rivas Janis Rockabrand & Jim Wolfe Kristie & Paul Roeder Daniel & Brenda Rooney David & Joy Roslien Craig Ross Edward & Katie Ruen Dave & Nancy Runningen Jimmy Schwichtenberg % S & A Petroleum, Inc.	Peter & Vicki Torkelson % Scandinavian Inn Mary Schaller Fred & Dianne Schjolberg Bruce & Kathy Schott Matt & Stacey Schultz Matthew & Lisa Schutte Jessica Schwier Kay Shaw Tom & Marcy Sherwood Linda Sifford & Tom Sautter Marilyn Silver in memory of Howard Silver Brian & Betty Singer-Towns Kent Simmonds & Lynne Sootheran Kathleen & Delbert Smith Jeanette Sobania & Pam Nelms Eugene & Sandra Somdahl Jim Spencer & Michele Valletta Charlie & Ann Sparks Michele & Rick Speltz Byron Stadvold Kim & Caren Stelson Rick & Cheryl Lamon % Stone Mill Hotel & Suites Jack & Kay Strobel Glenn & Pat Tabor Linda Tacke Edward Taylor Dave & Marti Gray % James A. Thompson House Diane & Bill Tisue Richard & Jeanne Toews Stephen & Julie Troutman Margaret Vagts Rick Walters & Sanna Yoder Joyce Walker	Sandy Webb Bette & David Weinmann Jim & Mary Wilder Kay Wold Richard & Louise Wolfgang Tom Woxland & Carol Birkland David & Jeanne Wright Joel & Julie Young
---	--	--	---

\$150-\$250 per year
(Single MDC Level)

Karen Acker
Constance Arneson
Jim Boeding
Terry & Renae Boydston
Bertha Boyum
Joanne Broady
Ingrid Callaghan
Naomi Craft
Elizabeth Doty
Jean Ellingson
Claire Ennis
Ruth Fjelstad
Elizabeth & James Fritz
Sherry Gribble
Doris Heikes
Jenine E. Jordahl
James Kunz
Philip Muehe
Gary Olson
Patty Peterson
Barbara Ruhter
Bev Spande
Stephen Strickler
Jeremy van Meter
Brett Winter
Jane Wolfram

CURRENT INDIVIDUAL DONORS

MORE PEOPLE WHO MAKE THE COMMONWEAL DREAM A REALITY

Listed below are all the donors, who are not MDC members, who generously contributed to the Commonwealth in 2021. To make a donation please use the "Get Involved" page on our website.

Aaron Preusse Aaron Silver Abbey Hellickson Adria Ramos Aimee Chastain Alessandra Chiareli Alex Schlesinger Alison & Brad Leathers Allen Kaufmann Allison Rupp Allyson Evans Alyssa Mahaffay Amanda (Davis) Lenweaver Amanda Rafuse Amy & Val Cordry Amy Kotsenas Amy McKnight Amy Rumschlag Andrea Miller Andy & Karen Heimdahl Andy Stella Anita Jean Hall Ann Bruce & Bill Haviland Ann & Mark Thompson Ann Baker Ann Ladd Ann Siverling Ann Yourell & Steve Sharp	Anne & Greg Yakle Anne Drecktrah Anne Marie & David Farning Anne Marie & Keith Kramlinger Annette Evenson Annice Miller Annie Cady Anonymous Donor Ardith Brown Arllys & Lorado Adelman Arlyn & Connie Picken Art & Mary Ann Ekern Arvid & Gaylene Mortensen Avis Jensen Barb & Don DeCramer Barb Burchill Barb Piper Barbara & Joel Mielke Barbara & Paul Klaas Barbara Beck Barbara Beeman Barbara Knutsen Barbara Mahr Barbara Wright-Quarton Barton & Pam Seebach Bebe & Pete Keith Ben & Mary Byker	Ben Gorman Benjamin O'Konski Benjamin Vander Kooi, Jr. Beth & Rue Riley Beth Hahne Beth Richardson Bethany & Robin Krom Bethany Werner Betty & Gary Pedersen Betty Bergsgaard Bill Knott Blake & Caleb Lauritsen-Norby Bob & Marilyn Larson Bob & Pat Fiedler Bob & Sheri Erickson Bob Anderson Bob Wittrock Bonnie Warrington Brandon Zembal & Tanea Mahanna Brenda Petersen Brent Meyer Brett Cook Brian & Kristine Lee Brian Baskett Briant & Betsy McMahon Brooke Smith	Bruce & Cynthia Wulfsberg Bruce & Jan Larson Bruce Nelson & Barb Watts Bryan & Kathy Kufus Bryan Roecker Camille Burke Candace & Gregory Carlstrom Carl Duyck Carl Lindberg Carla Noack Carlene & Cameron Roberts Carol & Clif Lucido Carol Dixon Carol Overland Carol Taylor Carolyn & Tom Smith Carolyn Warner Catherine Marks Cathy & Thomas Alpizar Chad Steinfeldt Charles & Donna Briscoe Cheryl & Bob Roediger Cheryl Dornink Cheryl Watson Chris & Anna Hanson Chris & Diane Johnson Chris & Jeff White
--	---	--	--

DONORS — MORE PEOPLE WHO MAKE THE COMMONWEAL DREAM A REALITY

Chris & Kacie Mixon
 Chris Suby
 Christiana Lundholm
 Christine Mattison
 Christopher & Suzanne Colby
 Christopher Brauckman
 Christopher Gerson
 Chuck & Mary Phillips
 Cindy & Gage Andretta
 Cindy Weber
 Claire Knocke
 Claire Seitzinger
 Connie Edwards
 Connie Minnick
 Cory & Rachel Poncelot
 Craig Johnson
 Curt & Beverly Proud
 Cynthia Fahser
 Cynthia Hallee
 Cynthia Huggenvik
 Dale & Sonya Nimrod
 Dan & Jayme Nelson
 Dan & Maureen Anderson
 Dan & Vicki Anderson
 Dana Huschle & Reva Parker
 Daniel & Brenda Rooney
 Daniel Stock & Megan Pence
 Daniel LaRocque
 Darlene & Anya
 Dammermann
 Darlene Schober
 Dave & Amanda Schutz
 Dave & Nancy Harrison
 Dave Johnston
 David & Helen Dechaine
 David & Shirley Mahoney
 David Arneson
 David Bellows
 David Gilmore
 David Pratzon
 David Rothstein &
 Sharon Akimoto
 David Susag
 Deb & Brian Benoy
 Debbie & Brad Olson
 Deborah Pitzzen
 Deborah Vosler
 Debra & Douglas Dewanz
 Debra Holmgren
 Dee Kimmel &
 Jenny Kennedy
 Denise, Theodore &
 Valerie Barthels
 Dennis & Carolyn Davidson
 Dennis & Marilyn
 Bettenhausen
 Dennis Magnuson
 Diana Percy
 Diane & Bill Tisue
 Diane & Duane Lambrecht
 Diane & Jon Closson
 Diane & Norbert Lovstuen
 Diane Carrievau
 Diane Puntenney
 Dianne & Fred Schjolberg
 Dick Buggs
 Dillon Denisen & Becky Trom
 Don Hoehn
 Don Quiram
 Donald A. Nelson
 Donald Stover
 Donna Scheck
 Doris McFarlane
 Dorothy & Jerry Denisen
 Dorothy Coons
 Dorothy Evenson
 Doug & Diana Lawrence
 Doug Schommer
 Douglas Croucher
 Douglas Tice
 Drue Ferguson &
 Ralph Zerbe
 Dustin & Dominique Luecke
 Earl Hammell &
 Kris Anderson
 Ed & Barb Armbruster
 Ed Pfannkoch
 Edith & Larry Langsev
 Edward & Karel Moersfelder
 Edward LeVieux
 Eileen Kuhnle
 Elaine Allen &
 Bryan Kingsriter
 Elaine & Harold Welda
 Elaine & Robert Kirk
 Elliott Rustad
 Elise Gregory
 Elizabeth & James Fritz
 Elizabeth Stewart &
 Paul Zellweger
 Elizabeth Lopp
 Elizabeth Meyer
 Ellen Macdonald
 Ellen Rasmussen
 Emily Spende
 Eric & Gayle Bunge
 Eric & Lisa Farnberg
 Eric Burdt
 Erica Jensrud
 Eugene & Margaret
 Hokanson
 Evelyn Schlichting
 Fae Wilson
 Florence Sandok
 Fran Sauer
 Fred & Ruth Kurtz
 Fred Smith
 Gail Prete
 Gale Nelson
 Gary & Anita Wilson
 Gary & Joanne Gilbertson
 Gary & Nancy Hayden
 Gary & Sharon Johnson
 Gary & Susan Corbisier
 Gary Danciu
 Gavin Nachtigall
 Gayle & Richard Garrity
 Gayle Waldera &
 Wayne Ledebuhr
 Gene & Sandra Dankbar
 George & Virginia Severson
 Geri & Russ Farnsworth
 Gerri Nielsen
 Glenice Rhodas
 Glenn & Leana Dixon
 Glenn Klapperich
 Gloria Hennessy
 Gloria Schad
 Gloria Schoenknecht
 Gregg & Kathy Carlsen
 Gregory Dawson
 Harald & Ann Lohn
 Harlan & Sonja Satrom
 Harlan Nelson
 Harriet Lawston
 Heather Tesoriero
 Heidi & Eric Becker
 Heidi & Larry Chladek
 Heidi Ricks
 Helen Larson
 Helene Zimberg
 Houston Dental
 Howie Tobak
 Ilene Edwards
 Irene & Fred Green
 Isabel Kramlinger
 Jack Uldrich
 Jackie & Tedd Johnson
 Jackie Remery-Pearson
 Jackie Wolter Luna
 Jaclyn Johnson &
 Jonathan Levine
 Jacqueline Kartman
 James & Alice Leidel
 James & Nancy Reynolds
 Jan & Gerald Nelson
 Jane & Clifton Grevstad
 Jane & Dennis Timmerman
 Jane Nelson
 Jane Peck
 Janet & Bob Calander
 Janet & John Johnson
 Janet & Tom Munger
 Janet Brauckman
 Janis & Rodney Tanner
 Jay Heiken
 Jay Hesley
 Jay Kobriger
 Jean Allen
 Jean Selle
 Jeanne & David Cornish
 Jeanne & Jon Logelin
 Jeff & Dawn Thompson
 Jeff & Ollie Lepper
 Jeff Daood
 Jeff Ruehle
 Jeffrey & Angela Raddatz
 Jeffrey & Sara Staab
 Jeffrey Hatcher
 Jeffrey Bernardy
 Jenni Taggart
 Jennifer & Scott Wagner
 Jennifer Paloma Rafferty
 Jennifer Ryy
 Jerald & Terry Lichte-Molnar
 Jeremy DeGier
 Jeremy Lane
 Jeri Sebo
 Jerry & Su Ritter
 Jesse Labonne
 Jessica Michalski
 Jill Sicheneder
 Jillian Peltzman
 Jim & Dee Buchholz
 Jim & Elaine McNeil
 Jim & Monique Howe
 Jim & Sherry Oeltjenbruns
 Jo Marie Thompson &
 Robert Larson
 Jo Seton & Brad Wronski
 Joan Anderson
 Joan Laubenstein
 JoAnn & George Topness
 Joanne Broady
 Jody & Jay Myers
 Joe & Sheila Goetzke
 Joel & Brooke Pfeffer
 Joel & Kathryn Anderson
 John & Arlene Nelson
 John & Debbie Orenstein
 John & Karen Kristoff
 John & Kelly Vriezen
 John & Rose Wiater
 John & Mary Pederson
 John & Susan Eddy
 John Beatty
 John Bening
 John Dunleavy
 John Moseed
 Jolene Beddow
 Jon Anderson
 Jon Peterson
 Joseph & Joan Francois
 Joseph Gray
 Joseph Kalaidis
 Josiah Robinson
 Josie Papenfuss
 Joyce & Dennis Beekman
 Joyce & Drew Meyer
 Joyce Duede
 Joyce Pelnar
 Judith Bronson
 Judy & David Jacobson
 Judy & Dwight Boyum
 Judy Nelson
 Judy Trousdell
 Judy Wilder
 Julee Caspers Agar
 Julie & David Aanes
 Julie & Kevin Sutter
 Julie & Roger Deets
 Julie Aldrich
 June Torrison
 Karen Buggs
 Karen Greenslade
 Karen Heistand
 Karen L. Allen
 Karen Olson
 Kate Barr
 Kate Lamb
 Kate Martinson
 Kathleen Abrahamson
 Kathleen Lindblad
 Kathleen Quinn
 Kathryn & Stephen Struck
 Kathryn & Tom Rynders
 Kathy & Eric Thiss
 Kathy & Gary Huschle
 Kathy & Steve Delano
 Kathy & Tim Geisler
 Kathy Schoonhoven
 Katie Stodd Knapp
 Kay & George Spangler
 Kay Robinson
 Keith & Deborah House
 Keith & Jo Anne Agrimison
 Keith & Laney Lindor
 Keith & Natalie Johnson
 Kelli Venzke
 Ken & Gail Bittner
 Ken & Karen Bittner
 Ken Kidd
 Ken Nichols & Sharon Wonsli
 Kendra Weber
 Kent & Barbara Nelson
 Kent & Cindy Hofer
 Kent & Janice Johnson
 Kent & Karen Bonte
 Kent Swan
 Kevin Brinkmann
 Kevin Drake
 Kevin O'Brien
 Kim & Jean Pierre Menard
 Kimberly Hoffmann
 Kirby Bennett &
 Phil Losacker
 Kirsten Welge
 Krist Johnson
 Kristen Jacobs-Andresen
 Kristin Musselman
 Kristine & Michael Larson
 Kristine Claussen
 Kyle Swanson
 Larry Iverson
 Laura & Duane Hookom
 Laura & Kevin Horihan
 Laura Demuth
 Laura Tills

DONORS — MORE PEOPLE WHO MAKE THE COMMONWEAL DREAM A REALITY

Laurice Kneeskern
 Laurie & Joel Kramer
 Laurie Bryant
 Laurie Everitt
 Lawrence Kerzner
 LeAnn Bollum
 Leanna Rubin
 Lee Gundersheimer
 Leslie & Kevin Sand
 Leslie Levine
 Lester & Dianne Dunn
 Letitia & Glen Kopperud
 Liane Henkell
 Lilly & Mark Jensen
 Linda & Bradley Quarderer
 Linda & Dave Harvey
 Linda Curtis
 Linda Long
 Linda Watson
 Linnea & Tom Nicol
 Linnea Sodergren
 Lisa & Bret Kluehn
 Lisa & John Conzemius
 Lisa Pearson
 Liz Curran
 Lizzy Andretta
 Lois & Clarence Shub
 Lois Peterson
 Loren Baldus
 Lori Sims
 Lorraine Borowski
 Louanne O'Brien
 LouAnne Stabb
 Luann Wilcox
 Lynelle Osgood
 Lynn Krapp
 Lynn Lanners
 Lynne & Willard Jacobson
 Lynne Kirklind
 M. Robert Ayerhart
 Marcy & Tom Sherwood
 Maren Zincke
 Margaret Lambert
 Margaret Petersen
 Marianne & Harro Hohenger
 Marilyn & Ron Reis
 Marilyn Harstad
 Marilyn Schwab
 Mark Muggli &
 Carol Gilbertson
 Mark & Claire Dunn
 Mark & Gay Herzberg
 Mark & Ivy Pillers
 Mark & Jeanne Olson
 Mark & Kelly Baer
 Mark Dannenberg
 Mark Diez
 Mark Hamann
 Mark Miedtke
 Mark Nelson
 Mark Sampson
 Mark Schreiter
 Mark Weiers
 Marlene Michel
 Martha Baird
 Marty Schuster
 Marvin Grant &
 Carolyn Hensrud
 Mary Evans
 Mary Finnerty
 Mary Frantz
 Mary Hoffman
 Mary Jo Ellingson
 Mary Lee Eischen &
 Bob Stuber
 Mary Lillestol

Mary Sack
 Mary Waudby
 Mary West
 Matthew & Karen Quanrud
 Maureen Johnson
 Meellee Fish
 Megan Hanks
 Melina Cohen
 Melonie Carstensen
 Merritt Olsen
 Michael & Kim Farber
 Michael & Moira Majerle
 Michael & Trudy Kamper
 Michael Austin
 Michael Bowler
 Michael Clemens
 Michael Hill
 Michelle & Matthew
 Moersfelder
 Michelle Barnes
 Michelle Cochran
 Mike & Meg Hennessey
 Mike Lynn
 Mikey Cohen
 Mollie & John Theel
 Mullen Dowdal
 Muriel & Jim Pemble
 Nancy & Michael Stanek
 Nancy Brubaker
 Nancy Movall
 Nancy O'Reilly
 Nancy Toensing
 Naomi Craft
 Nathan & Denise Davidson
 Nathan Dungan &
 Susan Hawks
 Nathan Laubenstein &
 Heather Hanft
 Nathan Semsch
 Nathaniel Barmore
 Neal & Marie Buethe
 Nicole Pearson
 Nile & Kay Fellows
 Norah Bringer
 Norma Budzinski
 Owen Ziemer
 Pam Kopriva-Barnes
 Pamela Flattum
 Pat & Joan Quinn
 Pat & Mark Anderson
 Pat Hinkie
 Pat Johnson
 Patricia & James McIntosh
 Patricia Carlberg
 Patricia Sample
 Patrick & Linda Smith
 Patti & Jerry Johnson
 Patty & Lu Paulson
 Patty Connelly
 Paul & Sue Anderson
 Paul Batalden
 Paul K. Schulte
 Paul Kiehne
 Paul Laplante
 Paul Stevens
 Paula Craig & John Lieske
 Pauline Christensen
 Peggy Hanson &
 Frank Wright
 Peter & Lisa Bakken
 Peter & Nancy Breyfogle
 Peter Borg
 Peter Moore
 Peter Seed
 Phil & Pam Iasevoli
 Phil Albu

Phil Strom
 Preston & Connie Hollister
 Rachel Tichy
 Randy & Linda Prudoehl
 Randy & Sheryl Chapman
 Randy Schenkat
 Raymond & Judy Auger
 Rebecca Benson
 Reggie Shones
 Rev. Betsy Dartt
 Rich Brunner
 Rich Kasacek
 Richard & Carol Eick
 Richard & Nancy Blum
 Richard Dietman
 Richard Gozia &
 Elizabeth Holloway
 Richard Kaiser
 Rita Haugh
 Robert & Bonnie Flom
 Robert & Linda Railey
 Robert & Lois Buntz
 Robert Angelici
 Robert Gaines
 Robert Gardner
 Robert Geraghty
 Robert Lawson
 Robert Todd
 Roberta & Marvin Bringe
 Roberta Peterson
 Roger & Carolyn Greenlaw
 Roger & Denise Ring
 Roger & Emily Smith
 Roger & Joyce Peckover
 Roger Hegland
 Romi & Mark Wilhelm
 Ron Clark
 Ronald & Kathy Jensen
 Rose Johnson
 Rose Olmsted
 Rosemary Broughton
 Rosie Thacher
 Ruth & Phil Abrahamson
 Ryan & Sara Kling-Punt
 Sally & Morgan Ming
 Sally Novak
 Sandi Serdahl
 Sandy Kiel
 Sara & Stephen Galligan
 Sara Pecor
 Sara Templin
 Sara Xavier
 Sarah Crane
 Scott & Elyse Hawthorne
 Scott Roser &
 Lyubov Slashcheva
 Scott & Sarah Sailer
 Scott Holtz
 Scott Weber
 Sean McCauley
 Seth Jovaag
 Seth Kaltwasser
 Shannon Mastel
 Shari Chamberlain
 Sharon Price
 Sharry Hebert
 Sheila & Steve Arnold
 Shelly Billiet
 Sherry & Marc Nichols
 Shirley & Rod Miller
 Shreyasee Amin
 Sonja Cook
 Sonja Sola
 Stan Peal & Laura Depta
 Stan & Sharlene Milewsky
 Stan Stern

Stef O'Keefe
 Stephen & Cindy
 Peterson-Wlonski
 Stephen Carmichael &
 Susan Stoddard
 Stephen Houtz
 Steve & Marlene Maloney
 Steve Stricker
 Steven & Jody Skolnick
 Steven & Mary Jo Tittl
 Steven & Nadeane Schosow
 Steven & Sandra Hunt
 Steven Brillhart
 Steven Weekley
 Stuart & Nikka Vrieze
 Sue & Joe Banken
 Sue & Tom Holst
 Sue Carlson
 Sue Stott
 Susan & Bill Kling
 Susan d'Autremont
 Susan Scharmer
 Suzan & Lee Gass
 Suzanne Toce
 Suzanne Young
 Swen Neufeldt
 Sydney Paredes
 Tabitha Esbrook
 Tamara Marks &
 Bryn Geerdes
 Tammy Moen
 Ted Henry
 Teresa Grossell
 Terrence Sweeney
 Terri Calvert
 Terrisa & Bob Fisher
 Therese Durkin
 Thomas & Arlene Theye
 Tim Lenartz
 Timothy Mackey
 Todd & Dianna Berry
 Tom & Adele Greenlee
 Tom & Elizabeth Baum
 Tom & Joann Kujawa
 Tom & Joann Van Meter
 Tom & Julie Larson
 Tom & Karen Lucy
 Tom & Karen Vinson
 Tom & Peg Pursell
 Tom Cathcart & Karen Koch
 Tom Muschler
 Toni Carlstrom
 Tony & Patrice
 Vander Wielen
 Traci Ledford
 Tricia Baxter
 Troy & Deann Underwood
 Valerie Holcombe
 VaLois Wilbur
 Vangy & Carl Lundstrom
 Velma Brant
 Vern Riddle & Jennifer Wood
 Verna Peterson
 Vicki Donhowe
 Virginia Aug
 Walter & Susan Bradley
 Warren & Donna Schimunek
 Wayne & Joan Finnegan
 Wayne Rendahl
 Weldon Kuhn
 William & Juanita McGregor
 William & Judy Smithson
 William & Meg Moellering
 William Nelson

Peterson Creative

PHOTOGRAPHY & DESIGN

Custom Portraits
DESIGNED TO FIT YOUR LIFE.



CONTACT SARAH TODAY TO SCHEDULE YOUR SESSION.

Sarah Peterson, M. Photog., Certified Professional Photographer

WWW.PETERSONCREATIVEPHOTO.COM | 507.421.9906

 [petersoncreative](https://www.instagram.com/petersoncreative)  [petersoncreative](https://www.facebook.com/petersoncreative)  [petersoncreative](https://www.pinterest.com/petersoncreative)

FAMILIES | SENIOR YEAR | REUNIONS | CHILDREN