

# Leading Ladies



by Ken Ludwig



A SPARKLING  
SCREWBALL  
COMEDY

MAY 14 - AUG 27

PROFESSIONAL • LIVE • THEATRE

# Welcome Back!

We hope that you, like our company, are feeling that we're emerging from what has been a particularly trying time, and you're ready to join in the celebration of our common humanity that this year's stories illuminate. Your presence is a gift for which we say thank you from the bottoms of our hearts.

## WHY A DIGITAL PROGRAM?

By offering a digital program, we hope to reduce our carbon footprint and reduce printing costs. By using less paper, we reduce our carbon footprint and give you remote access to the program from anywhere. Also, without the space limitations of print, we look forward to adding more "bonus features"—such as extra articles and photos about each show—during the season.

## COVID-19 PROTOCOL UPDATE

As our community relaxes COVID-19 prevention efforts, the risk to our work at the Commonweal increases. Just one case of COVID-19 among our artists onstage or backstage could put a stop to rehearsals and performances. While public health guidelines relax, we may maintain stricter policies to mitigate risk and help ensure our shows perform as planned. The most up-to-date information is available on our website. Thank you for your flexibility and effort in keeping our community safe.

## LAND ACKNOWLEDGEMENT

We at the Commonweal Theatre acknowledge that we work and gather on the ancestral lands of the Dakota Nation and other Indigenous peoples. We recognize these Nations as the original caretakers of this land and acknowledge the injustices committed against them. We strive to promote healing and inclusion through storytelling, which is fundamental to our mission.

We are eager to share these meaningful and entertaining stories with you. Please stay safe and healthy. And thank you for coming to the Commonweal!



**Hal Cropp**  
Producing Artistic Director



## PROFESSIONAL • LIVE • THEATRE



**CLEAN  
WATER  
LAND &  
LEGACY  
AMENDMENT**

The Commonweal Theatre Company is a member of Minnesota Citizens for the Arts and a constituent member of Theatre Communications Group. Funding is provided in part by a grant from the Minnesota State Arts Board through an appropriation by the Minnesota State Legislature and by private funders.

208 PARKWAY AVENUE N., P.O. BOX 15  
LANESBORO, MINNESOTA 55949  
(800) 657-7025 • (507) 467-2525  
COMMONWEALTHEATRE.ORG



# THE COMPANY



**LIZZY ANDRETTA** is in her sixth season at the Commonweal. She appeared in *Dancing Lessons* and *A Christmas Carol* last season and previously in *The Elephant Man*, *Putnam County Spelling Bee*, *Dracula: Prince of Blood*, *Boeing Boeing*, and *Sanders Family Christmas*, among others. Other Commonweal credits: *Root River Anthology*, *Headspace* and *A Driftless Christmas* as well as choreographing for several shows. Lizzy earned an M.F.A. in Acting from the East 15 Acting School in England and a B.S. from Skidmore College. Originally from New Jersey, she now lives in Lanesboro with her beloved cat, Henry.



**STELA BURDT** is grateful to celebrate her 23rd season with our Commonweal family. Past onstage work includes roles in *Souvenir*, *Woody Guthrie's American Song*, *Crimes of the Heart*, *Zombies from the Beyond*, *A Midnight Dreary*, *Harvey*, and *Man of La Mancha*. In addition to performing, Stela is a music director, sound designer, freelance vocalist, and the Commonweal's Patron Relations Manager. Currently, Stela is in the role of a lifetime as mom to Kieran. Love and Light, #TeamScottyForever.



**HAL CROPP** is in his 31st season, where favorite roles have been in *Come Back*, *Ghost-Writer*, *Dracula: Prince of Blood*, *Outside Mullingar*, *Sherlock Holmes: The Final Adventure*, *The Drawer Boy*, *To Kill a Mockingbird*, *Picasso at the Lapin Agile*, *A Christmas Carol*, *Groucho*, and *Talley's Folly*. Selected directing credits include *I Love To Eat*, *Headspace Theatre*, *Peter and the Starcatcher*, *Brand*, *Heartland Portrait*, *The Wild Duck*, *Measure For Measure*, *Peer Gynt*, *A Midnight Dreary*, *Enchanted April*, *Ghosts*, and *Little Shop of Horrors*. Hal holds a B.A. from Brown University, M.B.A. from Santa Clara University, and an M.F.A. from National Theater Conservatory. He was the Sally Irvine Award winner for Initiative, 2006.



## Working to better our communities every day.

Creating thriving communities starts by helping you work toward your hopes and dreams. **Let's talk.**

(507) 467-2145 | [merchantsbank.com](http://merchantsbank.com)  
118 Parkway Avenue N, Lanesboro

Member FDIC

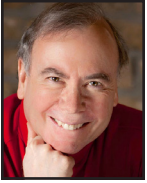


We're proud to support  
the Commonweal Theatre.



**ELIZABETH DUNN** is in her eighth season with the Commonweal. Favorite credits include *Boeing Boeing*, *On the Verge*, *Scotland Road*, *The 25th Annual Putnam County Spelling Bee*, and *Dracula: Prince of Blood*. She has traveled in multiple tours with Prairie Fire Children's Theatre and lived in Chicago for a stint, where she studied improvisation at iO (formerly ImprovOlympic). Originally hailing from Georgia, Elizabeth is a 2010 graduate of Valdosta State University where she earned her B.F.A. in Theatre Arts.

**KELSEY HEATHCOTE** serves on the Commonweal's production team as the Technical Director and Assistant Production Manager. Since completing her apprenticeship in 2018, her work here has been seen onstage in several shows, including *The 25th Annual Putnam County Spelling Bee*, *Peter and the Starcatcher*, and *Bakersfield Mist*. In 2020, Kelsey designed the set, sound, and lighting for *Fully Committed* and was one of two audio engineers for *A Drifless Christmas*. She looks forward to many new and exciting challenges as we reopen our doors this year!



**DAVID HENNESSEY** serves on the development team and has played in more than 50 shows over 23 years, including *A Christmas Carol* last season. Other favorites: *Headspace Theatre*, *Holmes and Watson*, *It's a Wonderful Life: A Live Radio Play*, *The Drawer Boy*, and *The Rainmaker*. He designed costumes for *Ice Maidens* and *A Streetcar Named Desire*, oversees our audio descriptions for the visually impaired, and has led our COVID mitigation team since 2020. Other acting credits include *In Heart Theatre*, *Park Square Theatre*, *Jungle Theatre*, and *American Players Theatre*. He lives in Preston with Linda, his favorite scene partner for 49 years.



**JACLYN JUNE JOHNSON** joined the Commonweal at the start of 2020. An arts administrator, actor, director, playwright, costume designer, and teaching artist, Jaclyn has credits across the country, performing and designing with companies such as St. Croix Festival Theatre, Children's Theatre Madison, Creede Repertory, Riverside Shakespeare Festival, Riverside Theatre, Chicago's UTG Improv Theatre. Jaclyn received her B.A. from Cornell College. She wishes to thank: her family, friends, spouse, and their cats for their encouragement and love; and you for your support of the arts and specifically to the uniquely healing community of theatre.

**RIVKA KELLY** joined the Commonweal family in 2020 as the Production Stage Manager. Rivka hails from California but has spent the last decade as a traveling stage manager, mostly around the Midwest. Selected stage management experience includes shows with American Players Theatre, Milwaukee Repertory Theatre, Skylight Theatre, and Two Crows Theatre. Rivka received her B.A. from the University of Vermont. She's grateful for this welcoming community and her amazing family's support.

## SEASON PASSES



See All 5 Shows  
for only **\$115!**

Enjoy a year of professional live theatre at **30% Off** the regular adult ticket price!

- Seating in advance
- Discounts for guests
- Friend Discount: see shows again for only \$15
- Discounts to special events



**RACHEL KUHNLE** returned to the Commonweal in 2018, seven years after completing her acting apprenticeship in which she performed in *Metamorphoses* and *To Kill a Mockingbird*. She was last seen on stage as June in *Sanders Family Christmas*, and directed last year's *Dancing Lessons*. Rachel completed her M.F.A. in acting at the University of South Carolina in 2017. She loves her cats, her baby, and is grateful to her husband, Josiah, for being awesome.



**JOSIAH LAUBENSTEIN** joined the Commonweal late in 2018. He is the resident videographer and most recently appeared in *Dancing Lessons*. Before moving here, Josiah worked at Festival Theatre in St. Croix Falls, WI, as Marketing Director, and acted in nine productions over two years. Prior to that, Josiah lived in Columbia, SC, where he earned his M.F.A. in acting from the University of South Carolina. Josiah is a proud member of Glassbox Theatre Group, a co-founder of Highway Walkers Media Company, and is happily married to Rachel Kuhnle. He is besotted with their first child, Franny.



**BRANDT ROBERTS** is in his ninth season at the Commonweal. Favorite roles include Robert in *Boeing Boeing*, John Merrick in *The Elephant Man*, Mr. Coffee in *On the Verge*, Ragnar Brovik in *The Master Builder*, and Fancourt Babberley in *Charley's Aunt*. Cherished regional credits include *Measure for Measure* and *Henry IV Part I* at the Shakespeare Theatre of New Jersey. Brandt's original one-person show, *The Art of the Entertainer*, has been performed in several states and was adapted into an online presentation in 2020. Roberts holds a M.F.A. in Performing Arts from the Savannah College of Art and Design.

**JODI RUSHING** is in their fourth season at the Commonweal. Their favorite credits include *An Iliad* (Wealhouse), *On The Verge*, *I Love To Eat*, and *The Complete Works of William Shakespeare (Abgd.) (Rvsd.)*. Before their tech apprenticeship with the Commonweal in 2019, they stage managed for Doniphan Dance Project in Tupelo, MS, and served as the conference manager for the 2019 ACDA South Conference. Jodi holds a B.A. in Theatre and Film from the U. of Mississippi.



**TIM SAILER** started at the Commonweal as an apprentice in 2009 and is now in his fifth season with the company. He appeared in *A Christmas Carol*, *The Rainmaker*, *Picasso at the Lapin Agile*, and *An Enemy of the People*. Other Minnesota work includes performances at Park Square Theatre, Theatre L'Homme Dieu, and the Orchard Theater Collective. He spent five years with the American Shakespeare Center (Staunton, VA), where he played more than 50 roles in 35 plays. Other regional work: UT Shakespeare Festival, TX Shakespeare Festival, Houston Shakespeare Festival, and AR Shakespeare Theatre. Tim holds an M.F.A. from the University of Houston and is also an audiobook narrator.



Looking Forward  
to a Great  
2022 Season

Local Design Talent  
Proudly Supporting  
Local Professional  
Theatre



211 11th avenue nw, rochester, mn 55901

507.206.6201



**ADRIENNE SWEENEY** is grateful to be in her 22nd season with the Commonweal, serving as the Assoc. Art. Dir. and Dir. of External Relations in addition to artistic roles. From Philadelphia, she holds an M.F.A. in Acting from the U/AZ. A commercial voice talent, she can be heard regionally on radio and TV. Favorite shows here include last season's *A Christmas Carol*, in which she had the great fortune to play Scrooge. Other favorites: *Silent Sky* (director), *Boeing Boeing*, *Steel Magnolias*, *Outside Mullingar*, and *Sylvia*. Adrienne believes that the act of sitting together in the dark sharing stories can help bring light to the world, something we all crave now more than ever. She looks forward to sharing time and space with you.



**JEREMY VAN METER** is enjoying his eleventh season in residence at the Commonweal. Favorite credits here include C.K. Dexter Haven in *The Philadelphia Story*, Anthony Reilly in *Outside Mullingar* and the title role in *Dracula: Prince of Blood* by Scott Dixon. His professional career began at The Barter Theatre in Virginia, and he has appeared regionally at Riverside Theatre, Illinois Shakespeare Festival, and Great River Shakespeare Festival. Jeremy holds an M.F.A. in Acting from the U. of Iowa and makes his home in Lanesboro with his lovely and extremely talented wife, Catherine Glynn.

## LOCAL FOOD • DOWNTOWN LANESBORO

**pedal pushers**  
*cafe*

**LOVE YOUR FOOD!**

[www.pedalpusherscafe.com](http://www.pedalpusherscafe.com) | 507-467-1050

# NIAGARA CAVE

Nationally recognized among best U.S. caves  
One of "Ten Most Incredible Natural Wonders in MN"

Harmony MN

- underground waterfall
- stalactites & stalagmites
- 1-hour guided tour
- ancient fossils
- gemstone mining
- 18-hole mini golf

Voted BEST Family Destination 2009-2015

Niagara Cave

★ 2 miles 30

**(507) 886-6606**  
[www.niagaracave.com](http://www.niagaracave.com)

## Amish Tours of Harmony

In the Sugar Plum House on the Village Green & 45 Main Ave. N., Harmony, MN

### Experience a Lifestyle...

- where horse & buggy still provide the transportation
- the home is lighted by kerosene lamps
- water is heated on a woodburning stove

Enjoy an exciting tour with one of our knowledgeable guides

- Mini Bus Tours
- Car Tours
- Group Bus Tours
- Spring through Fall
- No Sunday Tours

For Advance Tickets & Information  
**(507) 886-2303**  
[www.amish-tours.com](http://www.amish-tours.com)



Lori & Oakley

GRANNY'S



LIQUOR

COME IN AN LET *Oakley*  
HELP YOU SELECT A TASTY CHOICE!

Open 7 Days!

(507) 467-2700 • 113 Parkway Ave, Lanesboro

www.grannysliquor.com

# Old Village Hall Restaurant & Pub



Fine dining in a casual setting. On the deck or in the upstairs dining room.

Wine Spectator  
Award of Excellence

Reservations  
Recommended

(507) 467-2962

111 Coffee Street  
Lanesboro

www.  
oldvillagehall.com

# ORGANIC COFFEE

Parkway Market & Coffeehouse  
--Open Daily--  
Corner of Coffee Street & Parkway Avenue

## Selling Fat Cattle

Market Cows & Bulls  
Wednesday Auctions at 8:30 AM

Selling all classes Livestock  
Friday Auctions at 10:30 AM

Special Feeder Cattle & Breed Cow Auctions  
Scheduled thru the Fall & Winter

Joe Nelson, Owner Cell: 507-450-6763 Barn: 507-467-2192  
402 Coffee St E, Lanesboro, MN 55949 • LanesboroSalesCommission.com



Stop in for breakfast or lunch at the  
Stockyard Cafe! Open on sale days.

# Minnesota Lanesboro

"Your Community Banks for Generations."

Fountain, MN  
(507) 268-4321  
www.fsbfountain.com

# FSB ountain



# Root River

—STATE BANK—  
CHATFIELD MN

Chatfield, MN  
(507) 867-4120

www.rsbchatfield.com



Open Late After the Show  
Bring your ticket stub in for \$1 off!

Two Decks • Live Music  
Trivia Tues & Open Mic Thurs 7:30 pm

highcourtpub.com 507.467.2782  
109 Parkway Lanesboro, MN

# F&M *Community* BANK

WE MAKE  
BANKING  
**EASY!**<sup>®</sup>

Personal Banking  
Business Banking  
Mortgage Lending  
Certificates of Deposit  
Online Bill Pay  
Remote Deposit Capture

FMCOMMUNITY.com



PROUDLY  
SERVING

PRESTON

CHATFIELD

ROCHESTER

SINCE 1911



PROUDLY  
INSURING

LIFE & HEALTH  
HOME  
AUTO  
BUSINESS  
FARM

SINCE 1911



WE MAKE  
INSURANCE  
**EASY!**<sup>®</sup>

## F&M INSURANCE SERVICES

Service *You* Can Count On

100 Saint Anthony St. N. • 507.765.3387  
RRIns@FMcommunity.com

### *Auto-Owners* INSURANCE

LIFE • HOME • CAR • BUSINESS



www.dragonflybooks.com

GET A BOOK BUZZ...



DRAGONFLY BOOKS

...and fly beyond your imagination at Dragonfly Books.

Kate Rattenborg, Bookseller.

563-382-4275 • 112 West Water Street Decorah • info@dragonflybooks.com

Blue Heron Knittery

Purveyor of fine yarns, knitting & crocheting supplies, books & patterns



CALL AHEAD for Current Hours

www.BlueHeronKnittery.com

300 W. Water, Decorah, IA • (563) 517-1059

GROCERY  
BULK  
PRODUCE  
DELI  
CHEESE  
MEAT  
BAKERY  
WINE/BEER  
SUPPLEMENTS  
BODY CARE

COOPERATIVELY OWNED.

Specializing in organic & locally grown.



ONEOTA  
COMMUNITY  
FOOD  
COOPERATIVE  
decorah, iowa

312 West Water Street, Decorah • 563.382.4666 • www.oneotacoop.com • Open 9:00 am to 7:00 pm daily

EVERYONE CAN SHOP • EVERYONE WELCOME • NO MEMBERSHIP REQUIRED

But have you seen—?

A POIGNANT  
COMEDY

PLAYS THROUGH JULY 2

I Ought to  
Be in Pictures

by Neil  
Simon





# 101.1 THE RIVER

*WINONA'S GREATEST HITS*

LISTEN ONLINE AT [WINONARADIO.COM](http://WINONARADIO.COM)  
OR ON OUR NEW MOBILE APP



Download on the  
App Store



GET IT ON  
Google Play

ROCHESTER  
 REP  
THEATRE

[www.rochesterrep.org](http://www.rochesterrep.org)

# La Crosse Symphony Orchestra

2022-2023 SEASON

## SOMETHING TO

# Believe in

Bringing you a season of refreshing movements that bring joy and sweetness.

order your season tickets today at [lacrossesyphony.org](http://lacrossesyphony.org)



## SPRING 2022 PRODUCTIONS



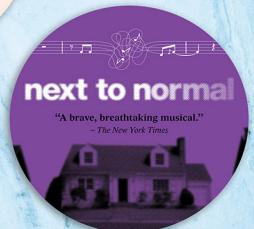
March 20, 2022



April 1-10, 2022



April 16, 2022



April 29-May 15, 2022

## ABOUT THE PLAYWRIGHT



**Ken Ludwig** has had six shows on Broadway, seven in London's West End, and many of his works have become a standard part of the American repertoire. His 28 plays and musicals have been performed in over 30 countries in more than 20 languages and are produced throughout the United States every night of the year.

*Lend Me a Tenor* won two Tony Awards and was called "one of the classic comedies of the 20th century by *The Washington Post*. *Crazy For You* was on Broadway for five years and won the Tony and Olivier Awards for Best Musical. In addition, Ken has won the Edgar Award for Best Mystery of the Year, two Laurence Olivier Awards, two Helen Hayes Awards, and the Edwin Forrest

Award for Contributions to the American Theater. His plays have starred, among others, Alec Baldwin, Carol Burnett, Tony Shaloub, Joan Collins, and Hal Holbrook.

His stage version of *Murder on the Orient Express* was written expressly at the request of the Agatha Christie Estate, and his latest play, *Dear Jack, Dear Louise*, won the 2020 Charles MacArthur Award for Best New Play of the Year and is optioned for Broadway. His book *How To Teach Your Children Shakespeare*, published by Penguin Random House, won the Falstaff Award for Best Shakespeare Book of the Year, and his essays are published in the *Yale Review*.

He is a graduate of Harvard and Cambridge and is a frequent guest speaker for groups as varied as The Oxford-Cambridge Society, The Jane Austen Society of North America, The Folger Shakespeare Library, and The Baker Street Irregulars.



## No radio? No problem!

Find us on Facebook, Twitter and at [wpr.org](http://wpr.org).



ASK AT THE BOX OFFICE ABOUT OUR ASSISTED-LISTENING DEVICES, SPECIAL SEATING FOR THOSE WITH MOBILITY IMPAIRMENTS, ASL-INTERPRETED PERFORMANCES AND VISUAL DESCRIPTION FOR THE SIGHT-IMPAIRED.

# Leading Ladies

by Ken Ludwig

Director	Jaclyn June Johnson
Rehearsal Stage Manager	Rivka Kelly
Assistant Stage Manager	Sara Hueser
Performance Stage Manager	Jodi Rushing
Scenic Designer	Justin Hooper
Lighting Designer	Paul Epton
Costume Designer	Kim Murphy
Costume Assistant	Maria Cina
Wig Stylist	Jodi Rushing
Sound Designer	Brandt Roberts
Sound Engineer	Kelsey Heathcote
Props Designers	Stela Burdt, Jeremy van Meter
Choreographer	Betti Battocletti
Fight Choreographer/Intimacy Coordinator	Jeremy van Meter

## CAST

Meg	Lizzy Andretta
Leo/"Maxine"	Tim Sailer
Jack/"Stephanie"	Josiah Laubenstein
Audrey	Grace Cummings
Duncan	John B. Nicol
Florence	Sandy Webb
Doc	David Hennessey/Hal Cropp
Frank/Butch	Tanner Sabol

## Setting

York, Pennsylvania, 1958.

Runtime is approximately 2 hours, with one 15-minute intermission.

Ken Ludwig's LEADING LADIES is presented by arrangement with Concord Theatricals on behalf of Samuel French, Inc.  
[www.concordtheatricals.com](http://www.concordtheatricals.com)

Originally Produced by The Cleveland Playhouse, Michael Bloom, Artistic Director, Dean Gladden, Managing Director, on September 7, 2004, and Alley Theatre, Gregory Boyd, Artistic Director, Terry Dwyer, Managing Director on October 15, 2004.

## Underwriter:

*Peterson Creative*  
PHOTOGRAPHY & DESIGN

PETERSONCREATIVEPHOTO.COM

## Media Partner:

**women**  
rehester

## SPECIAL THANKS

Theatre in the Round Players, Andrew Saboe, Louann Hamann, Anita Brown, St. Croix Festival Theatre, UW-River Falls Theater Department, St. Mary's University Theater Department.

## ALSO FEATURING

**Betti Battocletti** (Choreographer) has performed at the Commonweal in roles that include Christmas Present in *A Christmas Carol*, Vera in *Sanders Family Christmas*, Mary in *On the Verge*, Virginia in *The Clean House*, Rona in *The 25th Annual Putnam County Spelling Bee*, and Clairee in *Steel Magnolias*. Other favorite credits include *Always...Patsy Cline*, *The World Goes Round* and *Urinetown* at The Jungle Theater in Mpls; *42nd Street*, *Prisoner of Second Avenue*, and as Cassie in *A Chorus Line* at Artistry. She is also a lyricist, playwright, choreographer and owns Bodiology Pilates in Minnetonka, MN.

**Paul Epton** (Lighting Designer) returns to Commonweal for a 7th time, having most recently lit *Come Back*, *Dancing Lessons*, *Sanders Family Christmas*, and *Silent Sky*. He started designing lights at Carleton College, spent 11 years in Detroit, Michigan, and returned to Minnesota in 1992. He's designed for the Six Points Theater, Mixed Blood Theatre, Jon Hassler Theater, and Paul Bunyan Playhouse. A year-round bicyclist, one of his early designs was for Spokesong. Awards: Lighting Designer, Ivey Award Honoree: *Ruined*. Lighting Designer, Ivey Award Honoree: *Psst!*. Detroit Free Press Theatre Excellence Award—Design. Detroit News Drama Critics Award—Theatre Craft.

**Justin Hooper** (Scenic Designer) holds a B.A. in Theatre from Augsburg College. He began his professional career as a stage manager for Glimmerglass Opera in Cooperstown, NY. He returned to Minneapolis to become a scenic artist for the Guthrie. Later, he took side-gigs as History Theater's technical director, Pioneer Place's production manager, and AV technician for AVEX. He has designed scenery and lighting for myriad Twin Cities companies and has branched into the world of interior design—his portfolio includes two restaurants, a liquor store, and a brew pub. He is currently the technical director for Concordia University's Theatre Department in St. Paul.

**Kimberly K. Murphy** (Costume Designer) is excited to join Commonweal this season as costume designer for *Leading Ladies*. Kim has been a costume designer for St. Croix Festival Theatre since 2000. She and her husband James Shoop live and work in St. Croix Falls, WI, where they cultivate their creativity and have raised two beautiful children, Gabriel and Sienna. Kim received B.S. in Apparel Design from the University of Wisconsin, Madison and A.A.S. in Fashion Design from the Fashion Institute of Technology, NYC. With both kids in college Kim is looking forward to new opportunities and cherishes the support of family and friends.



**Sandy Webb** (Florence) Since moving to Lanesboro in 2010, Sandy has acted in many Lanesboro Community Theater productions, most recently *The Dixie Swim Club*. Her favorite roles include the Bird Woman in *Mary Poppins*, and Mom in *Leaving Iowa*. Also, collaborating with local talent to stage *Over the Back Fence* was just plain joy. She loves watching and being part of a theater family that comes together to tell a story. She is delighted to join the Commonweal family for this production. Kudos to the Commonweal for challenging hearts and minds and for celebrating being human.

## NOTES FROM THE DIRECTOR

An absolute locomotive of a show, *Leading Ladies* is all about setting up the dominos and watching them fall into hilarity. It's a blast! But at the heart of comedy is sincerity. Yes, there are vibrant, dynamic characters with important—if bizarre—objectives to achieve, but they each have their hearts full of real needs and wants. Like all of us.

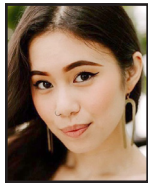
At the beginning we meet Meg, who loves theatre more than anything in the world. (I hope you can relate!) Next, we have two down-on-their-luck actors trying to make a living by performing for rural audiences. This world is also full of family bonds, caring community members, and young people falling in and out of love. The core of what makes this zany comedy so much fun? Some very relatable people who get swept up into some very silly shenanigans.

Also, Ken Ludwig has added a backdrop of Shakespearean themes: disguises, playing with gender roles, impending weddings, unrequited love, and beautiful language. He's given us a recipe for an extravagant comedic wedding cake that is as fun to make as it is to eat. Bon appétit!

—Jaclyn June Johnson

# APPRENTICE CLASS OF 2023

Happily, Commonweal has resumed our Apprenticeship Program this year. This 10-12-month, fully immersive, live-work program affords unique opportunities for young theatre professionals to study the craft & business of making live theatre. Learn more on our [website](#).



**MARIA CINA** is overflowing with gratitude for the opportunity to work with and learn from such a fantastic family of artists. She is honored to be a part of Commonweal Theatre's Apprenticeship class and hopes you enjoy the show! Maria earned her A.A. in Commercial Photography from Madison College (WI) and her Acting Certificate from The Gaiety School of Acting in Dublin, Ireland. She is currently on hiatus from studying Theatre Arts and Communication Studies at the U/MN Twin Cities, with plans to resume post-apprenticeship. Credits include Morticia Addams in *The Addams Family Musical*, Kendra in *The Gulf*, Asst. Stage Manager for *Romeo and Juliet*, and U/S Marnie for *Lewiston/Clarkston*. When not on stage, Maria can be found sipping tea and cuddling her cat, Knives Meow, in a sunny corner of the apartment, a fantasy novel close by. She sends love, hugs, and pinky promises to all her friends and family. instagram: @mariashe\_



**GRACE CUMMINGS** has been acting and performing for almost a decade. She started in Monroe, LA, at Strauss Youth Academy for the Arts. Then she moved to Natchitoches to join Northwestern State U's Theatre & Dance program, and to participate in the LA Scholars' College. Her philosophy as an artist is simple: art is about connection. No matter if she is writing, acting, singing, or painting, she aims to use her art to connect with those around her. Her one goal onstage is to tell a story that will not only connect her with her audience, but also with herself. Some roles include Elizabeth Proctor in *The Crucible*, Olivia in *Twelfth Night*, Prospero in *The Tempest*, and Deb in *Ordinary Days*. She was also able to debut two original roles, one written by the award-winning Del Shores, in *In Memoriam of Lena* as Julia, and one written by herself, in *Emilia* as Emilia Bassano. This Louisiana girl is excited to be joining Commonweal as an apprentice while getting to make new friendships and explore Minnesota!

**SARA HUESER** serves as the technical Apprentice for the 2023 season. Favorite credits include *The Wild Party*, *My Way*, and *The Other Place*. She has spent many seasons in Savannah, GA, and Greenville, SC, working on shows. Originally from Pennsylvania, Sara holds a bachelor's in Computer Engineering and a B.F.A. in Dramatic Writing from Savannah College of Art and Design.



**JOHN B. NICOL** is incredibly excited to be returning to the theatre scene as an acting apprentice with the Commonweal. Born and raised in community theatres around Northeastern IA, he went on to receive his B.S. in Theatre Arts from MN State Mankato. While there he had the opportunity to play some fun roles including Matt Friedman in *Talley's Folly*, and Smeo in *Peter and the Starcatcher*. In regional theatres, he had fun playing Willard Hewitt in *Footloose* at the Paul Bunyan Playhouse and Demetrius in *A Midsummer Night's Dream* with Free to the People Theatre.



**TANNER SABOL** is thrilled to join the Commonweal Theatre for the first time! Growing up in Sioux Falls, SD, and graduating with a B.F.A. in musical theatre from the U. of North Dakota, he initially began acting in high school, being a part of the Oral Interpretation team all four years. Since then, he has played roles such as Felix in *The Odd Couple*, Sweeney in *Sweeney Todd*, Richard Hannay in *The 39 Steps*, and was also a performer in the American College Theatre Festival's 2020 Cabaret. He hopes to find another home away from home at the CTC!



**ALEX SCHLESINGER** is ecstatic to be making their professional acting debut on the Commonweal Theatre's stage. Alex graduated from Luther College in 2021 with a B.A. in Theatre, and they are delighted to join the Commonweal's apprentice class this year. Favorite roles include Riff Raff in *The Rocky Horror Show*, Florizell in *The Winter's Tale*, and Amos Hart in *Chicago*. Alex would like to thank their mentor, professor, and good friend Jeff Dintaman for his years of support and sharing of knowledge that got Alex to where they are today.

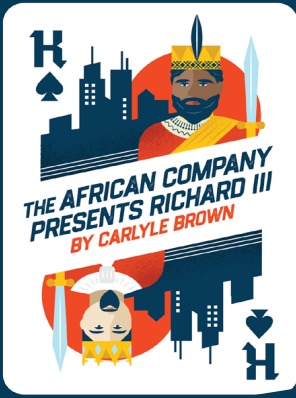
*Come enrich your world with song!*



*Now Planning our 2022 - 2023  
Season! More info at  
[www.ChoralArtsEnsemble.org](http://www.ChoralArtsEnsemble.org)*

**2022 SEASON**  
**JUN 18-JUL 31**

**GREAT RIVER  
SHAKESPEARE  
FESTIVAL**  
WINONA, MN



**TICKETS: [GRSF.ORG](http://GRSF.ORG) | 507.474.7900**

2022 Season Artwork by Maggie Panetta @maggie\_designss





LANESBORO ARTS



**Galleries**  
year-round exhibitions

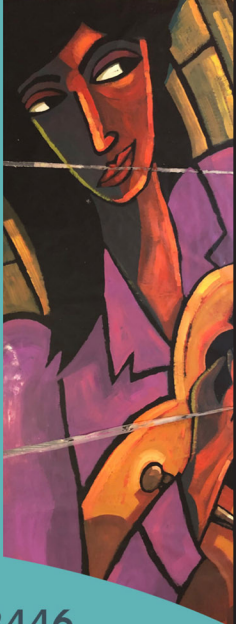
**Rhythms on the Root**  
outdoor summer music

**Art in the Park**  
Saturday, June 18, 2022

**Arts Campus**  
public art & education

**St. Mane Theatre**  
music, theater, dance, and more

[lanesboroarts.org](http://lanesboroarts.org) // 507-467-2446



# We Can't Do This Without You

## For 34 Seasons

the Commonwealth has been inspiring hearts, minds and souls. It would be easy to believe that these marvelous stories have come about because of the hundreds of talented artists who have called the Commonwealth home.

Easy, but far from the truth. The real heroes who make up this company are you, our audience and loyal supporters.

But your tickets only cover half of what it costs to create live, professional theater. For us to continue bringing theater magic to you and future generations, please consider a gift in support of our mission "to enrich the common good."



## Here's How You Can Help:

### MDC

*"When the MDC was initiated, we immediately joined. This level of giving helps ensure a solid financial base for the organization to meet their annual expenses while planning for the future. We encourage you to join us in supporting the Commonwealth, so we all can continue to enjoy the wonderful productions we have come to treasure."*

—Jon & Mary Hart

The heart of our giving programs, the **MDC** consists of individuals and households who make a non-binding, 10-year commitment of support. For a schedule of amounts and benefits, please see any staff member or visit the "donate" page on our website: [www.commonwealththeatre.org](http://www.commonwealththeatre.org)

### Planned Giving



*"By including Commonwealth in our estate plan, we feel good knowing that we'll be helping to ensure that this gem will be here for future generations."*

—Ken & Sally Mogren,  
Winona, MN

Please consider remembering the Commonwealth Theatre in your planned giving. Visit our website at <https://commonwealththeatre.org/support/planned-giving/> for more information.



**Any** contribution you make to our lobby donation jar is deeply appreciated!

### Sponsorships & Underwriting

There are myriad ways that you can play a starring role in supporting one of our mainstage shows, or even the entire season! Through these partnerships, we can maintain a high standard of artistic excellence while providing greater access to all. Sponsorship comes with its rewards. To learn about sponsorship or underwriting opportunities, including recognition and benefits, contact **Hal Cropp** at [hal@commonwealththeatre.org](mailto:hal@commonwealththeatre.org), or (507) 467-2905 X203 or visit: [www.commonwealththeatre.org/donate/](http://www.commonwealththeatre.org/donate/)

# DONORS

THE PEOPLE WHO MAKE THE COMMONWEAL DREAM A REALITY

Here are all ongoing MDC pledges and all memorials made from **January 1, 2021, to February 15, 2022**. Due to space limitations, we cannot list all our donors here. Please find them on our website, [www.CommonwealTheatre.org](http://www.CommonwealTheatre.org). For information on all our individual donor programs, contact **Jeremy van Meter: 507-467-2905 ext.211, [jeremyvm@commonwealththeatre.org](mailto:jeremyvm@commonwealththeatre.org)**

## INSTITUTIONAL DONORS IN 2021

McKnight Foundation  
Minnesota State Arts Board

## THE MDC

Our MDC members are the lifeblood of the Commonwealth. **Members donate annually** through their long-term pledges and receive unlimited admission, priority seating and more. *Heartfelt thanks* to these generous people—without them, we would not be here!

### \$2,000+ per year

Fastenal Company  
F&M Community Bank  
Bob Kierlin & Mary Burchrictor

### \$1,000 - \$1,999 per year

David & Candace Arp  
Bruce & Pauline Bailey  
David Bange  
Stephen & Martha Bartenhagen  
Kenneth Baumhman & Leandra Sunseri  
Sheri Borcherding  
in memory of Jack Michael Bostwick & Connie Williams  
Merri Bremer & Scott Koon  
Michael & Char Brown  
Dan Christianson  
Hal Cropp & Adrienne Sweeney  
Jon & Chris DeVries  
Phil & Heidi Dybing+  
Ron & Rae Evenson  
Laura & George Fix  
Michael & Elaine Edwards  
% Habberstad House  
Bed & Breakfast  
Jon & Mary Hart  
Carol Heyl  
Willa & Dave Holger  
Craig & Tracy Hurley  
Barbara Jackman  
Robert & Renee Jacobson  
Bill & Lisa Kelly  
Lou & Maureen Guillou  
David & Gail Judisch  
Mark & Kris Litzow  
Lee & Ione Loerch  
Merchants Bank  
Eric & Andrea Miehlisch

Chris Miller & Hank Taxis  
Gail & Phillip Minerich  
Ken and Sally Mogren+  
John & Lynne Munter  
Kurt Neuenfeld & David Watson  
Ted Olson  
Scott & Angie Taylor %  
Pedal Pushers Café  
Rob & Patty Porter  
Kent & Juanita Ruby  
Charles Ruen  
David & Joan Ruen  
Richard Rundle  
Dale & Sue Scobie  
Jim Sheeley  
Julie & David Warner  
Christopher & Nina Wendt

### \$500 - \$999 per year

Barb Soma  
% Amish Experience  
Alan Bailey  
Duane & Angel Bakke  
Barb & Larry Berge  
Michael Bigelow Dixon  
Scott & Karen Bingham %  
Thrivent Financial  
David Boen  
Terry & Renae Boydston  
Barb Soma % E2 Boutique  
Heide Buettner  
Joseph & Sarah Chase  
Carol & Sheldon Clay  
Bob & Alice Johnson  
David & Karen Danielson  
Linda & David Hennessey  
Leslie & Jo Hittner  
Keith & Debbie House  
Jane B. Jamison  
Kapp Kapter & Maureen Jameson  
Minette & Paul Johnson  
Susan & Lyle Klug  
Kurt & Ann Knodel  
Rayson Lorrey & Wei-Lin Jung  
Dr. Thomas & Leone Mauszycki  
Jon & Sarah Pieper % Old Village Hall Restaurant  
LeAnn & Gary Olson  
Glennice Rhodas  
Stephen & Marilyn Riederer  
Jane Ryan  
Carl Sandquist  
Kevin & Leela Scattum  
Chris & Mary Schmidt  
David & Darlene Shaw  
Daryl & Michele Thompson  
Violet Walk

### \$250 - \$499 per year

American Legion

Post #40 Lanesboro  
Blake & Beth Abdella  
Mimi Abel  
Zoe Abrahamson  
Laura Adamson  
Janey Afseth & Dwight Scrabbeck  
Shirley & Mark Ahlquist  
Jane Ahlstrom  
Bari & Peter Amadio  
Drs. John Boeker & Dory Gardner %  
Amethyst Dental Care  
Harold & Angie Amsbaugh  
Horace J. & Rose Andersen  
Mary Anne Anderson & June Kazeil  
Asahi Loft of Harmony  
Charles & Vonnice Aug  
Jerry & JoAnn Aulwes  
David & Lori Bakke %  
Granny's Liquor  
Russell & Cathryn Baldner  
Joe & Sue Banken  
Diane & David Banner  
Carolyn & Roger Barsness  
Dave Beal & Carol Berteotti  
Becky Becker  
Kathryn & Brad Benke  
Harvey Benson & Bonita Underbakke  
Judi & Dick Bergen  
Gene & Renee Bergstrom  
Andrew & Anita Bisek  
JoEllen & Dean Blegen  
Michaelaen Bonner & Scott Gottfried  
Donald & Pat Borcherding  
Craig & Nina Bren  
Ann Brice & Bill Haviland  
Kathryn Burch  
Stela Burdt  
William & Diane Burdt  
Philip Burkholder  
Jim, Kathy, Aaron & Colin Buzzza  
CRW architecture + design group  
Charlotte & James Carey  
David & Brenda Carlson  
Paul & Bridget Carns  
Elaine Case & Bill Wiktor  
John & Sandra Castek  
David Cavagnaro  
Ron & Nancy Christensen  
John & Birgitte Christianson  
Dr. Keith & Kathy Churchill  
John & Jane Ciecko  
George Cipov  
Margaret & Neil Claus  
Glee & Gordon Claussen  
Gerald Clymer & Ardy Olds  
Richard & JoAnn Cole

Debra Collum  
Duane & Sonja Cook  
Jim & Pat Cooper  
Jeff & Lavon Court  
Carlo Cuesta & Dana Gillespie  
Jerry & Dottie Dallmann  
Larry & Betty Danielson  
Norman & Janetee Decker  
Joe Deden & Mary Bell  
Bob Ditsch  
Allen & Marcia Dollerschell  
David Drury  
Joseph & Lois Duffy  
Carol & Marv Eggert  
Henry & Carol Elwood  
Hisako Y. and Dale Eppen  
Herb Erickson & Helen Kolb  
Pastors Kerry Eversole & Cindy Cordes-Eversole  
Phil & Barbara Feiten  
Leland & Jeanne Ferden  
Carmen Fingerson  
Anne Flynn & Jon Buggs  
Dennis & Nancy Forsyth  
Ted & Cindy Frana  
Jill Frieders  
Michael Fritzsche & Anne Beighley  
Dick & Marge Fuller  
John Gaddo & Nancy North  
Tom & Lynne Gaffey  
Jim & Carla Gallina  
Shirley Gangstad  
Gary & Elaine Gassett  
William & Laura Gentry  
Bonnie Gibson & Gretchen Schade  
Bill & Sarah Goff  
Alan Goldberg & Kay Udey  
Jackie Rehm %  
Green Gables Inn  
Sandra & Joel Grettenberg  
Martha & Jim Griesheimer  
Dale & Beth Haaland  
Paul & Louanne Hamann %  
High Court Pub  
Richard & Diane Haight  
Janet & Dennis Haller  
Robyn Hansen  
Chris & Jessica Hanson  
Peggy Hanson & Frank Wright  
Bill & Eileen Harguth  
Dr. Gary & Jean Hayes  
Janice Heikes & Lee Zook  
Paul & Jessica Hemenway  
Beth Hennessy & Tom Barnes  
Marian Maciej-Hiner  
Betsy Holbrook & Dona Conway  
Marilyn Holland  
Dick & Bette Houtkooper  
Linda Hyde

## COMMONWEAL THEATRE LEGACY SOCIETY

+ Indicates members.

Please consider the Commonwealth in your estate planning.

Contact Jeremy van Meter about this or any of our donor programs: (507) 467-2905 ext.211  
[jeremyvm@commonwealththeatre.org](mailto:jeremyvm@commonwealththeatre.org)

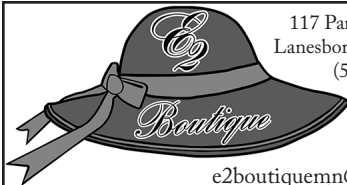
## JuliaClaire Consignment & Variety



152 Main St. • Preston • 507-765-2399

- Quality clothing for the entire family
- Fashion accessories & Jewelry
- Books, Games & Videos
- Housewares & Home Accessories

[www.facebook.com/affordableclothingprestonmn](http://www.facebook.com/affordableclothingprestonmn)



117 Parkway Ave. N.  
Lanesboro, MN 55949  
(507) 467-2994

[e2boutiquemn@gmail.com](mailto:e2boutiquemn@gmail.com)

## Oakenwald Terrace

SOUTHERN MINNESOTA'S  
PREMIER BED &  
BREAKFAST

218 Winona St.  
Chatfield, MN  
(507) 867-3806

[www.OakenwaldTerrace.com](http://www.OakenwaldTerrace.com)



## AMISH EXPERIENCE



Gift Shop featuring locally handcrafted Amish Quilts,  
Baskets & Furniture; Collectibles; Home Decor;  
Garden Accents; & Specialty Foods

visit our Online Store

[www.village-depot.com](http://www.village-depot.com)

105 Parkway Ave. N. • Lanesboro, MN 55949 • 507-467-2992



### 15 Modern Rooms

- Bridal Suite
- Fireplace & Whirlpool
- Smoke-free
- Open All Year

Hwy 16 West, Lanesboro, MN

Modern Convenience in a Quaint Country Setting

800-818-GABLES (4225) 507-467-2936

[green@acegroup.cc](mailto:green@acegroup.cc)

[www.lanesboroweb.com/greengables](http://www.lanesboroweb.com/greengables)

## HABBERSTAD HOUSE BED AND BREAKFAST



*A relaxing retreat*

[HABBERSTADHOUSE.COM](http://HABBERSTADHOUSE.COM) | 507-467-3560

## Scandinavian Inn



A Bed & Breakfast in Lanesboro

Like theater? You'll love our  
Mystery Nights! • 507-467-4500

[www.scandinavianinn.com](http://www.scandinavianinn.com)

## Health Through Chiropractic

OFFICE  
HOURS

M, T, W, F:  
9AM - 6PM

Thursday:  
Closed

River Hills  
Chiropractic



102 W. Sheridan St.  
Lanesboro, MN 55949

507-467-2629 (24-hr. call 507-450-2466)

## 507-467-8663 STONE MILL HOTEL & SUITES

Historic Lanesboro, Minnesota



[WWW.STONEMILLSUITES.COM](http://WWW.STONEMILLSUITES.COM)

1/2 block from the theatre.

A lovely drive just minutes from Lanesboro on the **National Scenic Byway** Route 16 & located beside the

**Root River**   
**State Bike Trail**

# LOKEN'S RUSHFORD INN

rushfordinn.com 507-864-2222

## Visit the VALLEY

Rushford Peterson Valley, a hidden gem in scenic bluff country with space to breathe and explore! Located 14 miles east of Lanesboro on scenic Highway 16.



### THINGS TO DO

*Experience bluff country by trail or water!*

- Root River Bike Trail: 60 miles of paved trail
- Bluff Country Scenic Byway
- Root River fishing, tubing, canoeing

### PLACES TO STAY

- Inns, campgrounds, vacation rentals

### PLACES TO EAT

- Many local favorites

### PLACES TO SHOP

- Basic necessities or items unique to the Valley



take root

Rushford Peterson Valley  
MINNESOTA

Find us online for a full list of activities and events  
[www.rushfordpetersonvalley.com](http://www.rushfordpetersonvalley.com)



We proudly support  
Commonweal Theatre!

Whatever your print needs, we have you covered. Catalogs, booklets, brochures, flyers, business cards, signs, banners, wall & floor graphics, POP displays, trade show materials and much more. We offer layout, design, digital printing, variable data, offset printing with inline coating, UV coating, full service bindery and delivery. In addition to printing, we offer complete mailing services and fulfillment.

**We are your full service printer!**

1416 Valleyhigh Drive NW Rochester, MN 55901 • 507-288-7788 or 800-298-7780 • [www.johnson-printing.com](http://www.johnson-printing.com)

## DONORS — THE PEOPLE WHO MAKE THE COMMONWEAL DREAM A REALITY

Jim & Becky Iverson  
Troy & Jenna Iverson  
Michele & Robert Jersak  
Buster & Annette Johnson  
Jerry & Patti Johnson  
Linda G. Johnson  
Tory & Julie Johnson  
Karst Brewing  
Mary and Ron Kaser  
Janelle Kelleher  
Norb & Nancy Kelly  
Ed & Ann Keuper  
Annette & Richard Kiehne  
Julie & Tim Kiehne  
Ross Kiehne  
Sharyn & Bill Kiehne  
Fred Kiel %

Sacred Clay Inn  
Jay & Patricia Kim  
Karl & Patricia Knutson  
Robert & Sharon Knutson  
Marlene & Robert Kohner  
Ron & Nancy Kreinbring  
Gordy & Marsha Kuehne  
Rachel Kuhnle &

Josiah Laubenstein  
Susan & Ron Kurth  
Dick & Mary Ellen

Landwehr  
Martha & John Langowski  
Carolyn Larson  
Reginald & Jerilyn Laursen  
Richard & Penny Leake  
Connie & Glenn Leckband  
Karen A. Lischer

Marcia & Bob Love  
Ron & Shaune Luck  
Susan & Lyle Luzum  
John & Sandra MacLaughlin  
Kathy MacLaughlin &

Mike Augustin  
David & Ruth Marshall  
Matt Marshall  
Ramon G. Martin  
Nancy Martinson &  
Jeff Kamm

Wendy & Mark Mattison  
Frank Mcanulty &  
Hertha Lange  
Roger & Lynn Meyer  
Gary & Sharon Miller  
Robert Milligan &  
Sharon Danes  
Wanda & Craig Mitchell  
Martin & Mary Lou Mohr  
Terry Morrison  
Greg Murphy &  
Jean Daywitt

Kay Nelson & Jim Parker  
Elise Nelson  
Harland Nelson  
Linda Nelson &  
Mike Larsen

Dick & Joan Niemiec  
Terry & Karen Neneman  
André & Madeline Novack  
Frieda & Ron Nowland  
Gary & LeAnn Olson  
Kenneth & Sharon Olson  
Jim & Ruth Ostrem

Dennis & Joan Paulson  
David & Becky Pederson  
Drew & Cheryl Pellett  
Robert & Phyllis Penheiter  
Ann & Noel Peterson  
Sarah Peterson %

Peterson Creative  
Photography & Design  
Jim & June Reineke  
David Reichert &

Jeanne Thoreson  
Pat & Joe Reymann  
Jarrett & Linda Richardson  
Terry Rindfleisch &  
Linda Hirsh  
Renata Rislow  
Steven & Pam Ristau  
José Rivas  
Janis Rockabrand &  
Jim Wolfe  
Kristie & Paul Roeder  
David & Joy Roslien

Craig Ross  
Edward & Katie Ruen  
Dave & Nancy Runningen  
Jimmy Schwichtenberg %  
S & A Petroleum, Inc.  
Peter & Vicki Torkelson %  
Scandinavian Inn  
Mary Schaller  
Bruce & Kathy Schott  
Matt & Stacey Schultz  
Matthew & Lisa Schutt  
Jessica Schwiwr  
Kay Shaw

Tom & Marcy Sherwood  
Linda Sifford & Tom Sautter  
Marilyn Silver in memory of  
Howard Silver

Brian & Betty Singer-Towns  
Kent Simmonds &  
Lynne Sootheran  
Kathleen & Delbert Smith  
Jeanette Sobania &  
Pam Nelms

Eugene & Sandra Somdahl  
Jim Spencer &  
Michele Valletta  
Charlie & Ann Sparks  
Michele & Rick Speltz

Byron Stadsfold  
Kim & Caren Stelson  
Rick & Cheryl Lamom %  
Stone Mill Hotel & Suites  
Jack & Kay Strobel  
Glenn & Pat Tabor

Linda Tacke  
Edward Taylor  
Dave & Marti Gray %  
James A. Thompson  
House

Cindy Beech &  
P. J. Thompson  
Diane & Bill Tisue  
Richard & Jeanne Toews  
Stephen & Julie Troutman  
Margaret Vagts  
Jeremy van Meter

Rick Walters & Sanna Yoder  
Joyce Walker  
Sandy Webb  
Bette & David Weinmann  
Jim & Mary Wilder  
Kay Wold  
Richard & Louise  
Wolfram  
Tom Woxland &  
Carol Birkland  
David & Jeanne Wright  
Joel & Julie Young

**\$150-\$250 per year**  
(Single MDC Level)

Karen Acker  
Constance Arneson  
Jim Boeding  
Terry & Renae Boydston  
Bertha Boyum  
Joanne Broady  
Ingrid Callaghan  
Naomi Craft  
Elizabeth Doty  
Elizabeth Dunn  
Jean Ellingson  
Claire Ennis  
Ruth Fjelstad  
Elizabeth & James Fritz  
Sherry Gribble  
Kathie & LeRoy Haynes  
Doris Heikes  
Jenine E. Jordahl  
James Kunz  
Philip Muehe  
Gary Olson  
Patty Peterson  
Brandt Roberts  
Barbara Ruhter  
Bev Spande  
Stephen Strickler  
Brett Winter  
Jane Wolfram

## COMMONWEAL BOARD OF DIRECTORS

Alan Bailey, David Boen, Dan Christiansen, Laura Gentry, Chris Hanson, Wendy Mattison, Ken Mogren, Sarah Peterson, José Rivas, Joan Ruen.

### **I Ought to Be in Pictures**

by Neil Simon | APR-JUL

### **Leading Ladies**

by Ken Ludwig | MAY-AUG

### **The Mystery of Edwin Drood**

by Rupert Holmes | JUL-OCT

### **Good People**

by David Lindsay-Abaire | SEP-NOV

### **Alice in Winter Wonderland**

by Janet Allard & Michael Bigelow Dixon | NOV-DEC



See them all  
with a Season  
Pass for just  
**\$115!**

# CURRENT INDIVIDUAL DONORS

MORE PEOPLE WHO MAKE THE COMMONWEAL DREAM A REALITY

Listed below are all the donors, who are not MDC members, who generously contributed to the Commonwealth in 2021. To make a donation please use the "Get Involved" page on our website, or send your check to **Commonweal Theatre, P.O. Box 15, Lanesboro, MN 55949**. Be sure to write "donation" on the memo line.

Aaron Preusse	Bob & Pat Fiedler	Darlene & Anya	Elizabeth Stewart &
Aaron Silver	Bob & Sheri Erickson	Dammermann	Paul Zellwegger
Abbey Helleckson	Bob Anderson	Darlene Schober	Elizabeth Lopp
Adria Ramos	Bob Wittrock	Dave & Amanda Schutz	Elizabeth Meyer
Aimee Chastain	Bonnie Warrington	Dave & Nancy Harrison	Ellen Macdonald
Alessandra Chiareli	Brandon Zembal &	Dave Johnston	Ellen Rasmussen
Alex Schlesinger	Tanea Mahanna	David & Helen Dechaine	Emily Spende
Alison & Brad Leathers	Brenda Petersen	David & Shirley Mahoney	Eric & Gayle Bunge
Allen Kaufmann	Brent Meyer	David Arneson	Eric & Lisa Farnberg
Allison Rupp	Brett Cook	David Bellows	Eric Burdt
Allyson Evans	Brian & Kristine Lee	David Gilmore	Erica Jensrud
Alysa Mahaffay	Brian Baskett	David Pratzon	Eugene & Margaret
Amanda (Davis) Lenweaver	Briant & Betsy McMahon	David Rothstein &	Hokanson
Amanda Rafuse	Brooke Smith	Sharon Akimoto	Evelyn Schlichting
Amy & Val Cordry	Bruce & Cynthia Wulfsberg	David Susag	Fae Wilson
Amy Kotsenas	Bruce & Jan Larson	Deb & Brian Benoy	Florence Sandok
Amy McKnight	Bruce Nelson & Barb Watts	Debbie & Brad Olson	Fran Sauer
Amy Rumschlag	Bryan & Kathy Kufus	Deborah Pitzen	Fred & Ruth Kurtz
Andrea Miller	Bryan Roecker	Deborah Vosler	Fred Smith
Andy & Karen Heimdahl	Camille Burke	Debra & Douglas Dewanz	Gail Prete
Andy Stella	Candace & Gregory	Debra Holmgren	Gale Nelson
Anita Jean Hall	Carlstrom	Dee Kimmel &	Gary & Anita Wilson
Ann Brice & Bill Haviland	Carl Duyck	Jenny Kennedy	Gary & Joanne Gilbertson
Ann & Mark Thompson	Carl Lindberg	Denise, Theodore &	Gary & Nancy Hayden
Ann Baker	Carla Noack	Valerie Barthels	Gary & Sharon Johnson
Ann Ladd	Carlene & Cameron Roberts	Dennis & Carolyn Davidson	Gary & Susan Corbisier
Ann Siverling	Carol & Clif Lucido	Dennis & Marilyn	Gary Danciu
Ann Yourell & Steve Sharp	Carol Dixon	Bettenhausen	Gavin Nachtigall
Anne & Greg Yakle	Carol Overland	Dennis Magnuson	Gayle & Richard Garrity
Anne Drecktrah	Carol Taylor	Diana Percy	Gayle Waldera &
Anne Marie & David Farning	Carolyn & Tom Smith	Diane & Bill Tisue	Wayne Ledebuhr
Anne Marie &	Carolyn Warner	Diane & Duane Lambrecht	Gene & Sandra Dankbar
Keith Kramlinger	Catherine Marks	Diane & Jon Closson	George & Virginia Severson
Annette Evenson	Cathy & Thomas Alpizar	Diane & Norbert Lovstuen	Geri & Russ Farnsworth
Annic Miller	Chad Steinfeldt	Diane Cariveau	Gerri Nielsen
Annie Cady	Charles & Donna Briscoe	Diane Puntenney	Glencie Rhodas
Anonymous Donor	Cheryl & Bob Roediger	Dianne & Fred Schjolberg	Glenn & Leana Dixon
Arthid Brown	Cheryl Dornink	Dick Buggs	Glenn Klapperich
Arlyls & Lorado Adelmann	Cheryl Watson	Dillon Denisen & Becky Trom	Gloria Hennessey
Arlyn & Connie Picken	Chris & Anna Hanson	Don Hoehn	Gloria Schad
Art & Mary Ann Ekern	Chris & Diane Johnson	Don Quiram	Gloria Schoenknecht
Arvid & Gaylene Mortensen	Chris & Jeff White	Donald A. Nelson	Gregg & Kathy Carlsen
Avis Jensen	Chris & Kacie Mixon	Donald Stover	Gregory Dawson
Barb & Don DeCramer	Chris Suby	Donna Scheck	Harald & Ann Lohn
Barb Burchill	Christiana Lundholm	Doris McFarlane	Harlan & Sonja Satrom
Barb Piper	Christine Mattison	Dorothy & Jerry Denisen	Harlan Nelson
Barbara & Joel Mielke	Christopher & Suzanne Colby	Dorothy Coons	Harriet Lawston
Barbara & Paul Klaas	Christopher Brauckman	Dorothy Evenson	Heather Tesoriero
Barbara Beck	Christopher Gerson	Doug & Diana Lawrence	Heidi & Eric Becker
Barbara Beeman	Chuck & Mary Phillips	Doug Schommer	Heidi & Larry Chladek
Barbara Knutsen	Cindy & Gage Andretta	Douglas Croucher	Heidi Ricks
Barbara Mahr	Cindy Weber	Douglas Tice	Helen Larson
Barbara Wright-Quarton	Claire Knocke	Drue Fergisn &	Helene Zinberg
Barton & Pam Seebach	Claire Seitzinger	Ralph Zerbe	Houston Dental
Bebe & Pete Keith	Connie Edwards	Dustin & Dominique Luecke	Howie Tobak
Ben & Mary Byker	Connie Minnick	Earl Hammell &	Ilene Edwards
Ben Gorman	Cory & Rachel Poncelet	Kris Anderson	Irene & Fred Green
Benjamin O'Konski	Craig Johnson	Ed & Barb Armbruster	Isabel Kramlinger
Benjamin Vander Kooi, Jr.	Curt & Beverly Proud	Ed Pfannkoch	Jack Uldrich
Beth & Rue Riley	Cynthia Fahser	Edith & Larry Langsev	Jackie & Tedd Johnson
Beth Hahne	Cynthia Halleen	Edward & Karel Moersfelder	Jackie Remery-Pearson
Beth Richardson	Cynthia Huggenvik	Edward LeVieux	Jackie Wolter Luna
Bethany & Robin Krom	Dale & Sonya Nimrod	Eileen Kuhnle	Jacklyn Johnson &
Bethany Werner	Dan & Jayme Nelson	Elaine Allen &	Jonathan Levine
Betty & Gary Pedersen	Dan & Maureen Anderson	Bryan Kingsriter	Jacqueline Kartman
Betty Bergsgaard	Dan & Vicki Anderson	Elaine & Harold Welda	James & Alice Leidel
Bill Knott	Dana Huschle & Reva Parker	Elaine & Robert Kirk	James & Nancy Reynolds
Blake & Caleb	Daniel & Brenda Rooney	Eliott Rustad	Jan & Gerald Nelson
Lauritsen-Norby	Daniel Stock & Megan Pence	Elise Gregory	Jane & Clifton Grevstad
Bob & Marilyn Larson	Daniel LaRocque	Elizabeth & James Fritz	Jane & Dennis Timmerman

## DONORS — MORE PEOPLE WHO MAKE THE COMMONWEAL DREAM A REALITY

Jane Nelson  
 Jane Peck  
 Janet & Bob Calander  
 Janet & John Johnson  
 Janet & Tom Munger  
 Janet Brauckman  
 Janis & Rodney Tanner  
 Jay Heiken  
 Jay Hesley  
 Jay Kobriger  
 Jean Allen  
 Jean Selle  
 Jeanne & David Cornish  
 Jeanne & Jon Logelin  
 Jeff & Dawn Thompson  
 Jeff & Ollie Lepper  
 Jeff Daood  
 Jeff Ruehle  
 Jeffrey & Angela Raddatz  
 Jeffrey & Sara Staab  
 Jeffrey Hatcher  
 Jeffrey Bernardy  
 Jenni Taggart  
 Jennifer & Scott Wagner  
 Jennifer Paloma Rafferty  
 Jennifer Ryg  
 Jerald & Terry Lichte-Molnar  
 Jeremy DeGier  
 Jeremy Lane  
 Jeri Sebo  
 Jerry & Su Ritter  
 Jesse Labonne  
 Jessica Michalski  
 Jill Sicheneder  
 Jillian Peltzman  
 Jim & Dee Buchholz  
 Jim & Elaine McNeil  
 Jim & Monique Howe  
 Jim & Sherry Oeltjenbruns  
 Jo Marie Thompson &  
 Robert Larson  
 Jo Seton & Brad Wronski  
 Joan Anderson  
 Joan Laubenstein  
 JoAnn & George Topness  
 Joanne Broady  
 Jody & Jay Myers  
 Joe & Sheila Goetzke  
 Joel & Brooke Pfeffer  
 Joel & Kathryn Anderson  
 John & Arlene Nelson  
 John & Debbie Orenstein  
 John & Karen Kristoff  
 John & Kelly Vriezen  
 John & Mary Wiater  
 John & Rose Pederson  
 John & Susan Eddy  
 John Beatty  
 John Bening  
 John Dunleavy  
 John Molseed  
 Jolene Beddow  
 Jon Anderson  
 Jon Peterson  
 Joseph & Joan Francois  
 Joseph Gray  
 Joseph Kalaidis  
 Josiah Robinson  
 Josie Papenfuss  
 Joyce & Dennis Beekman  
 Joyce & Drew Meyer  
 Joyce Duede  
 Joyce Pelnar  
 Judith Bronson  
 Judy & David Jacobson  
 Judy & Dwight Boyum

Judy Nelson  
 Judy Trousdell  
 Judy Wilder  
 Julee Caspers Agar  
 Julie & David Aanes  
 Julie & Kevin Sutter  
 Julie & Roger Deets  
 Julie Aldrich  
 June Torrison  
 Karen Buggs  
 Karen Greenslade  
 Karen Heistand  
 Karen L. Allen  
 Karen Olson  
 Kate Barr  
 Kate Lamb  
 Kate Martinson  
 Kathleen Abrahamson  
 Kathleen Lindblad  
 Kathleen Quinn  
 Kathryn & Stephen Struck  
 Kathryn & Tom Rynders  
 Kathy & Eric Thiss  
 Kathy & Gary Huschle  
 Kathy & Steve Delano  
 Kathy & Tim Geisler  
 Kathy Schoonhoven  
 Katie Stodd Knapp  
 Kay & George Spangler  
 Kay Robinson  
 Keith & Deborah House  
 Keith & Jo Anne Agrimson  
 Keith & Laney Lindor  
 Keith & Natalee Johnson  
 Kelli Venzke  
 Ken & Gail Bittner  
 Ken & Karen Bittner  
 Ken Kidd  
 Ken Nichols & Sharon Wonsil  
 Kendra Weber  
 Kent & Barbara Nelson  
 Kent & Cindy Hofer  
 Kent & Janice Johnson  
 Kent & Karen Bonte  
 Kent Swan  
 Kevin Brinkmann  
 Kevin Drake  
 Kevin O'Brien  
 Kim & Jean Pierre Menard  
 Kimberly Hoffmann  
 Kirby Bennett &  
 Phil Losacker  
 Kirsten Welge  
 Krist Johnson  
 Kristen Jacobs-Andresen  
 Kristin Musselman  
 Kristine & Michael Larson  
 Kristine Claussen  
 Kyle Swanson  
 Larry Iverson  
 Laura & Duane Hookom  
 Laura & Kevin Horihan  
 Laura Demuth  
 Laura Tills  
 Lauriee Kneeskern  
 Laurie & Joel Kramer  
 Laurie Bryant  
 Laurie Everitt  
 Lawrence Kerzner  
 LeAnn Bollum  
 Leanna Rubin  
 Lee Gundersheimer  
 Leslie & Kevin Sand  
 Leslie Levine  
 Lester & Dianne Dunn  
 Letitia & Glen Kopperud

Liane Henkell  
 Lilly & Mark Jensen  
 Linda & Bradley Quarderer  
 Linda & Dave Harvey  
 Linda Curtis  
 Linda Long  
 Linda Watson  
 Linnea & Tom Nicol  
 Linnea Sodergren  
 Lisa & Bret Klaehn  
 Lisa & John Conzemius  
 Lisa Pearson  
 Liz Curran  
 Lizzy Andretta  
 Lois & Clarence Shub  
 Lois Peterson  
 Loren Baldus  
 Lori Sims  
 Lorraine Borowski  
 Louanne O'Brien  
 LouAnne Stabb  
 Luann Wilcox  
 Lynelle Osgood  
 Lynn Krapf  
 Lynn Lanners  
 Lynne & Willard Jacobson  
 Lynne Kirklin  
 M. Robert Ayerhart  
 Marcy & Tom Sherwood  
 Maren Zincke  
 Margaret Lambert  
 Margaret Petersen  
 Marianne & Harro Hohenner  
 Marilyn & Ron Reis  
 Marilyn Harstad  
 Marilyn Schwab  
 Mark Muggli &  
 Carol Gilbertson  
 Mark & Claire Dunn  
 Mark & Gay Herzberg  
 Mark & Ivy Pillers  
 Mark & Jeanne Olson  
 Mark & Kelly Baer  
 Mark Dannenberg  
 Mark Diez  
 Mark Hamann  
 Mark Miedtke  
 Mark Nelson  
 Mark Sampson  
 Mark Schreiter  
 Mark Weiers  
 Marlene Michel  
 Martha Baird  
 Marty Schuster  
 Marvin Grant &  
 Carolyn Hensrud  
 Mary Evans  
 Mary Finnerty  
 Mary Frantz  
 Mary Hoffman  
 Mary Jo Ellingson  
 Mary Lee Eischen &  
 Bob Stuber  
 Mary Lillestol  
 Mary Sack  
 Mary Waudby  
 Mary West  
 Matthew & Karen Quanrud  
 Maureen Johnson  
 Meellee Fish  
 Megan Hanks  
 Melina Cohen  
 Melonie Carstensen  
 Merritt Olsen  
 Michael & Kim Farber  
 Michael & Moira Majerle

Michael & Trudy Kamper  
 Michael Austin  
 Michael Bowler  
 Michael Clemens  
 Michael Hill  
 Michelle & Matthew  
 Moersfelder  
 Michelle Barness  
 Michelle Cochran  
 Mike & Meg Hennessey  
 Mike Lynn  
 Mikey Cohen  
 Mollie & John Theel  
 Mullen Dowdal  
 Muriel & Jim Pemble  
 Nancy & Michael Stanek  
 Nancy Brubaker  
 Nancy Movall  
 Nancy O'Reilly  
 Nancy Toensing  
 Naomi Craft  
 Nathan & Denise Davidson  
 Nathan Dungan &  
 Susan Hawks  
 Nathan Laubenstein &  
 Heather Hanft  
 Nathan Semsch  
 Nathaniel Barmore  
 Neal & Marie Buethe  
 Nicole Pearson  
 Nile & Jay Fellows  
 Norah Bringer  
 Norma Budzinski  
 Owen Ziemer  
 Pam Kopriwa-Barnes  
 Pamela Flattum  
 Pat & Joan Quinn  
 Pat & Mark Anderson  
 Pat Hinkie  
 Pat Johnson  
 Patricia & James McIntosh  
 Patricia Carlberg  
 Patricia Sample  
 Patrick & Linda Smith  
 Patti & Jerry Johnson  
 Patty & Lu Paulson  
 Patty Connelly  
 Paul & Sue Anderson  
 Paul Batalden  
 Paul K. Schulte  
 Paul Kiehne  
 Paul Laplante  
 Paul Stevens  
 Paula Craig & John Lieske  
 Pauline Christensen  
 Peggy Hanson &  
 Frank Wright  
 Peter & Lisa Bakken  
 Peter & Nancy Breyfogle  
 Peter Borg  
 Peter Moore  
 Peter Seed  
 Phil & Pam Iasevoli  
 Phil Albu  
 Phil Strom  
 Preston & Connie Hollister  
 Rachel Tichy  
 Randy & Linda Prudoehl  
 Randy & Sheryl Chapman  
 Randy Schenkat  
 Raymond & Judy Auger  
 Rebecca Benson  
 Reggie Shones  
 Rev. Betsy Dartt  
 Rich Brunner  
 Rich Kasacek



Richard & Carol Eick  
 Richard & Nancy Blum  
 Richard Dietman  
 Richard Gozias &  
 Elizabeth Holloway  
 Richard Kaiser  
 Rita Haugh  
 Robert & Bonnie Flom  
 Robert & Linda Railey  
 Robert & Lois Buntz  
 Robert Angelici  
 Robert Gaines  
 Robert Gardner  
 Robert Geraghty  
 Robert Lawson  
 Robert Todd  
 Roberta & Marvin Bringe  
 Roberta Peterson  
 Roger & Carolyn Greenlaw  
 Roger & Denise Ring  
 Roger & Emily Smith  
 Roger & Joyce Peckover  
 Roger Hegland  
 Romi & Mark Wilhelm  
 Ron Clark  
 Ronald & Kathy Jensen  
 Rose Johnson  
 Rose Olmsted  
 Rosemary Broughton  
 Rosie Thacher  
 Ruth & Phil Abrahamson  
 Ryan & Sara Kling-Punt  
 Sally & Morgan Ming  
 Sally Novak  
 Sandi Serdahl

Sandy Kiel  
 Sara & Stephen Galligan  
 Sara Pecor  
 Sara Templin  
 Sara Xavier  
 Sarah Crane  
 Scott & Elyse Hawthorne  
 Scott Roser &  
 Lyubov Slashcheva  
 Scott & Sarah Sailer  
 Scott Holtz  
 Scott Weber  
 Sean McCauley  
 Seth Jovaag  
 Seth Kaltwasser  
 Shannon Mastel  
 Shari Chamberlain  
 Sharon Price  
 Sharry Hebert  
 Sheila & Steve Arnold  
 Shelly Billiet  
 Sherry & Marc Nichols  
 Shirley & Rod Miller  
 Shreyasee Amin  
 Sonja Cook  
 Sonja Sola  
 Stan Peal & Laura Depta  
 Stan & Sharlene Milewsky  
 Stan Stern  
 Stef O'Keefe  
 Stephen & Cindy  
 Peterson-Wlonski  
 Stephen Carmichael &  
 Susan Stoddard  
 Stephen Houtz

Steve & Marlene Maloney  
 Steve Stricker  
 Steven & Jody Skolnick  
 Steven & Mary Jo Tittl  
 Steven & Nadeane Schossow  
 Steven & Sandra Hunt  
 Steven Brillhart  
 Steven Weekley  
 Stuart & Nikka Vrieze  
 Sue & Joe Banken  
 Sue & Tom Holst  
 Sue Carlson  
 Sue Stott  
 Susan & Bill Kling  
 Susan d'Autremont  
 Susan Scharmer  
 Suzan & Lee Gass  
 Suzanne Toce  
 Suzanne Young  
 Swen Neufeldt  
 Sydney Paredes  
 Tabitha Esbrook  
 Tamara Marks &  
 Bryn Geerdes  
 Tammy Moen  
 Ted Henry  
 Teresa Grossell  
 Terrence Sweeney  
 Terri Calvert  
 Terrisa & Bob Fisher  
 Therese Durkin  
 Thomas & Arlene Theye  
 Tim Lenartz  
 Timothy Mackey  
 Todd & Dianna Berry

Tom & Adele Greenlee  
 Tom & Elizabeth Baum  
 Tom & Joann Kujawa  
 Tom & Joann Van Meter  
 Tom & Julie Larson  
 Tom & Karen Lucy  
 Tom & Karen Vinson  
 Tom & Peg Pursell  
 Tom Cathcart & Karen Koch  
 Tom Muschler  
 Toni Carlstrom  
 Tony & Patrice  
 Vander Wielen  
 Traci Ledford  
 Tricia Baxter  
 Troy & Deann Underwood  
 Valerie Holcombe  
 VaLois Wilbur  
 Vangy & Carl Lundstrom  
 Velma Brant  
 Vern Riddle & Jennifer Wood  
 Verna Peterson  
 Vicki Donhowe  
 Virginia Aug  
 Walter & Susan Bradley  
 Warren & Donna Schimunek  
 Wayne & Joan Finnegan  
 Wayne Rendahl  
 Weldon Kuhn  
 William & Juanita McGregor  
 William & Judy Smithson  
 William & Meg Moellering  
 William Nelson

*Twelfth Night*

In *Leading Ladies*, Ken Ludwig riffs on many elements from Shakespeare's *Twelfth Night*. It includes a pair of lost siblings, unrequited love, women disguised as men (and back in Shakespeare's time, it would have been a man playing a woman who then disguises herself as a man), a deceptive love letter, and one tangled love triangle: Orsino's in love with Olivia. Olivia's in love with Cesario (who is really Viola disguised as a man) and Viola's in love with Orsino. Got it? Good!

# Peterson Creative

PHOTOGRAPHY & DESIGN

*Custom Portraits*  
DESIGNED TO FIT YOUR LIFE.



CONTACT SARAH TODAY TO SCHEDULE YOUR SESSION.

Sarah Peterson, M. Photog., Certified Professional Photographer

[WWW.PETERSONCREATIVEPHOTO.COM](http://WWW.PETERSONCREATIVEPHOTO.COM) | 507.421.9906

 [petersoncreative](https://www.instagram.com/petersoncreative)  [petersoncreative](https://www.facebook.com/petersoncreative)  [petersoncreative](https://www.pinterest.com/petersoncreative)

FAMILIES | SENIOR YEAR | REUNIONS | CHILDREN