

I Ought to Be in Pictures

by Neil
Simon



**A POIGNANT
COMEDY**

APR 7 - JUL 2

PROFESSIONAL • LIVE • THEATRE

WEATHER YOU
TRUST



KTTC 
WEATHER
AUTHORITY

Welcome Back!

We hope that you, like our company, are feeling that we're emerging from what has been a particularly trying time, and you're ready to join in the celebration of our common humanity that this year's stories illuminate. Your presence is a gift for which we say thank you from the bottoms of our hearts.

WHY A DIGITAL PROGRAM?

By offering a digital program, we hope to reduce our carbon footprint and reduce printing costs. By using less paper, we reduce our carbon footprint and give you remote access to the program from anywhere. Also, without the space limitations of print, we look forward to adding more "bonus features"—such as extra articles and photos about each show—during the season.

COVID-19 PROTOCOL UPDATE

We welcome and encourage the use of masks in our theatre. The Commonwealth, alongside its Board of Directors, will adjust protocols as conditions shift, particularly in terms of the CDC Community Level Guidelines for Fillmore County, Minnesota. The most up-to-date information is shared on our website. Thank you for your flexibility and effort in keeping our community safe.

LAND ACKNOWLEDGEMENT

We at the Commonwealth Theatre acknowledge that we work and gather on the ancestral lands of the Dakota Nation and other Indigenous peoples. We recognize these Nations as the original caretakers of this land and acknowledge the injustices committed against them. We strive to promote healing and inclusion through storytelling, which is fundamental to our mission.

We are eager to share these meaningful and entertaining stories with you. Please stay safe and healthy. And thank you for coming to the Commonwealth!



Hal Cropp
Producing Artistic Director

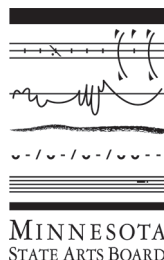


PROFESSIONAL • LIVE • THEATRE



The Commonwealth Theatre Company is a member of Minnesota Citizens for the Arts and a constituent member of Theatre Communications Group. Funding is provided in part by a grant from the Minnesota State Arts Board through an appropriation by the Minnesota State Legislature and by private funders.

208 PARKWAY AVENUE N., P.O. BOX 15
LANESBORO, MINNESOTA 55949
(800) 657-7025 • (507) 467-2525
COMMONWEALTHTHEATRE.ORG



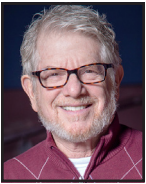
THE COMPANY



LIZZY ANDRETTA is in her sixth season at the Commonweal. She appeared in *Dancing Lessons* and *A Christmas Carol* last season and previously in *The Elephant Man*, *Putnam County Spelling Bee*, *Dracula: Prince of Blood*, *Boeing Boeing*, and *Sanders Family Christmas*, among others. Other Commonweal credits: *Root River Anthology*, *Headspace* and *A Driftless Christmas* as well as choreographing for several shows. Lizzy earned an M.F.A. in Acting from the East 15 Acting School in England and a B.S. from Skidmore College. Originally from New Jersey, she now lives in Lanesboro with her beloved cat, Henry.



STELA BURDT is grateful to celebrate her 23rd season with our Commonweal family. Past onstage work includes roles in *Souvenir*, *Woody Guthrie's American Song*, *Crimes of the Heart*, *Zombies from the Beyond*, *A Midnight Dreary*, *Harvey*, and *Man of La Mancha*. In addition to performing, Stela is a music director, sound designer, freelance vocalist, and the Commonweal's Patron Relations Manager. Currently, Stela is in the role of a lifetime as mom to Kieran. Love and Light, #TeamScottyForever.



HAL CROPP is in his 31st season, where favorite roles have been in *Come Back*, *Ghost-Writer*, *Dracula: Prince of Blood*, *Outside Mullingar*, *Sherlock Holmes: The Final Adventure*, *The Drawer Boy*, *To Kill a Mockingbird*, *Picasso at the Lapin Agile*, *A Christmas Carol*, *Groucho*, and *Talley's Folly*. Selected directing credits include *I Love To Eat*, *Headspace Theatre*, *Peter and the Starcatcher*, *Brand*, *Heartland Portrait*, *The Wild Duck*, *Measure For Measure*, *Peer Gynt*, *A Midnight Dreary*, *Enchanted April*, *Ghosts*, and *Little Shop of Horrors*. Hal holds a B.A. from Brown University, M.B.A. from Santa Clara University, and an M.F.A. from National Theater Conservatory. He was the Sally Irvine Award winner for Initiative, 2006.



Working to better our communities every day.

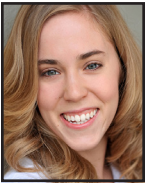
Creating thriving communities starts by helping you work toward your hopes and dreams. **Let's talk.**

(507) 467-2145 | merchantsbank.com
118 Parkway Avenue N, Lanesboro

Member FDIC

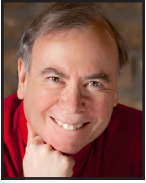


We're proud to support
the Commonweal Theatre.



ELIZABETH DUNN is in her eighth season with the Commonweal. Favorite credits include *Boeing Boeing*, *On the Verge*, *Scotland Road*, *The 25th Annual Putnam County Spelling Bee*, and *Dracula: Prince of Blood*. She has traveled in multiple tours with Prairie Fire Children's Theatre and lived in Chicago for a stint, where she studied improvisation at iO (formerly ImprovOlympic). Originally hailing from Georgia, Elizabeth is a 2010 graduate of Valdosta State University where she earned her B.F.A. in Theatre Arts.

KELSEY HEATHCOTE serves on the Commonweal's production team as the Technical Director and Assistant Production Manager. Since completing her apprenticeship in 2018, her work here has been seen onstage in several shows, including *The 25th Annual Putnam County Spelling Bee*, *Peter and the Starcatcher*, and *Bakersfield Mist*. In 2020, Kelsey designed the set, sound, and lighting for *Fully Committed* and was one of two audio engineers for *A Drifless Christmas*. She looks forward to many new and exciting challenges as we reopen our doors this year!



DAVID HENNESSEY serves on the development team and has played in more than 50 shows over 23 years, including *A Christmas Carol* last season. Other favorites: *Headspace Theatre*, *Holmes and Watson*, *It's a Wonderful Life: A Live Radio Play*, *The Drawer Boy*, and *The Rainmaker*. He designed costumes for *Ice Maidens* and *A Streetcar Named Desire*, oversees our audio descriptions for the visually impaired, and has led our COVID mitigation team since 2020. Other acting credits include *In Heart Theatre*, *Park Square Theatre*, *Jungle Theatre*, and *American Players Theatre*. He lives in Preston with Linda, his favorite scene partner for 49 years.



JACLYN JUNE JOHNSON joined the Commonweal at the start of 2020. An arts administrator, actor, director, playwright, costume designer, and teaching artist, Jaclyn has credits across the country, performing and designing with companies such as St. Croix Festival Theatre, Children's Theatre Madison, Creede Repertory, Riverside Shakespeare Festival, Riverside Theatre, Chicago's UTG Improv Theatre. Jaclyn received her B.A. from Cornell College. She wishes to thank: her family, friends, spouse, and their cats for their encouragement and love; and you for your support of the arts and specifically to the uniquely healing community of theatre.

RIVKA KELLY joined the Commonweal family in 2020 as the Production Stage Manager. Rivka hails from California but has spent the last decade as a traveling stage manager, mostly around the Midwest. Selected stage management experience includes shows with American Players Theatre, Milwaukee Repertory Theatre, Skylight Theatre, and Two Crows Theatre. Rivka received her B.A. from the University of Vermont. She's grateful for this welcoming community and her amazing family's support.

SEASON PASSES



See All 5 Shows
for only **\$115!**

Enjoy a year of professional live theatre at **30% Off** the regular adult ticket price!

- Seating in advance
- Discounts for guests
- Friend Discount: see shows again for only \$15
- Discounts to special events



RACHEL KUHNLE returned to the Commonweal in 2018, seven years after completing her acting apprenticeship in which she performed in *Metamorphoses* and *To Kill a Mockingbird*. She was last seen on stage as June in *Sanders Family Christmas*, and directed last year's *Dancing Lessons*. Rachel completed her M.F.A. in acting at the University of South Carolina in 2017. She loves her cats, her baby, and is grateful to her husband, Josiah, for being awesome.



JOSIAH LAUBENSTEIN joined the Commonweal late in 2018. He is the resident videographer and most recently appeared in *Dancing Lessons*. Before moving here, Josiah worked at Festival Theatre in St. Croix Falls, WI, as Marketing Director, and acted in nine productions over two years. Prior to that, Josiah lived in Columbia, SC, where he earned his M.F.A. in acting from the University of South Carolina. Josiah is a proud member of Glassbox Theatre Group, a co-founder of Highway Walkers Media Company, and is happily married to Rachel Kuhnle. He is besotted with their first child, Franny.



BRANDT ROBERTS is in his ninth season at the Commonweal. Favorite roles include Robert in *Boeing Boeing*, John Merrick in *The Elephant Man*, Mr. Coffee in *On the Verge*, Ragnar Brovik in *The Master Builder*, and Fancourt Babberley in *Charley's Aunt*. Cherished regional credits include *Measure for Measure* and *Henry IV Part I* at the Shakespeare Theatre of New Jersey. Brandt's original one-person show, *The Art of the Entertainer*, has been performed in several states and was adapted into an online presentation in 2020. Roberts holds a M.F.A. in Performing Arts from the Savannah College of Art and Design.

JODI RUSHING is in their fourth season at the Commonweal. Their favorite credits include *An Iliad* (Wealhouse), *On The Verge*, *I Love To Eat*, and *The Complete Works of William Shakespeare (Abgd.) (Rvsd.)*. Before their tech apprenticeship with the Commonweal in 2019, they stage managed for Doniphan Dance Project in Tupelo, MS, and served as the conference manager for the 2019 ACDA South Conference. Jodi holds a B.A. in Theatre and Film from the U. of Mississippi.



TIM SAILER started at the Commonweal as an apprentice in 2009 and is now in his fifth season with the company. He appeared in *A Christmas Carol*, *The Rainmaker*, *Picasso at the Lapin Agile*, and *An Enemy of the People*. Other Minnesota work includes performances at Park Square Theatre, Theatre L'Homme Dieu, and the Orchard Theater Collective. He spent five years with the American Shakespeare Center (Staunton, VA), where he played more than 50 roles in 35 plays. Other regional work: UT Shakespeare Festival, TX Shakespeare Festival, Houston Shakespeare Festival, and AR Shakespeare Theatre. Tim holds an M.F.A. from the University of Houston and is also an audiobook narrator.



Looking Forward
to a Great
2022 Season

Local Design Talent
Proudly Supporting
Local Professional
Theatre



211 11th avenue nw, rochester, mn 55901

507.206.6201



ADRIENNE SWEENEY is grateful to be in her 22nd season with the Commonweal, serving as the Assoc. Art. Dir. and Dir. of External Relations in addition to artistic roles. From Philadelphia, she holds an M.F.A. in Acting from the U/AZ. A commercial voice talent, she can be heard regionally on radio and TV. Favorite shows here include last season's *A Christmas Carol*, in which she had the great fortune to play Scrooge. Other favorites: *Silent Sky* (director), *Boeing Boeing*, *Steel Magnolias*, *Outside Mullingar*, and *Sylvia*. Adrienne believes that the act of sitting together in the dark sharing stories can help bring light to the world, something we all crave now more than ever. She looks forward to sharing time and space with you.



JEREMY VAN METER is enjoying his eleventh season in residence at the Commonweal. Favorite credits here include C.K. Dexter Haven in *The Philadelphia Story*, Anthony Reilly in *Outside Mullingar* and the title role in *Dracula: Prince of Blood* by Scott Dixon. His professional career began at The Barter Theatre in Virginia, and he has appeared regionally at Riverside Theatre, Illinois Shakespeare Festival, and Great River Shakespeare Festival. Jeremy holds an M.F.A. in Acting from the U. of Iowa and makes his home in Lanesboro with his lovely and extremely talented wife, Catherine Glynn.

LOCAL FOOD • DOWNTOWN LANESBORO

pedal pushers
cafe

LOVE YOUR FOOD!

www.pedalpusherscafe.com | 507-467-1050

NIAGARA CAVE

Nationally recognized among best U.S. caves
One of "Ten Most Incredible Natural Wonders in MN"

Harmony MN

- underground waterfall
- stalactites & stalagmites
- 1-hour guided tour
- ancient fossils
- gemstone mining
- 18-hole mini golf

Voted BEST Family Destination 2009-2015

Niagara Cave

★ 2 miles 30

(507) 886-6606
www.niagaracave.com

Amish Tours of Harmony

In the Sugar Plum House on the Village Green & 45 Main Ave. N., Harmony, MN

Experience a Lifestyle...

- where horse & buggy still provide the transportation
- the home is lighted by kerosene lamps
- water is heated on a woodburning stove

Enjoy an exciting tour with one of our knowledgeable guides

- Mini Bus Tours
- Car Tours
- Group Bus Tours
- Spring through Fall
- No Sunday Tours

For Advance Tickets & Information
(507) 886-2303
www.amish-tours.com



Lori & Oakley

GRANNY'S



LIQUOR

COME IN AN LET *Oakley*
HELP YOU SELECT A TASTY CHOICE!

Open 7 Days!

(507) 467-2700 • 113 Parkway Ave, Lanesboro

www.grannysliquor.com

Old Village Hall Restaurant & Pub



Fine dining in a casual setting. On the deck or in the upstairs dining room.

Wine Spectator
Award of Excellence

Reservations
Recommended

(507) 467-2962

111 Coffee Street
Lanesboro

www.
oldvillagehall.com

ORGANIC COFFEE

Parkway Market & Coffeehouse
--Open Daily--
Corner of Coffee Street & Parkway Avenue

Selling Fat Cattle

Market Cows & Bulls
Wednesday Auctions at 8:30 AM

Selling all classes Livestock
Friday Auctions at 10:30 AM

Special Feeder Cattle & Breed Cow Auctions
Scheduled thru the Fall & Winter

Joe Nelson, Owner Cell: 507-450-6763 Barn: 507-467-2192
402 Coffee St E, Lanesboro, MN 55949 • LanesboroSalesCommission.com



Stop in for breakfast or lunch at the
Stockyard Cafe! Open on sale days.

Minnesota Lanesboro

"Your Community Banks for Generations."

Fountain, MN
(507) 268-4321
www.fsbfountain.com

FSB ountain



Root River

—STATE BANK—
CHATFIELD MN

Chatfield, MN
(507) 867-4120

www.rsbchatfield.com



Open Late After the Show
Bring your ticket stub in for \$1 off!

Two Decks • Live Music
Trivia Tues & Open Mic Thurs 7:30 pm

highcourtpub.com 507.467.2782
109 Parkway Lanesboro, MN

F&M *Community* BANK

WE MAKE
BANKING
EASY![®]

Personal Banking
Business Banking
Mortgage Lending
Certificates of Deposit
Online Bill Pay
Remote Deposit Capture

FMCOMMUNITY.com



PROUDLY
SERVING

PRESTON

CHATFIELD

ROCHESTER

SINCE 1911



PROUDLY
INSURING

LIFE & HEALTH
HOME
AUTO
BUSINESS
FARM

SINCE 1911



WE MAKE
INSURANCE
EASY![®]

F&M INSURANCE SERVICES

Service *You* Can Count On

100 Saint Anthony St. N. • 507.765.3387
RRIns@FMcommunity.com

Auto-Owners INSURANCE

LIFE • HOME • CAR • BUSINESS

www.dragonflybooks.com

GET A BOOK BUZZ...



DRAGONFLY BOOKS

...and fly beyond your imagination at Dragonfly Books.

Kate Rattenborg, Bookseller.

563-382-4275 • 112 West Water Street Decorah • info@dragonflybooks.com

Blue Heron Knittery

Purveyor of fine yarns, knitting & crocheting supplies, books & patterns



CALL AHEAD for Current Hours

www.BlueHeronKnittery.com

300 W. Water, Decorah, IA • (563) 517-1059

GROCERY
BULK
PRODUCE
DELI
CHEESE
MEAT
BAKERY
WINE/BEER
SUPPLEMENTS
BODY CARE

COOPERATIVELY OWNED.

Specializing in organic & locally grown.



ONEOTA
COMMUNITY
FOOD
COOPERATIVE
decorah, iowa

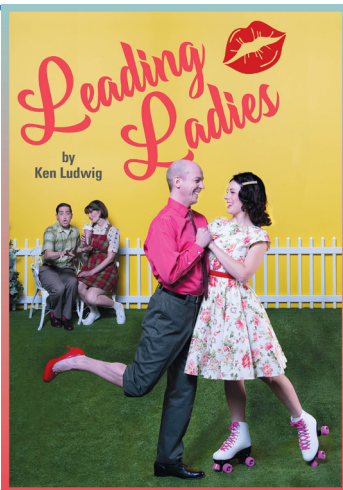
312 West Water Street, Decorah • 563.382.4666 • www.oneotacoop.com • Open 9:00 am to 7:00 pm daily

EVERYONE CAN SHOP • EVERYONE WELCOME • NO MEMBERSHIP REQUIRED

Be sure not to miss...

A SPARKLING
SCREWBALL
COMEDY

MAY 14 - AUG 27





101.1 THE RIVER

WINONA'S GREATEST HITS

LISTEN ONLINE AT WINONARADIO.COM
OR ON OUR NEW MOBILE APP



Download on the
App Store



GET IT ON
Google Play

ROCHESTER
 REP
THEATRE

www.rochesterrep.org

La Crosse Symphony Orchestra

2022-2023 SEASON

SOMETHING TO

Believe in

Bringing you a season of refreshing movements that bring joy and sweetness.

order your season tickets today at lacrossesyphony.org



SPRING 2022 PRODUCTIONS



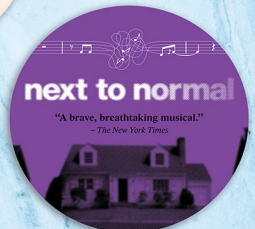
March 20, 2022



April 1-10, 2022

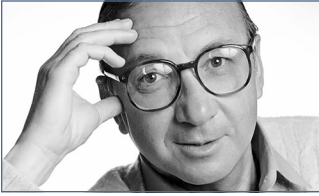


April 16, 2022



April 29-May 15, 2022

ABOUT THE PLAYWRIGHT



Marvin Neil Simon (1927-2018) was an American playwright, screenwriter, and author. He wrote more than 30 plays and nearly the same number of movie screenplays, mostly film adaptations of his plays. He has received more combined Oscar and Tony Award nominations than any other writer. Simon grew up in New York City during the Great Depression. He enjoyed watching early movie comedians like Charlie Chaplin. After graduating from high school and serving a few years in the Army Air Force Reserve, he began writing comedy scripts for

radio programs and popular early television shows, including Sid Caesar's *Your Show of Shows* where, in 1950, he worked alongside other young writers including Carl Reiner, Mel Brooks, Woody Allen, Larry Gelbart, and Selma Diamond.

His first produced play was *Come Blow Your Horn* (1961). It took him three years to complete and ran for 678 performances on Broadway. It was followed by two more successes: *Barefoot in the Park* (1963) and *The Odd Couple* (1965). He won a Tony Award for the latter. It made him a national celebrity and "the hottest new playwright on Broadway." From the 1960s to the 1980s, he wrote for stage and screen, including adaptations of his own plays. His style ranged from farce to romantic comedy to more serious dramatic comedy. Overall, he garnered 17 Tony nominations and won three awards. In 1966, he had four successful productions running on Broadway at the same time, and in 1983 he became the only living playwright to have a New York theatre, the Neil Simon Theatre, named in his honor.



No radio? No problem!

Find us on Facebook, Twitter and at wpr.org.



WISCONSIN
PUBLIC RADIO



ASK AT THE BOX OFFICE ABOUT OUR ASSISTED-LISTENING DEVICES, SPECIAL SEATING FOR THOSE WITH MOBILITY IMPAIRMENTS, ASL-INTERPRETED PERFORMANCES AND VISUAL DESCRIPTION FOR THE SIGHT-IMPAIRED.

I Ought to Be in Pictures

by Neil Simon

Director	Adrienne Sweeney
Stage Manager	Kelsey Heathcote
Scenic Designer	Justin Hooper
Lighting Designer	Thomas White
Costume Designer	Jaclyn June Johnson
Sound Designer	Josiah Laubenstein
Dialect Coach	Hal Cropp
Props Designers	Brandt Roberts, Elizabeth Dunn

CAST

Steffy	Betti Battocletti
Libby	Grace Cummings
Herb	Jeremy van Meter

Setting

Los Angeles, 1979.

Runtime is approximately 2½ hours, with one 15-minute intermission.

I OUGHT TO BE IN PICTURES is presented by arrangement with Concord Theatricals on behalf of Samuel French, Inc.
www.concordtheatricals.com

Sponsor:



WISCONSIN
PUBLIC RADIO

Media Partner:

women
melchester

NOTES FROM THE DIRECTOR



The father-daughter relationship has always tugged at me. My parents separated when I was 2½, after which my dad and I had what could be called a “Sunday Relationship.” As these were the days before co-parenting, nesting, and joint custody, my dad would pick me up after Mass, head to my grandparents’ house for family dinner, and return me before dark. Over the years, my father’s mental and physical health declined dramatically and our visits became fewer and farther between. He’d fall off the grid for months at a time and eventually our relationship evaporated. In my mid-twenties I realized his health could not hold out forever, and I decided to visit him when I was home for the Christmas holiday. He passed away December 2nd. I never got that chance.

I Ought to Be in Pictures offers the opportunity to reflect on the relationships in our lives—the successful and the failed—and encourages us to consider the possibility of second chances. It reminds us of the power of courage. And it does so through the uniquely humorous yet heartwarming words of one of America’s greatest playwrights. I hope you enjoy your time with Libby, Herb, and Steffy as much as I did. This one is in memory of my dad, Francis J. Sweeney.

—Adrienne Sweeney

ALSO FEATURING



Betti Battocletti (Steffi) has performed at the Commonweal in roles that include Christmas Present in *A Christmas Carol*, Vera in *Sanders Family Christmas*, Mary in *On the Verge*, Virginia in *The Clean House*, Rona in *The 25th Annual Putnam County Spelling Bee*, and Clairee in *Steel Magnolias*. Other favorite credits include *Always...Patsy Cline*, *The World Goes Round* and *Urinetown* at The Jungle Theater in Mpls; *42nd Street*, *Prisoner of Second Avenue*, and as Cassie in *A Chorus Line* at Artistry. She is also a lyricist, playwright, choreographer and owns Bodiology Pilates in Minnetonka, MN.

Justin Hooper (Scenic Designer) holds a B.A. in Theatre from Augsburg College, where he minored in English and Dramaturgy. He began his professional career as a stage manager for Glimmerglass Opera in Cooperstown, NY. He survived two seasons but succumbed to homesickness, returning to Minneapolis to become a scenic artist for the Guthrie. Later, he took side-gigs as History Theater's technical director, Pioneer Place's production manager, and an audio-visual technician for AVEX. He has designed scenery (and occasionally lighting) for myriad Twin Cities companies and has branched into the world of interior design—his portfolio includes two restaurants, a liquor store, and a brew pub. He is currently the technical director for Concordia University's Theatre Department in St. Paul.

Thomas White (Lighting Designer). Working again with his Commonweal family, Thomas is incredibly grateful that The Commonweal supported him through COVID and 2020. His day job involves daily deliveries of 900 gallons of milk from Hansen's Dairy to happy people. In his spare time, he consults on technical matters for local and regional theater. Originally from Ames, Iowa, Thomas was the resident lighting designer for the Oster Regent Theatre in Cedar Falls while earning a B.A. in technical theater from the U. of Northern Iowa. Thomas is a founding member of Sissy's Circus, a burlesque troupe that pushes the boundaries of gender identity and sexuality through drag, dance, and theatre. His professional experience also includes work with the Colorado Shakespeare Festival and the Telluride Film Festival. It's great to be back in Lanesboro.

SPECIAL THANKS

Festival Theatre: Kim Murphy; Terry Neneman, Cami Fuller, Jody Slominski, Stacey Schultz, Desiree Borth-Ferrie, Elizabeth Biel; St. Mary's University: Anastasia Goodwin.

2022 Awaits You

I Ought to Be in Pictures

by Neil Simon | APR-JUL

Leading Ladies

by Ken Ludwig | MAY-AUG

The Mystery of Edwin Drood

by Rupert Holmes | JUL-OCT

Good People

by David Lindsay-Abaire | SEP-NOV

Alice in Winter Wonderland

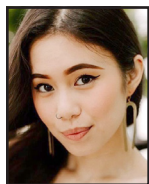
by Janet Allard & Michael Bigelow Dixon | NOV-DEC



See them all
with a Season
Pass for just
\$115!

APPRENTICE CLASS OF 2023

Happily, Commonweal has resumed our Apprenticeship Program this year. This 10-12-month, fully immersive, live-work program affords unique opportunities for young theatre professionals to study the craft & business of making live theatre. Learn more on our [website](#).



MARIA CINA is overflowing with gratitude for the opportunity to work with and learn from such a fantastic family of artists. She is honored to be a part of Commonweal Theatre's Apprenticeship class and hopes you enjoy the show! Maria earned her A.A. in Commercial Photography from Madison College (WI) and her Acting Certificate from The Gaiety School of Acting in Dublin, Ireland. She is currently on hiatus from studying Theatre Arts and Communication Studies at the U/MN Twin Cities, with plans to resume post-apprenticeship. Credits include Morticia Addams in *The Addams Family Musical*, Kendra in *The Gulf*, Asst.

Stage Manager for *Romeo and Juliet*, and U/S Marnie for *Lewiston/Clarkston*. When not on stage, Maria can be found sipping tea and cuddling her cat, Knives Meow, in a sunny corner of the apartment, a fantasy novel close by. She sends love, hugs, and pinky promises to all her friends and family. instagram: @mariashe_



GRACE CUMMINGS has been acting and performing for almost a decade. She started in Monroe, LA, at Strauss Youth Academy for the Arts. Then she moved to Natchitoches to join Northwestern State U's Theatre & Dance program, and to participate in the LA Scholars' College. Her philosophy as an artist is simple: art is about connection. No matter if she is writing, acting, singing, or painting, she aims to use her art to connect with those around her. Her one goal onstage is to tell a story that will not only connect her with her audience, but also with herself.

Some roles include Elizabeth Proctor in *The Crucible*, Olivia in *Twelfth Night*, Prospero in *The Tempest*, and Deb in *Ordinary Days*. She was also able to debut two original roles, one written by the award-winning Del Shores, in *In Memoriam of Lena* as Julia, and one written by herself, in *Emilia* as Emilia Bassano. This Louisiana girl is excited to be joining Commonweal as an apprentice while getting to make new friendships and explore Minnesota!

SARA HUESER serves as the technical Apprentice for the 2023 season. Favorite credits include *The Wild Party*, *My Way*, and *The Other Place*. She has spent many seasons in Savannah, GA, and Greenville, SC, working on shows. Originally from Pennsylvania, Sara holds a bachelor's in Computer Engineering and a B.F.A. in Dramatic Writing from Savannah College of Art and Design.



JOHN B. NICOL is incredibly excited to be returning to the theatre scene as an acting apprentice with the Commonweal. Born and raised in community theatres around Northeastern IA, he went on to receive his B.S. in Theatre Arts from MN State Mankato. While there he had the opportunity to play some fun roles including Matt Friedman in *Talley's Folly*, and Smee in *Peter and the Starcatcher*. In regional theatres, he had fun playing Willard Hewitt in *Footloose* at the Paul Bunyan Playhouse and Demetrius in *A Midsummer Night's Dream* with Free to the People Theatre.



TANNER SABOL is thrilled to join the Commonweal Theatre for the first time! Growing up in Sioux Falls, SD, and graduating with a B.F.A. in musical theatre from the U. of North Dakota, he initially began acting in high school, being a part of the Oral Interpretation team all four years. Since then, he has played roles such as Felix in *The Odd Couple*, Sweeney in *Sweeney Todd*, Richard Hannay in *The 39 Steps*, and was also a performer in the American College Theatre Festival's 2020 Cabaret. He hopes to find another home away from home at the CTC!



ALEX SCHLESINGER is ecstatic to be making their professional acting debut on the Commonweal Theatre's stage. Alex graduated from Luther College in 2021 with a B.A. in Theatre, and they are delighted to join the Commonweal's apprentice class this year. Favorite roles include Riff Raff in *The Rocky Horror Show*, Florizell in *The Winter's Tale*, and Amos Hart in *Chicago*. Alex would like to thank their mentor, professor, and good friend Jeff Dintaman for his years of support and sharing of knowledge that got Alex to where they are today.

HALF THE SKY

Saturday, May 7 @ 7:30

Christ United Methodist Church, Rochester

According to a Chinese aphorism, "women hold up half the sky." We are all blessed when our community and our world work to unleash everyone's full potential.

Rochester Mayor Kim Norton will be our special guest along with a representative from the Jeremiah Program. The concert will feature music by women composers as we celebrate women in our community.



Tickets & more info at
www.ChoralArtsEnsemble.org

2022 SEASON
JUN 18-JUL 31

**GREAT RIVER
SHAKESPEARE
FESTIVAL**
WINONA, MN



TICKETS: GRSF.ORG | 507.474.7900

2022 Season Artwork by Maggie Panetta @maggie_designss



LANESBORO ARTS



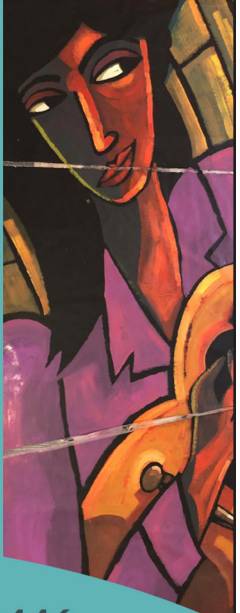
Galleries
year-round exhibitions

Rhythms on the Root
outdoor summer music

Art in the Park
Saturday, June 18, 2022

Arts Campus
public art & education

St. Mane Theatre
music, theater, dance, and more



lanesboroarts.org // 507-467-2446

We Can't Do This Without You

For 34 Seasons

the Commonwealth has been inspiring hearts, minds and souls. It would be easy to believe that these marvelous stories have come about because of the hundreds of talented artists who have called the Commonwealth home.

Easy, but far from the truth. The real heroes who make up this company are you, our audience and loyal supporters.

But your tickets only cover half of what it costs to create live, professional theater. For us to continue bringing theater magic to you and future generations, please consider a gift in support of our mission "to enrich the common good."



Here's How You Can Help:

MDC

"When the MDC was initiated, we immediately joined. This level of giving helps ensure a solid financial base for the organization to meet their annual expenses while planning for the future. We encourage you to join us in supporting the Commonwealth, so we all can continue to enjoy the wonderful productions we have come to treasure."

—Jon & Mary Hart

The heart of our giving programs, the **MDC** consists of individuals and households who make a non-binding, 10-year commitment of support. For a schedule of amounts and benefits, please see any staff member or visit the "donate" page on our website: www.commonwealththeatre.org

Planned Giving



"By including Commonwealth in our estate plan, we feel good knowing that we'll be helping to ensure that this gem will be here for future generations."

—Ken & Sally Mogren,
Winona, MN

Please consider remembering the Commonwealth Theatre in your planned giving. Visit our website at <https://commonwealththeatre.org/support/planned-giving/> for more information.



Any contribution you make to our lobby donation jar is deeply appreciated!

Sponsorships & Underwriting

There are myriad ways that you can play a starring role in supporting one of our mainstage shows, or even the entire season! Through these partnerships, we can maintain a high standard of artistic excellence while providing greater access to all. Sponsorship comes with its rewards. To learn about sponsorship or underwriting opportunities, including recognition and benefits, contact **Hal Cropp** at hal@commonwealththeatre.org, or (507) 467-2905 X203 or visit: www.commonwealththeatre.org/donate/

DONORS

THE PEOPLE WHO MAKE THE COMMONWEAL DREAM A REALITY

Here are all ongoing MDC pledges and all memorials made from **January 1, 2021, to February 15, 2022**. Due to space limitations, we cannot list all our donors here. Please find them on our website, www.CommonwealTheatre.org. For information on all our individual donor programs, contact **Jeremy van Meter: 507-467-2905 ext.211, jeremyvm@commonwealththeatre.org**

INSTITUTIONAL DONORS IN 2021

McKnight Foundation
Minnesota State Arts Board

THE MDC

Our MDC members are the lifeblood of the Commonwealth. **Members donate annually** through their long-term pledges and receive unlimited admission, priority seating and more. *Heartfelt thanks* to these generous people—without them, we would not be here!

\$2,000+ per year

Fastenal Company
F&M Community Bank
Bob Kierlin & Mary Burchrictor

\$1,000-\$1,999 per year

David & Candace Arp
Bruce & Pauline Bailey
David Bange
Stephen & Martha Bartenhagen
Kenneth Baumhman & Leandra Sunseri
Sheri Borcherding
in memory of Jack Michael Bostwick & Connie Williams
Merri Bremer & Scott Koon
Michael & Char Brown
Dan Christianson
Hal Cropp & Adrienne Sweeney
Jon & Chris DeVries
Phil & Heidi Dybing+
Ron & Rae Evenson
Laura & George Fix
Michael & Elaine Edwards
% Habberstad House
Bed & Breakfast
Jon & Mary Hart
Carol Heyl
Willa & Dave Holger
Craig & Tracy Hurley
Barbara Jackman
Robert & Renee Jacobson
Bill & Lisa Kelly
Lou & Maureen Guillou
David & Gail Judisch
Mark & Kris Litzow
Lee & Ione Loerch
Merchants Bank
Eric & Andrea Miehlisch

Chris Miller & Hank Taxis
Gail & Phillip Minerich
Ken and Sally Mogren+
John & Lynne Amuter
Kurt Neuenfeld & David Watson
Ted Olson
Scott & Angie Taylor %
Pedal Pushers Café
Rob & Patty Porter
Kent & Juanita Ruby
Charles Ruen
David & Joan Ruen
Richard Rundle
Dale & Sue Scobie
Jim Sheeley
Julie & David Warner
Christopher & Nina Wendt

\$500-\$999 per year

Barb Soma
% Amish Experience
Alan Bailey
Duane & Angel Bakke
Barb & Larry Berge
Michael Bigelow Dixon
Scott & Karen Bingham %
Thrivent Financial
David Boen
Terry & Renae Boydston
Barb Soma % E2 Boutique
Heide Buettner
Joseph & Sarah Chase
Carol & Sheldon Clay
Bob & Alice Johnson
David & Karen Danielson
Linda & David Hennessey
Leslie & Jo Hittner
Keith & Debbie House
Jane B. Jamison
Kapp Kapter & Maureen Jameson
Minette & Paul Johnson
Susan & Lyle Klug
Kurt & Ann Knodel
Rayson Lorrey & Wei-Lin Jung
Dr. Thomas & Leone Mauszycki
Jon & Sarah Pieper % Old Village Hall Restaurant
LeAnn & Gary Olson
Glennice Rhodas
Jane Ryan
Carl Sandquist
Kevin & Leela Scattum
Chris & Mary Schmidt
David & Darlene Shaw
Daryl & Michele Thompson
Violet Walk

\$250-\$499 per year

American Legion
Post #40 Lanesboro

Blake & Beth Abdella
Mimi Abell
Zoe Abrahamson
Laura Admerson
Janey Afseth & Dwight Scrabeck
Shirley & Mark Ahlquist
Jane Ahlstrom
Bari & Peter Amadio
Drs. John Boeker & Dory Gardner %
Amethyst Dental Care
Harold & Angie Amsbaugh
Horace J. & Rose Andersen
Mary Anne Anderson & June Kazel
Asahi Loft of Harmony
Charles & Vonnie Aug
Jerry & JoAnn Aulwes
David & Lori Bakke %
Granny's Liquor
Russell & Cathryn Baldner
Joe & Sue Banken
Diane & David Banner
Carolyn & Roger Barsness
Dave Beal & Carol Berteotti
Becky Becker
Kathryn & Brad Benke
Harvey Benson & Bonita Underbakke
Judi & Dick Bergen
Gene & Renee Bergstrom
Andrew & Anita Bisek
JoEllen & Dean Blegen
Michaeleen Bonner & Scott Gottfried
Donald & Pat Borcherding
Craig & Nina Bren
Ann Brice & Bill Haviland
Kathryn Burch
Stela Burdt
William & Diane Burdt
Philip Burkholder
Jim, Kathy, Aaron & Colin Buzza
CRW architecture + design group
Charlotte & James Carey
David & Brenda Carlson
Paul & Bridget Carns
Elaine Case & Bill Wiktor
John & Sandra Castek
David Cavagnaro
Ron & Nancy Christensen
John & Birgitte Christianson
Dr. Keith & Kathy Churchill
John & Jane Ciecko
George Cipov
Margaret & Neil Claus
Glee & Gordon Claussen
Gerald Clymer & Ardy Olds
Richard & JoAnn Cole
Debra Collum
Duane & Sonja Cook
Jim & Pat Cooper
Jeff & Lavon Court
Carlo Cuesta & Dana Gillespie
Jerry & Dottie Dallmann
Larry & Betty Danielson
Norman & Janette Decker
Joe Deden & Mary Bell
Bob Ditsch
Allen & Marcia Dollerschell
David Drury
Joseph & Lois Duffy
Carol & Marv Eggert
Henry & Carol Elwood
Hisako Y. and Dale Eppen
Herb Erickson & Helen Kolb
Pastors Kerry Eversole & Cindy Cordes-Eversole
Phil & Barbara Feiten
Leland & Jeanne Ferden
Carmen Fingerson
Anne Flynn & Jon Buggs
Dennis & Nancy Forsyth
Ted & Cindy Frana
Jill Frieders
Michael Fritzsche & Anne Beighley
Dick & Marge Fuller
John Gaddo & Nancy North
Tom & Lynne Gaffey
Jim & Carla Gallina
Shirley Gangstad
Gary & Elaine Gasset
William & Laura Gentry
Bonnie Gibson & Gretchen Schade
Bill & Sarah Goff
Alan Goldberg & Kay Udey
Jackie Rehm %
Green Gables Inn
Sandra & Joel Grettenberg
Martha & Jim Griesheimer
Dale & Beth Haaland
Paul & Louanne Hamann %
High Court Pub
Richard & Diane Haight
Janet & Dennis Haller
Robyn Hansen
Chris & Jessica Hanson
Peggy Hanson & Frank Wright
Bill & Eileen Harguth
Dr. Gary & Jean Hayes
Janice Heikes & Lee Zook
Paul & Jessica Hemenway
Beth Hennessy & Tom Barnes
Marian Maciej-Hiner
Betsy Holbrook & Dona Conway
Marilyn Holland
Dick & Bette Houtkooper
Linda Hyde
Jim & Becky Iverson

COMMONWEAL THEATRE LEGACY SOCIETY

+ Indicates members.

Please consider the Commonwealth in your estate planning.

Contact Jeremy van Meter about this or any of our donor programs: (507) 467-2905 ext.211
jeremyvm@commonwealththeatre.org

JuliaClaire Consignment & Variety



152 Main St. • Preston • 507-765-2399

- Quality clothing for the entire family
- Fashion accessories & Jewelry
- Books, Games & Videos
- Housewares & Home Accessories

www.facebook.com/affordableclothingprestonmn

117 Parkway Ave. N.
Lanesboro, MN 55949
(507) 467-2994

e2boutiquemn@gmail.com

Oakenwald Terrace

SOUTHERN MINNESOTA'S
PREMIER BED &
BREAKFAST

218 Winona St.
Chatfield, MN
(507) 867-3806



www.OakenwaldTerrace.com

AMISH EXPERIENCE



Gift Shop featuring locally handcrafted Amish Quilts,
Baskets & Furniture; Collectibles; Home Decor;
Garden Accents; & Specialty Foods

visit our Online Store

www.village-depot.com

105 Parkway Ave. N. • Lanesboro, MN 55949 • 507-467-2992

GREEN GABLES INN

15 Modern Rooms

- Bridal Suite
- Fireplace & Whirlpool
- Smoke-free
- Open All Year

Hwy 16 West, Lanesboro, MN

Modern Convenience in a Quaint Country Setting

800-818-GABLES (4225) 507-467-2936

green@acegroup.cc

www.lanesboroweb.com/greengables

WALL OF CHOCOLATE

Parkway Market & Coffeehouse

--Open Daily--

Corner of Coffee Street & Parkway Avenue

HABBERSTAD HOUSE BED AND BREAKFAST



A relaxing retreat

HABBERSTADHOUSE.COM | 507-467-3560

Health Through Chiropractic

OFFICE
HOURS

M, T, W, F:
9AM - 6PM

Thursday:
Closed

River Hills
Chiropractic



102 W. Sheridan St.
Lanesboro, MN 55949

507-467-2629 (24-hr. call 507-450-2466)

Scandinavian Inn



A Bed & Breakfast in Lanesboro

Like theater? You'll love our
Mystery Nights! • 507-467-4500

www.scandinavianinn.com

507-467-8663 STONE MILL HOTEL & SUITES

Historic Lanesboro, Minnesota



WWW.STONEMILLSUITES.COM

1/2 block from the theatre.

A lovely drive just minutes from Lanesboro on the **National Scenic Byway** Route 16 & located beside the

Root River 
State Bike Trail

LOKEN'S RUSHFORD INN

rushfordinn.com 507-864-2222

Visit the **VALLEY**

Rushford Peterson Valley, a hidden gem in scenic bluff country with space to breathe and explore! Located 14 miles east of Lanesboro on scenic Highway 16.



THINGS TO DO

Experience bluff country by trail or water!

- Root River Bike Trail: 60 miles of paved trail
- Bluff Country Scenic Byway
- Root River fishing, tubing, canoeing

PLACES TO STAY

- Inns, campgrounds, vacation rentals

PLACES TO EAT

- Many local favorites

PLACES TO SHOP

- Basic necessities or items unique to the Valley



take root

Rushford Peterson Valley

MINNESOTA

Find us online for a full list of activities and events
www.rushfordpetersonvalley.com



We proudly
support
Commonweal Theatre!

Whatever your print needs, we have you covered. Catalogs, booklets, brochures, flyers, business cards, signs, banners, wall & floor graphics, POP displays, trade show materials and much more. We offer layout, design, digital printing, variable data, offset printing with inline coating, UV coating, full service bindery and delivery. In addition to printing, we offer complete mailing services and fulfillment.

We are your full service printer!

1416 Valleyhigh Drive NW Rochester, MN 55901 • 507-288-7788 or 800-298-7780 • www.johnson-printing.com

DONORS — THE PEOPLE WHO MAKE THE COMMONWEAL DREAM A REALITY

Troy & Jenna Iverson
Michele & Robert Jersak
Buster & Annette Johnson
Jerry & Patti Johnson
Linda G. Johnson
Tory & Julie Johnson
Karst Brewing
Mary and Ron Kaser
Janelle Kelleher
Norb & Nancy Kelly
Ed & Ann Keuper
Annette & Richard Kiehne
Julie & Tim Kiehne
Ross Kiehne
Sharyn & Bill Kiehne
Fred Kiel %
Sacred Clay Inn
Jay & Patricia Kim
Karl & Patricia Knutson
Robert & Sharon Knutson
Marlene & Robert Kohner
Ron & Nancy Kreinbring
Gordy & Marsha Kuehne
Rachel Kuhnle &
Josiah Laubenstein
Susan & Ron Kurth
Dick & Mary Ellen
Landwehr
Martha & John Langowski
Carolyn Larson
Reginald & Jerilyn Laursen
Richard & Penny Leake
Connie & Glenn Leckband
Karen A. Lischer
Marcia & Bob Love
Ron & Shaune Luck
Susan & Lyle Luzum
John & Sandra MacLaughlin
Kathy MacLaughlin &
Mike Augustin
David & Ruth Marshall
Matt Marshall
Ramon G. Martin
Nancy Martinson &
Jeff Kamm
Wendy & Mark Mattison

Frank Mcanulty &
Hertha Lange
Roger & Lynn Meyer
Gary & Sharon Miller
Robert Milligan &
Sharon Danes
Wanda & Craig Mitchell
Martin & Mary Lou Mohr
Terry Morrison
Greg Murphy &
Jean Daywitt
Kay Nelson & Jim Parker
Elise Nelson
Harland Nelson
Linda Nelson &
Mike Larsen
Dick & Joan Niemiec
Terry & Karen Neneman
André & Madeline Novack
Frieda & Ron Nowland
Gary & LeAnn Olson
Kenneth & Sharon Olson
Jim & Ruth Ostrem
Dennis & Joan Paulson
David & Becky Pederson
Drew & Cheryl Pellett
Robert & Phyllis Penheiter
Ann & Noel Peterson
Sarah Peterson %
Peterson Creative
Photography & Design
Jim & June Reineke
David Reichert &
Jeanne Thoreson
Pat & Joe Reymann
Jarrett & Linda Richardson
Terry Rindfleisch &
Linda Hirsh
Renata Rislow
Steven & Pam Ristau
José Rivas
Janis Rockabrand &
Jim Wolfe
Kristie & Paul Roeder
David & Joy Roslien
Craig Ross

Edward & Katie Ruen
Dave & Nancy Runningen
Jimmy Schwichtenberg %
S & A Petroleum, Inc.
Peter & Vicki Torkelson %
Scandinavian Inn
Mary Schaller
Bruce & Kathy Schott
Matt & Stacey Schultz
Matthew & Lisa Schutte
Jessica Schwier
Kay Shaw
Tom & Marcy Sherwood
Linda Sifford & Tom Sautter
Marilyn Silver in memory of
Howard Silver
Brian & Betty Singer-Towns
Kent Simmonds &
Lynne Sootheran
Kathleen & Delbert Smith
Jeanette Sobania &
Pam Nelms
Eugene & Sandra Somdahl
Jim Spencer &
Michele Valletta
Charlie & Ann Sparks
Michele & Rick Speltz
Byron Stadvold
Kim & Caren Stelson
Rick & Cheryl Lamon %
Stone Mill Hotel & Suites
Jack & Kay Strobel
Glenn & Pat Tabor
Linda Tacke
Edward Taylor
Dave & Marti Gray %
James A. Thompson
House
Cindy Beech &
P. J. Thompson
Diane & Bill Tisue
Richard & Jeanne Toews
Stephen & Julie Troutman
Margaret Vagts
Jeremy van Meter
Rick Walters & Sanna Yoder

Joyce Walker
Sandy Webb
Bette & David Weinmann
Jim & Mary Wilder
Kay Wold
Richard & Louise
Wolfgangram
Tom Woxland &
Carol Birkland
David & Jeanne Wright
Joel & Julie Young

\$150-\$250 per year
(Single MDC Level)

Karen Acker
Constance Arneson
Jim Boeding
Terry & Renae Boydston
Bertha Boyum
Joanne Broady
Ingrid Callaghan
Naomi Craft
Elizabeth Doty
Elizabeth Dunn
Jean Ellingson
Claire Ennis
Ruth Fjelstad
Elizabeth & James Fritz
Sherry Gribble
Kathie & LeRoy Haynes
Doris Heikes
Jenine E. Jordahl
James Kunz
Philip Muehe
Gary Olson
Patty Peterson
Marilyn Riederer
Brandt Roberts
Barbara Ruhter
Bev Spande
Stephen Strickler
Brett Winter
Jane Wolfram

COMMONWEAL BOARD OF DIRECTORS

Alan Bailey, David Boen, Dan Christiansen, Laura Gentry, Chris Hanson, Wendy Mattison, Ken Mogren, Sarah Peterson, José Rivas, Joan Ruen.

CURRENT INDIVIDUAL DONORS

MORE PEOPLE WHO MAKE THE COMMONWEAL DREAM A REALITY

Listed below are all the donors, who are not MDC members, who generously contributed to the Commonwealth in 2021. To make a donation please use the "Get Involved" page on our website, or send your check to **Commonweal Theatre, P.O. Box 15, Lanesboro, MN 55949**. Be sure to write "donation" on the memo line.

Aaron Preusse	Bob & Pat Fiedler	Darlene & Anya	Elizabeth Stewart &
Aaron Silver	Bob & Sheri Erickson	Dammermann	Paul Zellwegger
Abbey Hellicksen	Bob Anderson	Darlene Schober	Elizabeth Lopp
Adria Ramos	Bob Wittrock	Dave & Amanda Schutz	Elizabeth Meyer
Aimee Chastain	Bonnie Warrington	Dave & Nancy Harrison	Ellen Macdonald
Alessandra Chiareli	Brandon Zembal &	Dave Johnston	Ellen Rasmussen
Alex Schlesinger	Tanea Mahanna	David & Helen Dechaine	Emily Spende
Alison & Brad Leathers	Brenda Petersen	David & Shirley Mahoney	Eric & Gayle Bunge
Allen Kaufmann	Brent Meyer	David Arneson	Eric & Lisa Farnberg
Allison Rupp	Brett Cook	David Bellows	Eric Burdt
Allyson Evans	Brian & Kristine Lee	David Gilmore	Erica Jensrud
Alysa Mahaffay	Brian Baskett	David Pratzon	Eugene & Margaret
Amanda (Davis) Lenweaver	Briant & Betsy McMahon	David Rothstein &	Hokanson
Amanda Rafuse	Brooke Smith	Sharon Akimoto	Evelyn Schlichting
Amy & Val Cordry	Bruce & Cynthia Wulfsberg	David Susag	Fae Wilson
Amy Kotsenas	Bruce & Jan Larson	Deb & Brian Benoy	Florence Sandok
Amy McKnight	Bruce Nelson & Barb Watts	Debbie & Brad Olson	Fran Sauer
Amy Rumschlag	Bryan & Kathy Kufus	Deborah Pitzen	Fred & Ruth Kurtz
Andrea Miller	Bryan Roecker	Deborah Vosler	Fred Smith
Andy & Karen Heimdahl	Camille Burke	Debra & Douglas Dewanz	Gail Prete
Andy Stella	Candace & Gregory	Debra Holmgren	Gale Nelson
Anita Jean Hall	Carlstrom	Dee Kimmel &	Gary & Anita Wilson
Ann Brice & Bill Haviland	Carl Duyck	Jenny Kennedy	Gary & Joanne Gilbertson
Ann & Mark Thompson	Carl Lindberg	Denise, Theodore &	Gary & Nancy Hayden
Ann Baker	Carla Noack	Valerie Barthels	Gary & Sharon Johnson
Ann Ladd	Carlene & Cameron Roberts	Dennis & Carolyn Davidson	Gary & Susan Corbisier
Ann Siverling	Carol & Clif Lucido	Dennis & Marilyn	Gary Danciu
Ann Yourell & Steve Sharp	Carol Dixon	Bettenhausen	Gavin Nachtigall
Anne & Greg Yakle	Carol Overland	Dennis Magnuson	Gayle & Richard Garrity
Anne Drecktrah	Carol Taylor	Diana Percy	Gayle Waldera &
Anne Marie & David Farning	Carolyn & Tom Smith	Diane & Bill Tisue	Wayne Ledebuhr
Anne Marie &	Carolyn Warner	Diane & Duane Lambrecht	Gene & Sandra Dankbar
Keith Kramlinger	Catherine Marks	Diane & Jon Closson	George & Virginia Severson
Annette Evenson	Cathy & Thomas Alpizar	Diane & Norbert Lovstuen	Geri & Russ Farnsworth
Annic Miller	Chad Steinfeldt	Diane Cariveau	Gerri Nielsen
Annie Cady	Charles & Donna Briscoe	Diane Puntenney	Glencie Rhodas
Anonymous Donor	Cheryl & Bob Roediger	Dianne & Fred Schjolberg	Glenn & Leana Dixon
Arthid Brown	Cheryl Dornink	Dick Buggs	Glenn Klapperich
Arllys & Lorado Adelmann	Cheryl Watson	Dillon Denisen & Becky Trom	Gloria Hennessey
Arlyn & Connie Picken	Chris & Anna Hanson	Don Hoehn	Gloria Schad
Art & Mary Ann Ekern	Chris & Diane Johnson	Don Quiram	Gloria Schoenknecht
Arvid & Gaylene Mortensen	Chris & Jeff White	Donald A. Nelson	Gregg & Kathy Carlsen
Avis Jensen	Chris & Kacie Mixon	Donald Stover	Gregory Dawson
Barb & Don DeCramer	Chris Suby	Donna Scheck	Harald & Ann Lohn
Barb Burchill	Christiana Lundholm	Doris McFarlane	Harlan & Sonja Satrom
Barb Piper	Christine Mattison	Dorothy & Jerry Denisen	Harlan Nelson
Barbara & Joel Mielke	Christopher & Suzanne Colby	Dorothy Coons	Harriet Lawston
Barbara & Paul Klaas	Christopher Brauckman	Dorothy Evenson	Heather Tesoriero
Barbara Beck	Christopher Gerson	Doug & Diana Lawrence	Heidi & Eric Becker
Barbara Beeman	Chuck & Mary Phillips	Doug Schommer	Heidi & Larry Chladek
Barbara Knutsen	Cindy & Gage Andretta	Douglas Croucher	Heidi Ricks
Barbara Mahr	Cindy Weber	Douglas Tice	Helen Larson
Barbara Wright-Quarton	Claire Knocke	Drue Fergisn &	Helene Zinberg
Barton & Pam Seebach	Claire Seitzinger	Ralph Zerbe	Houston Dental
Bebe & Pete Keith	Connie Edwards	Dustin & Dominique Luecke	Howie Tobak
Ben & Mary Byker	Connie Minnick	Earl Hammell &	Ilene Edwards
Ben Gorman	Cory & Rachel Poncelet	Kris Anderson	Irene & Fred Green
Benjamin O'Konski	Craig Johnson	Ed & Barb Armbruster	Isabel Kramlinger
Benjamin Vander Kooi, Jr.	Curt & Beverly Proud	Ed Pfannkoch	Jack Uldrich
Beth & Rue Riley	Cynthia Fahser	Edith & Larry Langsev	Jackie & Tedd Johnson
Beth Hahne	Cynthia Halleen	Edward & Karel Moersfelder	Jackie Remery-Pearson
Beth Richardson	Cynthia Huggenvik	Edward LeVieux	Jackie Wolter Luna
Bethany & Robin Krom	Dale & Sonya Nimrod	Eileen Kuhnle	Jacklyn Johnson &
Bethany Werner	Dan & Jayme Nelson	Elaine Allen &	Jonathan Levine
Betty & Gary Pedersen	Dan & Maureen Anderson	Bryan Kingsriter	Jacqueline Kartman
Betty Bergsgaard	Dan & Vicki Anderson	Elaine & Harold Welda	James & Alice Leidel
Bill Knott	Dana Huschle & Reva Parker	Elaine & Robert Kirk	James & Nancy Reynolds
Blake & Caleb	Daniel & Brenda Rooney	Eliott Rustad	Jan & Gerald Nelson
Lauritsen-Norby	Daniel Stock & Megan Pence	Elise Gregory	Jane & Clifton Grevstad
Bob & Marilyn Larson	Daniel LaRocque	Elizabeth & James Fritz	Jane & Dennis Timmerman

DONORS — MORE PEOPLE WHO MAKE THE COMMONWEAL DREAM A REALITY

Jane Nelson
 Jane Peck
 Janet & Bob Calander
 Janet & John Johnson
 Janet & Tom Munger
 Janet Brauckman
 Janis & Rodney Tanner
 Jay Heiken
 Jay Hesley
 Jay Kobrigger
 Jean Allen
 Jean Selle
 Jeanne & David Cornish
 Jeanne & Jon Logelin
 Jeff & Dawn Thompson
 Jeff & Ollie Lepper
 Jeff Daood
 Jeff Ruehle
 Jeffrey & Angela Raddatz
 Jeffrey & Sara Staab
 Jeffrey Hatcher
 Jeffrey Bernardy
 Jenni Taggart
 Jennifer & Scott Wagner
 Jennifer Paloma Rafferty
 Jennifer Ryg
 Jerald & Terry Lichte-Molnar
 Jeremy DeGier
 Jeremy Lane
 Jeri Sebo
 Jerry & Su Ritter
 Jesse Labonne
 Jessica Michalski
 Jill Sicheneder
 Jillian Peltzman
 Jim & Dee Buchholz
 Jim & Elaine McNeil
 Jim & Monique Howe
 Jim & Sherry Oeltjenbruns
 Jo Marie Thompson &
 Robert Larson
 Jo Seton & Brad Wronski
 Joan Anderson
 Joan Laubenstein
 JoAnn & George Topness
 Joanne Broady
 Jody & Jay Myers
 Joe & Sheila Goetzke
 Joel & Brooke Pfeffer
 Joel & Kathryn Anderson
 John & Arlene Nelson
 John & Debbie Orenstein
 John & Karen Kristoff
 John & Kelly Vriezen
 John & Mary Wiater
 John & Rose Pederson
 John & Susan Eddy
 John Beatty
 John Bening
 John Dunleavy
 John Molseed
 Jolene Beddow
 Jon Anderson
 Jon Peterson
 Joseph & Joan Francois
 Joseph Gray
 Joseph Kalaidis
 Josiah Robinson
 Josie Papenfuss
 Joyce & Dennis Beekman
 Joyce & Drew Meyer
 Joyce Duede
 Joyce Pelnar
 Judith Bronson
 Judy & David Jacobson
 Judy & Dwight Boyum
 Judy Nelson
 Judy Trousdell
 Judy Wilder
 Julee Caspers Agar
 Julie & David Aanes
 Julie & Kevin Sutter
 Julie & Roger Deets
 Julie Aldrich
 June Torrison
 Karen Buggs
 Karen Greenslade
 Karen Heistand
 Karen L. Allen
 Karen Olson
 Kate Barr
 Kate Lamb
 Kate Martinson
 Kathleen Abrahamson
 Kathleen Lindblad
 Kathleen Quinn
 Kathryn & Stephen Struck
 Kathryn & Tom Rynders
 Kathy & Eric Thiss
 Kathy & Gary Huschle
 Kathy & Steve Delano
 Kathy & Tim Geisler
 Kathy Schoonhoven
 Katie Stodd Knapp
 Kay & George Spangler
 Kay Robinson
 Keith & Deborah House
 Keith & Jo Anne Agrimson
 Keith & Laney Lindor
 Keith & Natalee Johnson
 Kelli Venzke
 Ken & Gail Bittner
 Ken & Karen Bittner
 Ken Kidd
 Ken Nichols & Sharon Wonsil
 Kendra Weber
 Kent & Barbara Nelson
 Kent & Cindy Hofer
 Kent & Janice Johnson
 Kent & Karen Bonte
 Kent Swan
 Kevin Brinkmann
 Kevin Drake
 Kevin O'Brien
 Kim & Jean Pierre Menard
 Kimberly Hoffmann
 Kirby Bennett &
 Phil Losacker
 Kirsten Welge
 Krist Johnson
 Kristen Jacobs-Andresen
 Kristin Musselman
 Kristine & Michael Larson
 Kristine Claussen
 Kyle Swanson
 Larry Iverson
 Laura & Duane Hookom
 Laura & Kevin Horihan
 Laura Demuth
 Laura Tills
 Laurice Kneeskern
 Laurie & Joel Kramer
 Laurie Bryant
 Laurie Everitt
 Lawrence Kerzner
 LeAnn Bollum
 Leanna Rubin
 Lee Gundersheimer
 Leslie & Kevin Sand
 Leslie Levine
 Lester & Dianne Dunn
 Letitia & Glen Kopperud
 Liane Henkell
 Lilly & Mark Jensen
 Linda & Bradley Quarderer
 Linda & Dave Harvey
 Linda Curtis
 Linda Long
 Linda Watson
 Linnea & Tom Nicol
 Linnea Sodergren
 Lisa & Bret Klaehn
 Lisa & John Conzemius
 Lisa Pearson
 Liz Curran
 Lizzy Andretta
 Lois & Clarence Shub
 Lois Peterson
 Loren Baldus
 Lori Sims
 Lorraine Borowski
 Louanne O'Brien
 LouAnne Stabb
 Luann Wilcox
 Lynelle Osgood
 Lynn Krapf
 Lynn Lanners
 Lynne & Willard Jacobson
 Lynne Kirklin
 M. Robert Ayerhart
 Marcy & Tom Sherwood
 Maren Zincke
 Margaret Lambert
 Margaret Petersen
 Marianne & Harro Hohenner
 Marilyn & Ron Reis
 Marilyn Harstad
 Marilyn Schwab
 Mark Muggli &
 Carol Gilbertson
 Mark & Claire Dunn
 Mark & Gay Herzberg
 Mark & Ivy Pillers
 Mark & Jeanne Olson
 Mark & Kelly Baer
 Mark Dannenberg
 Mark Diez
 Mark Hamann
 Mark Miedtke
 Mark Nelson
 Mark Sampson
 Mark Schreiter
 Mark Weiers
 Marlene Michel
 Martha Baird
 Marty Schuster
 Marvin Grant &
 Carolyn Hensrud
 Mary Evans
 Mary Finnerty
 Mary Frantz
 Mary Hoffman
 Mary Jo Ellingson
 Mary Lee Eischen &
 Bob Stuber
 Mary Lillestol
 Mary Sack
 Mary Waudby
 Mary West
 Matthew & Karen Quanrud
 Maureen Johnson
 Meellee Fish
 Megan Hanks
 Melina Cohen
 Melonie Carstensen
 Merritt Olsen
 Michael & Kim Farber
 Michael & Moira Majerle
 Michael & Trudy Kamper
 Michael Austin
 Michael Bowler
 Michael Clemens
 Michael Hill
 Michelle & Matthew
 Moersfelder
 Michelle Barness
 Michelle Cochran
 Mike & Meg Hennessey
 Mike Lynn
 Mikey Cohen
 Mollie & John Theel
 Mullen Dowdal
 Muriel & Jim Pemble
 Nancy & Michael Stanek
 Nancy Brubaker
 Nancy Movall
 Nancy O'Reilly
 Nancy Toensing
 Naomi Craft
 Nathan & Denise Davidson
 Nathan Dungan &
 Susan Hawks
 Nathan Laubenstein &
 Heather Hanft
 Nathan Semsch
 Nathaniel Barmore
 Neal & Marie Buethe
 Nicole Pearson
 Nile & Jay Fellows
 Norah Bringer
 Norma Budzinski
 Owen Ziemer
 Pam Kopriwa-Barnes
 Pamela Flattum
 Pat & Joan Quinn
 Pat & Mark Anderson
 Pat Hinkie
 Pat Johnson
 Patricia & James McIntosh
 Patricia Carlberg
 Patricia Sample
 Patrick & Linda Smith
 Patti & Jerry Johnson
 Patty & Lu Paulson
 Patty Connelly
 Paul & Sue Anderson
 Paul Batalden
 Paul K. Schulte
 Paul Kiehne
 Paul Laplante
 Paul Stevens
 Paula Craig & John Lieske
 Pauline Christensen
 Peggy Hanson &
 Frank Wright
 Peter & Lisa Bakken
 Peter & Nancy Breyfogle
 Peter Borg
 Peter Moore
 Peter Seed
 Phil & Pam Iasevoli
 Phil Albu
 Phil Strom
 Preston & Connie Hollister
 Rachel Tichy
 Randy & Linda Prudoehl
 Randy & Sheryl Chapman
 Randy Schenkat
 Raymond & Judy Auger
 Rebecca Benson
 Reggie Shones
 Rev. Betsy Dartt
 Rich Brunner
 Rich Kasacek

DONORS — MORE PEOPLE WHO MAKE THE COMMONWEAL DREAM A REALITY

Richard & Carol Eick
Richard & Nancy Blum
Richard Dietman
Richard Gozia &
Elizabeth Holloway
Richard Kaiser
Rita Haugh
Robert & Bonnie Flom
Robert & Linda Railey
Robert & Lois Buntz
Robert Angelici
Robert Gaines
Robert Gardner
Robert Geraghty
Robert Lawson
Robert Todd
Roberta & Marvin Bringe
Roberta Peterson
Roger & Carolyn Greenlaw
Roger & Denise Ring
Roger & Emily Smith
Roger & Joyce Peckover
Roger Hegland
Romi & Mark Wilhelm
Ron Clark
Ronald & Kathy Jensen
Rose Johnson
Rose Olmsted
Rosemary Broughton
Rosie Thacher
Ruth & Phil Abrahamson
Ryan & Sara Kling-Punt
Sally & Morgan Ming
Sally Novak
Sandi Serdahl

Sandy Kiel
Sara & Stephen Galligan
Sara Pecor
Sara Templin
Sara Xavier
Sarah Crane
Scott & Elyse Hawthorne
Scott Roser &
Lyubov Slashcheva
Scott & Sarah Sailer
Scott Holtz
Scott Weber
Sean McCauley
Seth Jovaag
Seth Kaltwasser
Shannon Mastel
Shari Chamberlain
Sharon Price
Sharry Hebert
Sheila & Steve Arnold
Shelly Billiet
Sherry & Marc Nichols
Shirley & Rod Miller
Shreyasee Amin
Sonja Cook
Sonja Sola
Stan Peal & Laura Depta
Stan & Sharlene Milewsky
Stan Stern
Stef O'Keefe
Stephen & Cindy
Peterson-Wlonski
Stephen Carmichael &
Susan Stoddard
Stephen Houtz

Steve & Marlene Maloney
Steve Stricker
Steven & Jody Skolnick
Steven & Mary Jo Tittl
Steven & Nadeane Schossow
Steven & Sandra Hunt
Steven Brillhart
Steven Weekley
Stuart & Nikka Vrieze
Sue & Joe Banken
Sue & Tom Holst
Sue Carlson
Sue Stott
Susan & Bill Kling
Susan d'Autremont
Susan Scharmer
Suzan & Lee Gass
Suzanne Toce
Suzanne Young
Sven Neufeldt
Sydney Paredes
Tabitha Esbrook
Tamara Marks &
Bryn Geerdes
Tammy Moen
Ted Henry
Teresa Grossell
Terrence Sweeney
Terri Calvert
Terrisa & Bob Fisher
Therese Durkin
Thomas & Arlene Theye
Tim Lenartz
Timothy Mackey
Todd & Dianna Berry

Tom & Adele Greenlee
Tom & Elizabeth Baum
Tom & Joann Kujawa
Tom & Joann Van Meter
Tom & Julie Larson
Tom & Karen Lucy
Tom & Karen Vinson
Tom & Peg Pursell
Tom Cathcart & Karen Koch
Tom Muschler
Toni Carlstrom
Tony & Patrice
Vander Wielen
Traci Ledford
Tricia Baxter
Troy & Deann Underwood
Valerie Holcombe
VaLois Wilbur
Vangy & Carl Lundstrom
Velma Brant
Vern Riddle & Jennifer Wood
Verna Peterson
Vicki Donhowe
Virginia Aug
Walter & Susan Bradley
Warren & Donna Schimunek
Wayne & Joan Finnegan
Wayne Rendahl
Weldon Kuhn
William & Juanita McGregor
William & Judy Smithson
William & Meg Moellering
William Nelson

Peterson Creative

PHOTOGRAPHY & DESIGN

Beautiful
PORTRAIT ART FOR YOUR HOME.



SURROUND YOURSELF WITH THOSE YOU


Love.



CONTACT SARAH TODAY TO SCHEDULE YOUR SESSION.

Sarah Peterson, M. Photog., Certified Professional Photographer

WWW.PETERSONCREATIVEPHOTO.COM | 507.421.9906

 [petersoncreative](https://www.instagram.com/petersoncreative)  [petersoncreative](https://www.facebook.com/petersoncreative)  [petersoncreative](https://www.pinterest.com/petersoncreative)

FAMILIES | SENIOR YEAR | REUNIONS | CHILDREN