

I Ought to Be in Pictures

by Neil
Simon



**A POIGNANT
COMEDY**

APR 7 - JUL 2

PROFESSIONAL • LIVE • THEATRE

WEATHER YOU
TRUST



Welcome Back!

We hope that you, like our company, are feeling that we're emerging from what has been a particularly trying time, and you're ready to join in the celebration of our common humanity that this year's stories illuminate. Your presence is a gift for which we say thank you from the bottoms of our hearts.

WHY A DIGITAL PROGRAM?

By offering a digital program, we hope to reduce our carbon footprint and reduce printing costs. By using less paper, we reduce our carbon footprint and give you remote access to the program from anywhere. Also, without the space limitations of print, we look forward to adding more "bonus features"—such as extra articles and photos about each show—during the season.

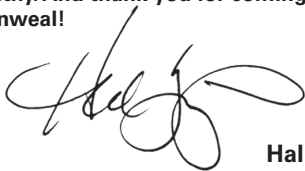
COVID-19 PROTOCOL UPDATE

We welcome and encourage the use of masks in our theatre. The Commonwealth, alongside its Board of Directors, will adjust protocols as conditions shift, particularly in terms of the CDC Community Level Guidelines for Fillmore County, Minnesota. The most up-to-date information is shared on our website. Thank you for your flexibility and effort in keeping our community safe.

LAND ACKNOWLEDGEMENT

We at the Commonwealth Theatre acknowledge that we work and gather on the ancestral lands of the Dakota Nation and other Indigenous peoples. We recognize these Nations as the original caretakers of this land and acknowledge the injustices committed against them. We strive to promote healing and inclusion through storytelling, which is fundamental to our mission.

We are eager to share these meaningful and entertaining stories with you. Please stay safe and healthy. And thank you for coming to the Commonwealth!



Hal Cropp
Producing Artistic Director

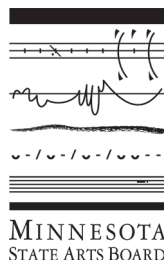


PROFESSIONAL • LIVE • THEATRE



The Commonwealth Theatre Company is a member of Minnesota Citizens for the Arts and a constituent member of Theatre Communications Group. Funding is provided in part by a grant from the Minnesota State Arts Board through an appropriation by the Minnesota State Legislature and by private funders.

**208 PARKWAY AVENUE N., P.O. Box 15
LANESBORO, MINNESOTA 55949
(800) 657-7025 • (507) 467-2525
COMMONWEALTHTHEATRE.ORG**



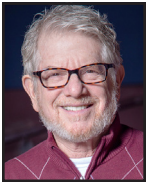
THE COMPANY



LIZZY ANDRETTA is in her sixth season at the Commonweal. She appeared in *Dancing Lessons* and *A Christmas Carol* last season and previously in *The Elephant Man*, *Putnam County Spelling Bee*, *Dracula: Prince of Blood*, *Boeing Boeing*, and *Sanders Family Christmas*, among others. Other Commonweal credits: *Root River Anthology*, *Headspace* and *A Driftless Christmas* as well as choreographing for several shows. Lizzy earned an M.F.A. in Acting from the East 15 Acting School in England and a B.S. from Skidmore College. Originally from New Jersey, she now lives in Lanesboro with her beloved cat, Henry.



STELA BURDT is grateful to celebrate her 23rd season with our Commonweal family. Past onstage work includes roles in *Souvenir*, *Woody Guthrie's American Song*, *Crimes of the Heart*, *Zombies from the Beyond*, *A Midnight Dreary*, *Harvey*, and *Man of La Mancha*. In addition to performing, Stela is a music director, sound designer, freelance vocalist, and the Commonweal's Patron Relations Manager. Currently, Stela is in the role of a lifetime as mom to Kieran. Love and Light, #TeamScottyForever.



HAL CROPP is in his 31st season, where favorite roles have been in *Come Back*, *Ghost-Writer*, *Dracula: Prince of Blood*, *Outside Mullingar*, *Sherlock Holmes: The Final Adventure*, *The Drawer Boy*, *To Kill a Mockingbird*, *Picasso at the Lapin Agile*, *A Christmas Carol*, *Groucho*, and *Talley's Folly*. Selected directing credits include *I Love To Eat*, *Headspace Theatre*, *Peter and the Starcatcher*, *Brand*, *Heartland Portrait*, *The Wild Duck*, *Measure For Measure*, *Peer Gynt*, *A Midnight Dreary*, *Enchanted April*, *Ghosts*, and *Little Shop of Horrors*. Hal holds a B.A. from Brown University, M.B.A. from Santa Clara University, and an M.F.A. from National Theater Conservatory. He was the Sally Irvine Award winner for Initiative, 2006.



Working to better our communities every day.

Creating thriving communities starts by helping you work toward your hopes and dreams. **Let's talk.**

(507) 467-2145 | merchantsbank.com
118 Parkway Avenue N, Lanesboro

Member FDIC



We're proud to support
the Commonweal Theatre.



ELIZABETH DUNN is in her eighth season with the Commonweal. Favorite credits include *Boeing Boeing*, *On the Verge*, *Scotland Road*, *The 25th Annual Putnam County Spelling Bee*, and *Dracula: Prince of Blood*. She has traveled in multiple tours with Prairie Fire Children's Theatre and lived in Chicago for a stint, where she studied improvisation at iO (formerly ImprovOlympic). Originally hailing from Georgia, Elizabeth is a 2010 graduate of Valdosta State University where she earned her B.F.A. in Theatre Arts.

KELSEY HEATHCOTE serves on the Commonweal's production team as the Technical Director and Assistant Production Manager. Since completing her apprenticeship in 2018, her work here has been seen onstage in several shows, including *The 25th Annual Putnam County Spelling Bee*, *Peter and the Starcatcher*, and *Bakersfield Mist*. In 2020, Kelsey designed the set, sound, and lighting for *Fully Committed* and was one of two audio engineers for *A Drifless Christmas*. She looks forward to many new and exciting challenges as we reopen our doors this year!



DAVID HENNESSEY serves on the development team and has played in more than 50 shows over 23 years, including *A Christmas Carol* last season. Other favorites: *Headspace Theatre*, *Holmes and Watson*, *It's a Wonderful Life: A Live Radio Play*, *The Drawer Boy*, and *The Rainmaker*. He designed costumes for *Ice Maidens* and *A Streetcar Named Desire*, oversees our audio descriptions for the visually impaired, and has led our COVID mitigation team since 2020. Other acting credits include *In Heart Theatre*, *Park Square Theatre*, *Jungle Theatre*, and *American Players Theatre*. He lives in Preston with Linda, his favorite scene partner for 49 years.



JACLYN JUNE JOHNSON joined the Commonweal at the start of 2020. An arts administrator, actor, director, playwright, costume designer, and teaching artist, Jaclyn has credits across the country, performing and designing with companies such as St. Croix Festival Theatre, Children's Theatre Madison, Creede Repertory, Riverside Shakespeare Festival, Riverside Theatre, Chicago's UTG Improv Theatre. Jaclyn received her B.A. from Cornell College. She wishes to thank: her family, friends, spouse, and their cats for their encouragement and love; and you for your support of the arts and specifically to the uniquely healing community of theatre.

RIVKA KELLY joined the Commonweal family in 2020 as the Production Stage Manager. Rivka hails from California but has spent the last decade as a traveling stage manager, mostly around the Midwest. Selected stage management experience includes shows with American Players Theatre, Milwaukee Repertory Theatre, Skylight Theatre, and Two Crows Theatre. Rivka received her B.A. from the University of Vermont. She's grateful for this welcoming community and her amazing family's support.

SEASON PASSES



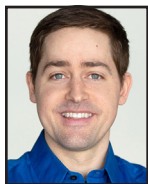
**See All 5 Shows
for only \$115!**

**Enjoy a year of professional
live theatre at **30% Off** the
regular adult ticket price!**

- Seating in advance
- Discounts for guests
- Friend Discount: see shows again for only \$15
- Discounts to special events



RACHEL KUHNLE returned to the Commonweal in 2018, seven years after completing her acting apprenticeship in which she performed in *Metamorphoses* and *To Kill a Mockingbird*. She was last seen on stage as June in *Sanders Family Christmas*, and directed last year's *Dancing Lessons*. Rachel completed her M.F.A. in acting at the University of South Carolina in 2017. She loves her cats, her baby, and is grateful to her husband, Josiah, for being awesome.



JOSIAH LAUBENSTEIN joined the Commonweal late in 2018. He is the resident videographer and most recently appeared in *Dancing Lessons*. Before moving here, Josiah worked at Festival Theatre in St. Croix Falls, WI, as Marketing Director, and acted in nine productions over two years. Prior to that, Josiah lived in Columbia, SC, where he earned his M.F.A. in acting from the University of South Carolina. Josiah is a proud member of Glassbox Theatre Group, a co-founder of Highway Walkers Media Company, and is happily married to Rachel Kuhnle. He is besotted with their first child, Franny.



BRANDT ROBERTS is in his ninth season at the Commonweal. Favorite roles include Robert in *Boeing Boeing*, John Merrick in *The Elephant Man*, Mr. Coffee in *On the Verge*, Ragnar Brovik in *The Master Builder*, and Fancourt Babberley in *Charley's Aunt*. Cherished regional credits include *Measure for Measure* and *Henry IV Part I* at the Shakespeare Theatre of New Jersey. Brandt's original one-person show, *The Art of the Entertainer*, has been performed in several states and was adapted into an online presentation in 2020. Roberts holds a M.F.A. in Performing Arts from the Savannah College of Art and Design.

JODI RUSHING is in their fourth season at the Commonweal. Their favorite credits include *An Iliad* (Wealhouse), *On The Verge*, *I Love To Eat*, and *The Complete Works of William Shakespeare (Abgd.)(Rvsd.)*. Before their tech apprenticeship with the Commonweal in 2019, they stage managed for Doniphan Dance Project in Tupelo, MS, and served as the conference manager for the 2019 ACDA South Conference. Jodi holds a B.A. in Theatre and Film from the U. of Mississippi.



TIM SAILER started at the Commonweal as an apprentice in 2009 and is now in his fifth season with the company. He appeared in *A Christmas Carol*, *The Rainmaker*, *Picasso at the Lapin Agile*, and *An Enemy of the People*. Other Minnesota work includes performances at Park Square Theatre, Theatre L'Homme Dieu, and the Orchard Theater Collective. He spent five years with the American Shakespeare Center (Staunton, VA), where he played more than 50 roles in 35 plays. Other regional work: UT Shakespeare Festival, TX Shakespeare Festival, Houston Shakespeare Festival, and AR Shakespeare Theatre. Tim holds an M.F.A. from the University of Houston and is also an audiobook narrator.



Looking Forward
to a Great
2022 Season

Local Design Talent
Proudly Supporting
Local Professional
Theatre



211 11th avenue nw, rochester, mn 55901

507.206.6201



ADRIENNE SWEENEY is grateful to be in her 22nd season with the Commonweal, serving as the Assoc. Art. Dir. and Dir. of External Relations in addition to artistic roles. From Philadelphia, she holds an M.F.A. in Acting from the U/AZ. A commercial voice talent, she can be heard regionally on radio and TV. Favorite shows here include last season's *A Christmas Carol*, in which she had the great fortune to play Scrooge. Other favorites: *Silent Sky* (director), *Boeing Boeing*, *Steel Magnolias*, *Outside Mullingar*, and *Sylvia*. Adrienne believes that the act of sitting together in the dark sharing stories can help bring light to the world, something we all crave now more than ever. She looks forward to sharing time and space with you.



JEREMY VAN METER is enjoying his eleventh season in residence at the Commonweal. Favorite credits here include C.K. Dexter Haven in *The Philadelphia Story*, Anthony Reilly in *Outside Mullingar* and the title role in *Dracula: Prince of Blood* by Scott Dixon. His professional career began at The Barter Theatre in Virginia, and he has appeared regionally at Riverside Theatre, Illinois Shakespeare Festival, and Great River Shakespeare Festival. Jeremy holds an M.F.A. in Acting from the U. of Iowa and makes his home in Lanesboro with his lovely and extremely talented wife, Catherine Glynn.

LOCAL FOOD • DOWNTOWN LANESBORO















www.pedalpusherscafe.com | 507-467-1050

NIAGARA CAVE

Nationally recognized among best U.S. caves
One of "Ten Most Incredible Natural Wonders in MN"

Harmony MN

- underground waterfall
- stalactites & stalagmites
- 1-hour guided tour
- ancient fossils
- gemstone mining
- 18-hole mini golf

Voted
BEST
Family
Destination
2009-2015

Niagara Cave

★ 2 miles 30

(507) 886-6606
www.niagaracave.com

Amish Tours of Harmony

In the Sugar Plum House on the Village Green & 45 Main Ave. N., Harmony, MN

Experience a Lifestyle...

- where horse & buggy still provide the transportation
- the home is lighted by kerosene lamps
- water is heated on a woodburning stove

Enjoy an exciting tour with one of our knowledgeable guides

- Mini Bus Tours
- Car Tours
- Group Bus Tours
- Spring through Fall
- No Sunday Tours



For Advance Tickets & Information
(507) 886-2303
www.amish-tours.com



Lori & Oakley

GRANNY'S

LIQUOR

COME IN AN LET *Oakley*
HELP YOU SELECT A TASTY CHOICE!

Open 7 Days!

(507) 467-2700 • 113 Parkway Ave, Lanesboro

www.grannysliquor.com

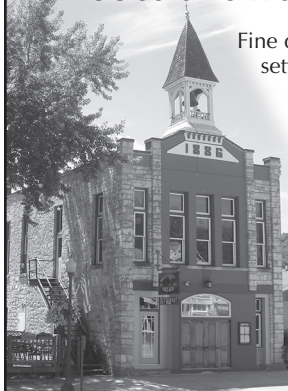
**ORGANIC
COFFEE**

Parkway Market & Coffeehouse

--Open Daily--

Corner of Coffee Street & Parkway Avenue

Old Village Hall Restaurant & Pub



Fine dining in a casual setting. On the deck or in the upstairs dining room.

**Wine Spectator
Award of Excellence**

**Reservations
Recommended**

(507) 467-2962

**111 Coffee Street
Lanesboro**

**www.
oldvillagehall.com**

Selling Fat Cattle Market Cows & Bulls

Wednesday Auctions at 8:30 AM

Selling all classes Livestock

Friday Auctions at 10:30 AM

**Special Feeder Cattle & Bred Cow Auctions
Scheduled thru the Fall & Winter**

Joe Nelson, Owner Cell: 507-450-6763 Barn: 507-467-2192

402 Coffee St E, Lanesboro, MN 55949 • LanesboroSalesCommission.com



**Stop in for breakfast or lunch at the
Stockyard Cafe! Open on sale days.**

Minnesota
Lanesboro

"Your Community Banks for Generations."

Fountain, MN
(507) 268-4321
www.fsbfountain.com

FSB
ountain



R
Root River
—STATE BANK—
CHATFIELD MN

Chatfield, MN

(507) 867-4120

www.rsbchatfield.com

YOU BE JUDGE
 THE
HIGH COURT PUB
 CRAFT
 COCKTAILS • FOOD • BEER



Open Late After the Show
Bring your ticket stub in for \$1 off!

Two Decks • Live Music
Trivia Tues & Open Mic Thurs 7:30 pm

highcourtpub.com 507.467.2782
109 Parkway Lanesboro, MN

F&M *Community* BANK

WE MAKE
BANKING
EASY![®]

Personal Banking
Business Banking
Mortgage Lending
Certificates of Deposit
Online Bill Pay
Remote Deposit Capture

FMCOMMUNITY.com



PROUDLY
SERVING

PRESTON

CHATFIELD

ROCHESTER

SINCE 1911

Member
FDIC



PROUDLY
INSURING

LIFE & HEALTH
HOME
AUTO
BUSINESS
FARM

SINCE 1911



WE MAKE
INSURANCE
EASY![®]

F&M **INSURANCE**
SERVICES

Service *You* Can Count On

100 Saint Anthony St. N. • 507.765.3387

RRIns@FMcommunity.com

Auto-Owners
INSURANCE

LIFE • HOME • CAR • BUSINESS

www.dragonflybooks.com

GET A BOOK BUZZ...



DRAGONFLY
BOOKS

...and fly beyond your imagination
at Dragonfly Books.

Kate Rattenborg, Bookseller.

563-382-4275 • 112 West Water Street
Decorah • info@dragonflybooks.com

Blue Heron Knittery

Purveyor of fine yarns, knitting & crocheting
supplies, books & patterns



**CALL
AHEAD**
for
Current
Hours

www.BlueHeronKnittery.com

300 W. Water, Decorah, IA • (563) 517-1059

GROCERY
BULK
PRODUCE
DELI
CHEESE
MEAT
BAKERY
WINE/BEER
SUPPLEMENTS
BODY CARE

COOPERATIVELY OWNED.

Specializing in organic & locally grown.



**ONEOTA
COMMUNITY
FOOD
COOPERATIVE**
decorah, iowa

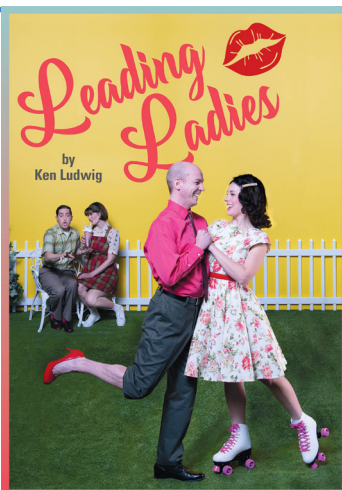
312 West Water Street, Decorah • 563.382.4666 • www.oneotacoop.com • Open 9:00 am to 7:00 pm daily

EVERYONE CAN SHOP • EVERYONE WELCOME • NO MEMBERSHIP REQUIRED

Be sure not to miss...

**A SPARKLING
SCREWBALL
COMEDY**

MAY 14 - AUG 27



101.1 THE RIVER

WINONA'S GREATEST HITS

LISTEN ONLINE AT WINONARADIO.COM
OR ON OUR NEW MOBILE APP



Download on the
App Store



GET IT ON
Google Play

ROCHESTER REP THEATRE

www.rochesterrep.org

La Crosse Symphony Orchestra

2022-2023 SEASON

SOMETHING TO *Believe in*

Bringing you a season of refreshing movements that bring joy and sweetness.

order your season tickets today at lacrossesymphony.org



SPRING 2022 PRODUCTIONS



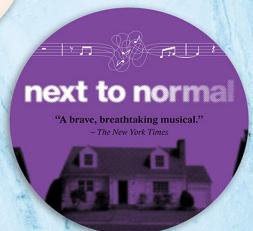
March 20, 2022



April 1-10, 2022



April 16, 2022



April 29-May 15, 2022

ABOUT THE PLAYWRIGHT



Marvin Neil Simon (1927-2018) was an American playwright, screenwriter, and author. He wrote more than 30 plays and nearly the same number of movie screenplays, mostly film adaptations of his plays. He has received more combined Oscar and Tony Award nominations than any other writer. Simon grew up in New York City during the Great Depression. He enjoyed watching early movie comedians like Charlie Chaplin. After graduating from high school and serving a few years in the Army Air Force Reserve, he began writing comedy scripts for

radio programs and popular early television shows, including Sid Caesar's *Your Show of Shows* where, in 1950, he worked alongside other young writers including Carl Reiner, Mel Brooks, Woody Allen, Larry Gelbart, and Selma Diamond.

His first produced play was *Come Blow Your Horn* (1961). It took him three years to complete and ran for 678 performances on Broadway. It was followed by two more successes: *Barefoot in the Park* (1963) and *The Odd Couple* (1965). He won a Tony Award for the latter. It made him a national celebrity and "the hottest new playwright on Broadway." From the 1960s to the 1980s, he wrote for stage and screen, including adaptations of his own plays. His style ranged from farce to romantic comedy to more serious dramatic comedy. Overall, he garnered 17 Tony nominations and won three awards. In 1966, he had four successful productions running on Broadway at the same time, and in 1983 he became the only living playwright to have a New York theatre, the Neil Simon Theatre, named in his honor.



No radio? No problem!

Find us on Facebook, Twitter and at wpr.org.



WISCONSIN
PUBLIC RADIO



ASK AT THE BOX OFFICE ABOUT OUR ASSISTED-LISTENING DEVICES, SPECIAL SEATING FOR THOSE WITH MOBILITY IMPAIRMENTS, ASL-INTERPRETED PERFORMANCES AND VISUAL DESCRIPTION FOR THE SIGHT-IMPAIRED.

I Ought to Be in Pictures

by Neil Simon

Director	Adrienne Sweeney
Stage Manager	Kelsey Heathcote
Scenic Designer	Justin Hooper
Lighting Designer	Thomas White
Costume Designer	Jaclyn June Johnson
Sound Designer	Josiah Laubenstein
Dialect Coach	Hal Cropp
Props Designers	Brandt Roberts, Elizabeth Dunn

CAST

Steffy	Betti Battocletti
Libby	Grace Cummings
Herb	Jeremy van Meter

Setting

Los Angeles, 1979.

Runtime is approximately 2½ hours, with one 15-minute intermission.

I OUGHT TO BE IN PICTURES is presented by arrangement with Concord Theatricals on behalf of Samuel French, Inc.
www.concordtheatricals.com

Sponsor:

Media Partner:



WISCONSIN
PUBLIC RADIO

women
rochester

NOTES FROM THE DIRECTOR



The father-daughter relationship has always tugged at me. My parents separated when I was 2½, after which my dad and I had what could be called a “Sunday Relationship.” As these were the days before co-parenting, nesting, and joint custody, my dad would pick me up after Mass, head to my grandparents’ house for family dinner, and return me before dark. Over the years, my father’s mental and physical health declined dramatically and our visits became fewer and farther between. He’d fall off the grid for months at a time and eventually our relationship evaporated. In my mid-twenties I realized his health could not hold out forever, and I decided to visit him when I was home for the Christmas holiday. He passed away December 2nd. I never got that chance.

I Ought to Be in Pictures offers the opportunity to reflect on the relationships in our lives—the successful and the failed—and encourages us to consider the possibility of second chances. It reminds us of the power of courage. And it does so through the uniquely humorous yet heartwarming words of one of America’s greatest playwrights. I hope you enjoy your time with Libby, Herb, and Steffy as much as I did. This one is in memory of my dad, Francis J. Sweeney.

—Adrienne Sweeney

ALSO FEATURING



Betti Battocletti (Steffi) has performed at the Commonweal in roles that include Christmas Present in *A Christmas Carol*, Vera in *Sanders Family Christmas*, Mary in *On the Verge*, Virginia in *The Clean House*, Rona in *The 25th Annual Putnam County Spelling Bee*, and Clairee in *Steel Magnolias*. Other favorite credits include *Always...Patsy Cline*, *The World Goes Round* and *Urinetown* at The Jungle Theater in Mpls; *42nd Street*, *Prisoner of Second Avenue*, and as Cassie in *A Chorus Line* at Artistry. She is also a lyricist, playwright, choreographer and owns Bodiology Pilates in Minnetonka, MN.

Justin Hooper (Scenic Designer) holds a B.A. in Theatre from Augsburg College, where he minored in English and Dramaturgy. He began his professional career as a stage manager for Glimmerglass Opera in Cooperstown, NY. He survived two seasons but succumbed to homesickness, returning to Minneapolis to become a scenic artist for the Guthrie. Later, he took side-gigs as History Theater's technical director, Pioneer Place's production manager, and an audio-visual technician for AVEX. He has designed scenery (and occasionally lighting) for myriad Twin Cities companies and has branched into the world of interior design—his portfolio includes two restaurants, a liquor store, and a brew pub. He is currently the technical director for Concordia University's Theatre Department in St. Paul.

Thomas White (Lighting Designer). Working again with his Commonweal family, Thomas is incredibly grateful that The Commonweal supported him through COVID and 2020. His day job involves daily deliveries of 900 gallons of milk from Hansen's Dairy to happy people. In his spare time, he consults on technical matters for local and regional theater. Originally from Ames, Iowa, Thomas was the resident lighting designer for the Oster Regent Theatre in Cedar Falls while earning a B.A. in technical theater from the U. of Northern Iowa. Thomas is a founding member of Sissy's Circus, a burlesque troupe that pushes the boundaries of gender identity and sexuality through drag, dance, and theatre. His professional experience also includes work with the Colorado Shakespeare Festival and the Telluride Film Festival. It's great to be back in Lanesboro.

SPECIAL THANKS

Festival Theatre: Kim Murphy; Terry Neneman, Cami Fuller, Jody Slominski, Stacey Schultz, Desiree Borth-Ferrie, Elizabeth Biel; St. Mary's University: Anastasia Goodwin.

2022 Awaits You

I Ought to Be in Pictures

by Neil Simon | APR-JUL

Leading Ladies

by Ken Ludwig | MAY-AUG

The Mystery of Edwin Drood

by Rupert Holmes | JUL-OCT

Good People

by David Lindsay-Abaire | SEP-NOV

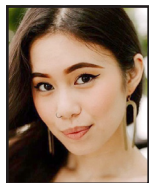
Alice in Winter Wonderland

by Janet Allard & Michael Bigelow Dixon | NOV-DEC



APPRENTICE CLASS OF 2023

Happily, Commonweal has resumed our Apprenticeship Program this year. This 10-12-month, fully immersive, live-work program affords unique opportunities for young theatre professionals to study the craft & business of making live theatre. Learn more on our [website](#).



MARIA CINA is overflowing with gratitude for the opportunity to work with and learn from such a fantastic family of artists. She is honored to be a part of Commonweal Theatre's Apprenticeship class and hopes you enjoy the show! Maria earned her A.A. in Commercial Photography from Madison College (WI) and her Acting Certificate from The Gaiety School of Acting in Dublin, Ireland. She is currently on hiatus from studying Theatre Arts and Communication Studies at the U/MN Twin Cities, with plans to resume post-apprenticeship. Credits include Morticia Addams in *The Addams Family Musical*, Kendra in *The Gulf*, Asst.

Stage Manager for *Romeo and Juliet*, and U/S Marnie for *Lewiston/Clarkston*. When not on stage, Maria can be found sipping tea and cuddling her cat, Knives Meow, in a sunny corner of the apartment, a fantasy novel close by. She sends love, hugs, and pinky promises to all her friends and family. instagram: @mariashe_



GRACE CUMMINGS has been acting and performing for almost a decade. She started in Monroe, LA, at Strauss Youth Academy for the Arts. Then she moved to Natchitoches to join Northwestern State U's Theatre & Dance program, and to participate in the LA Scholars' College. Her philosophy as an artist is simple: art is about connection. No matter if she is writing, acting, singing, or painting, she aims to use her art to connect with those around her. Her one goal onstage is to tell a story that will not only connect her with her audience, but also with herself.

Some roles include Elizabeth Proctor in *The Crucible*, Olivia in *Twelfth Night*, Prospero in *The Tempest*, and Deb in *Ordinary Days*. She was also able to debut two original roles, one written by the award-winning Del Shores, in *In Memoriam of Lena* as Julia, and one written by herself, in *Emilia* as Emilia Bassano. This Louisiana girl is excited to be joining Commonweal as an apprentice while getting to make new friendships and explore Minnesota!

SARA HUESER serves as the technical Apprentice for the 2023 season. Favorite credits include *The Wild Party*, *My Way*, and *The Other Place*. She has spent many seasons in Savannah, GA, and Greenville, SC, working on shows. Originally from Pennsylvania, Sara holds a bachelor's in Computer Engineering and a B.F.A. in Dramatic Writing from Savannah College of Art and Design.



JOHN B. NICOL is incredibly excited to be returning to the theatre scene as an acting apprentice with the Commonweal. Born and raised in community theatres around Northeastern IA, he went on to receive his B.S. in Theatre Arts from MN State Mankato. While there he had the opportunity to play some fun roles including Matt Friedman in *Talley's Folly*, and Smee in *Peter and the Starcatcher*. In regional theatres, he had fun playing Willard Hewitt in *Footloose* at the Paul Bunyan Playhouse and Demetrius in *A Midsummer Night's Dream* with Free to the People Theatre.



TANNER SABOL is thrilled to join the Commonweal Theatre for the first time! Growing up in Sioux Falls, SD, and graduating with a B.F.A. in musical theatre from the U. of North Dakota, he initially began acting in high school, being a part of the Oral Interpretation team all four years. Since then, he has played roles such as Felix in *The Odd Couple*, Sweeney in *Sweeney Todd*, Richard Hannay in *The 39 Steps*, and was also a performer in the American College Theatre Festival's 2020 Cabaret. He hopes to find another home away from home at the CTC!



ALEX SCHLESINGER is ecstatic to be making their professional acting debut on the Commonweal Theatre's stage. Alex graduated from Luther College in 2021 with a B.A. in Theatre, and they are delighted to join the Commonweal's apprentice class this year. Favorite roles include Riff Raff in *The Rocky Horror Show*, Florizell in *The Winter's Tale*, and Amos Hart in *Chicago*. Alex would like to thank their mentor, professor, and good friend Jeff Dintaman for his years of support and sharing of knowledge that got Alex to where they are today.

HALF THE \$KY

Saturday, May 7 @ 7:30

Christ United Methodist Church, Rochester

According to a Chinese aphorism, "women hold up half the sky." We are all blessed when our community and our world work to unleash everyone's full potential.

Rochester Mayor Kim Norton will be our special guest along with a representative from the Jeremiah Program. The concert will feature music by women composers as we celebrate women in our community.

Tickets & more info at
www.ChoralArtsEnsemble.org



2022 SEASON
JUN 18-JUL 31

**GREAT RIVER
SHAKESPEARE
FESTIVAL**
WINONA, MN



TICKETS: GRSF.ORG | 507.474.7900

2022 Season Artwork by Maggie Panetta @maggie_designss



LANESBORO ARTS



Galleries

year-round exhibitions

Rhythms on the Root

outdoor summer music

Art in the Park

Saturday, June 18, 2022

Arts Campus

public art & education

St. Mane Theatre

music, theater, dance, and more

lanesboroarts.org // 507-467-2446

We Can't Do This Without You

For 34 Seasons

the Commonwealth has been inspiring hearts, minds and souls. It would be easy to believe that these marvelous stories have come about because of the hundreds of talented artists who have called the Commonwealth home.

Easy, but far from the truth. The real heroes who make up this company are you, our audience and loyal supporters.

But your tickets only cover half of what it costs to create live, professional theater. For us to continue bringing theater magic to you and future generations, please consider a gift in support of our mission "to enrich the common good."



Here's How You Can Help:

MDC

"When the MDC was initiated, we immediately joined. This level of giving helps ensure a solid financial base for the organization to meet their annual expenses while planning for the future. We encourage you to join us in supporting the Commonwealth, so we all can continue to enjoy the wonderful productions we have come to treasure."

—Jon & Mary Hart

The heart of our giving programs, the **MDC** consists of individuals and households who make a non-binding, 10-year commitment of support. For a schedule of amounts and benefits, please see any staff member or visit the "donate" page on our website: www.commonwealththeatre.org

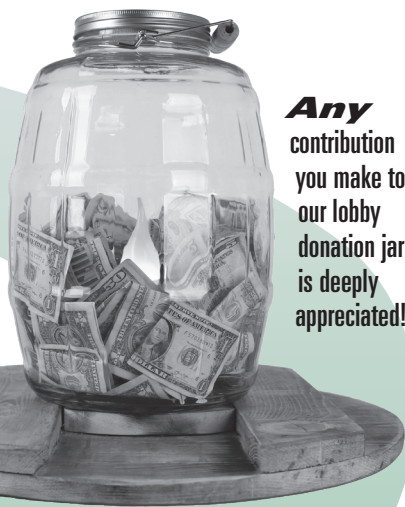
Planned Giving



"By including Commonwealth in our estate plan, we feel good knowing that we'll be helping to ensure that this gem will be here for future generations."

—Ken & Sally Mogren,
Winona, MN

Please consider remembering the Commonwealth Theatre in your planned giving. Visit our website at <https://commonwealththeatre.org/support/planned-giving/> for more information.



Any contribution you make to our lobby donation jar is deeply appreciated!

Sponsorships & Underwriting

There are myriad ways that you can play a starring role in supporting one of our mainstage shows, or even the entire season! Through these partnerships, we can maintain a high standard of artistic excellence while providing greater access to all.

Sponsorship comes with its rewards. To learn about sponsorship or underwriting opportunities, including recognition and benefits, contact **Hal Cropp** at hal@commonwealththeatre.org, or (507) 467-2905 X203 or visit: www.commonwealththeatre.org/donate/

DONORS

THE PEOPLE WHO MAKE THE COMMONWEAL DREAM A REALITY

Here are all ongoing MDC pledges and all memorials made from **January 1, 2021, to February 15, 2022**. Due to space limitations, we cannot list all our donors here. Please find them on our website, www.CommonwealTheatre.org. For information on all our individual donor programs, contact **Jeremy van Meter: 507-467-2905 ext.211, jeremyvm@commonwealtheatre.org**

INSTITUTIONAL DONORS IN 2021

McKnight Foundation
Minnesota State Arts Board

THE MDC

Our MDC members are the lifeblood of the Commonwealth. **Members donate annually** through their long-term pledges and receive unlimited admission, priority seating and more. *Heartfelt thanks* to these generous people—without them, we would not be here!

\$2,000+ per year

Fastenal Company
F&M Community Bank
Bob Kierlin & Mary Burrichter

\$1,000-\$1,999 per year

David & Candace Arp
Bruce & Pauline Bailey
David Bange
Stephen & Martha Bartenhagen
Kenneth Baughman & Leandra Sunseri
Sheri Borchering
in memory of Jack Michael Bostwick & Connie Williams
Merri Bremer & Scott Koon
Michael & Char Brown
Dan Christianson
Hal Cropp & Adrienne Sweeney
Jon & Chris DeVries
Phil & Heidi Dybing+
Ron & Rae Evenson
Laura & George Fix
Michael & Elaine Edwards
% Habberstad House
Bed & Breakfast
Jon & Mary Hart
Carol Heyl
Willa & Dave Holger
Craig & Tracy Hurley
Barbara Jackman
Robert & Renee Jacobson
Bill & Lisa Kelly
Lou & Maureen Guillou
David & Gail Judisch
Mark & Kris Litzow
Lee & Ione Loersch
Merchants Bank
Eric & Andrea Miehlisch

Chris Miller & Hank Taxis
Gail & Phillip Minerich
Ken and Sally Mogren+
John & Lynne Munter
Kurt Neuenfeld & David Watson
Ted Olson
Scott & Angie Taylor %
Pedal Pushers Café
Rob & Patty Porter
Kent & Juanita Ruby
Charles Ruen
David & Joan Ruen
Richard Rundle
Dale & Sue Scobie
Jim Sheeley
Julie & David Warner
Christopher & Nina Wendt

\$500-\$999 per year

Barb Soma
% Amish Experience
Alan Bailey
Duane & Angel Bakke
Barb & Larry Berge
Michael Bigelow Dixon
Scott & Karen Bingham %
Thrivent Financial
David Boen
Terry & Renae Boydston
Barb Soma % E2 Boutique
Heide Buettner
Joseph & Sarah Chase
Carol & Sheldon Clay
Bob & Alice Johnson
David & Karen Danielson
Linda & David Hennessey
Leslie & Jo Hittner
Keith & Debbie House
Jane B. Jamison
Kapp Kapter & Maureen Jameson
Minette & Paul Johnson
Susan & Lyle Klug
Kurt & Ann Knodel
Rayson Lorrey & Wei-Lin Jung
Dr. Thomas & Leone Mauszycki
Jon & Sarah Pieper % Old Village Hall Restaurant
LeAnn & Gary Olson
Glennice Rhodas
Jane Ryan
Carl Sandquist
Kevin & Leela Scattum
Chris & Mary Schmidt
David & Darlene Shaw
Daryl & Michele Thompson
Violet Walk

\$250-\$499 per year

American Legion
Post #40 Lanesboro

Blake & Beth Abdella
Mimi Abell
Zoe Abrahamson
Laura Adamson
Janey Afseth & Dwight Scrabeck
Shirley & Mark Ahlquist
Jane Ahlstrom
Bari & Peter Amadio
Drs. John Boeker & Dory Gardner %
Amethyst Dental Care
Harold & Angie Amsbaugh
Horace J. & Rose Andersen
Mary Anne Anderson & June Kazel
Asahi Loft of Harmony
Charles & Vonnie Aug
Jerry & JoAnn Aulwes
David & Lori Bakke %
Granny's Liquor
Russell & Cathryn Baldner
Joe & Sue Banken
Diane & David Banner
Carolyn & Roger Barsness
Dave Beal & Carol Berteotti
Becky Becker
Kathryn & Brad Benke
Harvey Benson & Bonita Underbakke
Judi & Dick Bergen
Gene & Renee Bergstrom
Andrew & Anita Bisek
JoEllen & Dean Blegen
Michaelaen Bonner & Scott Gottfried
Donald & Pat Borcharding
Craig & Nina Bren
Ann Brice & Bill Haviland
Kathryn Burch
Stela Burdt
William & Diane Burdt
Philip Burkholder
Jim, Kathy, Aaron & Colin Buzza
CRW architecture + design group
Charlotte & James Carey
David & Brenda Carlson
Paul & Bridget Carns
Elaine Case & Bill Wiktor
John & Sandra Castek
David Cavagnaro
Ron & Nancy Christensen
John & Birgitte Christianson
Dr. Keith & Kathy Churchill
John & Jane Ciecko
George Cipov
Margaret & Neil Claus
Glee & Gordon Claussen
Gerald Clymer & Ardy Olds
Richard & JoAnn Cole
Debra Collum

Duane & Sonja Cook
Jim & Pat Cooper
Jeff & Lavon Court
Carlo Cuesta & Dana Gillespie
Jerry & Dottie Dallmann
Larry & Betty Danielson
Norman & Janette Decker
Joe Deden & Mary Bell
Bob Ditsch
Allen & Marcia Dollerschell
David Drury
Joseph & Lois Duffy
Carol & Mary Eggert
Henry & Carol Elwood
Hisako Y. and Dale Eppen
Herb Erickson & Helen Kolb
Pastors Kerry Eversole & Cindy Cordes-Eversole
Phil & Barbara Feiten
Leland & Jeanne Ferden
Carmen Fingerson
Anne Flynn & Jon Buggs
Dennis & Nancy Forsyth
Ted & Cindy Frana
Jill Frieders
Michael Fritzsche & Anne Beighley
Dick & Marge Fuller
John Gaddo & Nancy North
Tom & Lynne Gaffey
Jim & Carla Gallina
Shirley Gangstad
Gary & Elaine Gassett
William & Laura Gentry
Bonnie Gibson & Gretchen Schade
Bill & Sarah Goff
Alan Goldberg & Kay Udey
Jackie Rehm %
Green Gables Inn
Sandra & Joel Grettenberg
Martha & Jim Griesheimer
Dale & Beth Haaland
Paul & Louanne Hamann %
High Court Pub
Richard & Diane Haight
Janet & Dennis Haller
Robyn Hansen
Chris & Jessica Hanson
Peggy Hanson & Frank Wright
Bill & Eileen Harguth
Dr. Gary & Jean Hayes
Janice Heikes & Lee Zook
Paul & Jessica Hemenway
Beth Hennessy & Tom Barnes
Marian Maciej-Hiner
Betsy Holbrook & Dona Conway
Marilyn Holland
Dick & Bette Houtkooper
Linda Hyde
Jim & Becky Iverson

COMMONWEAL THEATRE LEGACY SOCIETY

+ Indicates members.

Please consider the Commonwealth in your estate planning.

Contact Jeremy van Meter about this or any of our donor programs: (507) 467-2905 ext.211
jeremyvm@commonwealtheatre.org

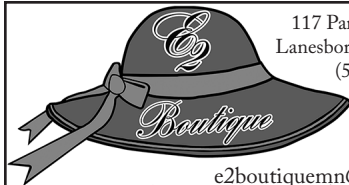
JuliaClaire Consignment & Variety



152 Main St. • Preston • 507-765-2399

- Quality clothing for the entire family
- Fashion accessories & Jewelry
- Books, Games & Videos
- Housewares & Home Accessories

www.facebook.com/affordableclothingprestonmn



117 Parkway Ave. N.
Lanesboro, MN 55949
(507) 467-2994

e2boutiquemn@gmail.com

Oakenwald Terrace

SOUTHERN MINNESOTA'S
PREMIER BED &
BREAKFAST

218 Winona St.
Chatfield, MN
(507) 867-3806

www.OakenwaldTerrace.com



AMISH EXPERIENCE



Gift Shop featuring locally handcrafted Amish Quilts,
Baskets & Furniture; Collectibles; Home Decor;
Garden Accents; & Specialty Foods

visit our Online Store

www.village-depot.com

105 Parkway Ave. N. • Lanesboro, MN 55949 • 507-467-2992

GREEN GABLES INN

15 Modern Rooms

- Bridal Suite
- Fireplace & Whirlpool
- Smoke-free
- Open All Year

Hwy 16 West, Lanesboro, MN

Modern Convenience in a Quaint Country Setting

800-818-GABLES (4225) 507-467-2936

green@acegroup.cc

www.lanesboroweb.com/greengables

HABBERSTAD HOUSE BED AND BREAKFAST



A relaxing retreat

HABBERSTADHOUSE.COM | 507-467-3560

Health Through Chiropractic

OFFICE HOURS

M,T,W,F:
9AM-6PM

Thursday:
Closed

River Hills Chiropractic



102 W. Sheridan St.
Lanesboro, MN 55949

507-467-2629 (24-hr. call 507-450-2466)

Scandinavian Inn



A Bed & Breakfast in Lanesboro

Like theater? You'll love our
Mystery Nights! • 507-467-4500

www.scandinavianinn.com

507-467-8663 STONE MILL HOTEL & SUITES

Historic Lanesboro, Minnesota



WWW.STONEMILLSUITES.COM

1/2 block from the theatre.

A lovely drive just minutes
from Lanesboro on the
National Scenic Byway
Route 16 & located beside the

Root River 
State Bike Trail

LOKEN'S RUSHFORD INN

rushfordinn.com 507-864-2222

Visit the VALLEY

Rushford Peterson Valley, a hidden gem in scenic bluff country with space to breathe and explore! Located 14 miles east of Lanesboro on scenic Highway 16.

THINGS TO DO

Experience bluff country by trail or water!

- Root River Bike Trail: 60 miles of paved trail
- Bluff Country Scenic Byway
- Root River fishing, tubing, canoeing

PLACES TO STAY

- Inns, campgrounds, vacation rentals

PLACES TO EAT

- Many local favorites

PLACES TO SHOP

- Basic necessities or items unique to the Valley



take root

Rushford Peterson Valley
MINNESOTA

Find us online for a full list of activities and events
www.rushfordpetersonvalley.com



We proudly
support
Commonweal Theatre!

Whatever your print needs, we have you covered. Catalogs, booklets, brochures, flyers, business cards, signs, banners, wall & floor graphics, POP displays, trade show materials and much more. We offer layout, design, digital printing, variable data, offset printing with inline coating, UV coating, full service bindery and delivery. In addition to printing, we offer complete mailing services and fulfillment.

We are your full service printer!

1416 Valleyhigh Drive NW Rochester, MN 55901 • 507-288-7788 or 800-298-7780 • www.johnson-printing.com

DONORS — THE PEOPLE WHO MAKE THE COMMONWEAL DREAM A REALITY

Troy & Jenna Iverson
 Michele & Robert Jersak
 Buster & Annette Johnson
 Jerry & Patti Johnson
 Linda G. Johnson
 Tory & Julie Johnson
 Karst Brewing
 Mary and Ron Kaser
 Janelle Kelleher
 Norb & Nancy Kelly
 Ed & Ann Keuper
 Annette & Richard Kiehne
 Julie & Tim Kiehne
 Ross Kiehne
 Sharyn & Bill Kiehne
 Fred Kiel %
 Sacred Clay Inn
 Jay & Patricia Kim
 Karl & Patricia Knutson
 Robert & Sharon Knutson
 Marlene & Robert Kohnen
 Ron & Nancy Kreinbring
 Gordy & Marsha Kuehne
 Rachel Kuhnle &
 Josiah Laubenstein
 Susan & Ron Kurth
 Dick & Mary Ellen
 Landwehr
 Martha & John Langowski
 Carolyn Larson
 Reginald & Jerilyn Laursen
 Richard & Penny Leake
 Connie & Glenn Leckband
 Karen A. Lischer
 Marcia & Bob Love
 Ron & Shaune Luck
 Susan & Lyle Luzum
 John & Sandra MacLaughlin
 Kathy MacLaughlin &
 Mike Augustin
 David & Ruth Marshall
 Matt Marshall
 Ramon G. Martin
 Nancy Martinson &
 Jeff Kamm
 Wendy & Mark Mattison

Frank Mcanulty &
 Hertha Lange
 Roger & Lynn Meyer
 Gary & Sharon Miller
 Robert Milligan &
 Sharon Danes
 Wanda & Craig Mitchell
 Martin & Mary Lou Mohr
 Terry Morrison
 Greg Murphy &
 Jean Daywitt
 Kay Nelson & Jim Parker
 Elise Nelson
 Harland Nelson
 Linda Nelson &
 Mike Larsen
 Dick & Joan Niemiec
 Terry & Karen Neneman
 André & Madeline Novack
 Frieda & Ron Nowland
 Gary & LeAnn Olson
 Kenneth & Sharon Olson
 Jim & Ruth Ostrem
 Dennis & Joan Paulson
 David & Becky Pederson
 Drew & Cheryl Pellett
 Robert & Phyllis Penheiter
 Ann & Noel Peterson
 Sarah Peterson %
 Peterson Creative
 Photography & Design
 Jim & June Reineke
 David Reichert &
 Jeanne Thoreson
 Pat & Joe Reymann
 Jarrett & Linda Richardson
 Terry Rindfleisch &
 Linda Hirsh
 Renata Risløw
 Steven & Pam Ristau
 José Rivas
 Janis Rockabrand &
 Jim Wolfe
 Kristie & Paul Roeder
 David & Joy Roslien
 Craig Ross

Edward & Katie Ruen
 Dave & Nancy Runningen
 Jimmy Schwichtenberg %
 S & A Petroleum, Inc.
 Peter & Vicki Torkelson %
 Scandinavian Inn
 Mary Schaller
 Bruce & Kathy Schott
 Matt & Stacey Schultz
 Matthew & Lisa Schutte
 Jessica Schwiier
 Kay Shaw
 Tom & Marcy Sherwood
 Linda Sifford & Tom Sautter
 Marilyn Silver in memory of
 Howard Silver
 Brian & Betty Singer-Towns
 Kent Simmonds &
 Lynne Sootheran
 Kathleen & Delbert Smith
 Jeanette Sobania &
 Pam Nelms
 Eugene & Sandra Somdahl
 Jim Spencer &
 Michele Valletta
 Charlie & Ann Sparks
 Michele & Rick Speltz
 Byron Stadsfold
 Kim & Caren Stelson
 Rick & Cheryl Lamon %
 Stone Mill Hotel & Suites
 Jack & Kay Strobel
 Glenn & Pat Tabor
 Linda Tacke
 Edward Taylor
 Dave & Marti Gray %
 James A. Thompson
 House
 Cindy Beech &
 P. J. Thompson
 Diane & Bill Tisue
 Richard & Jeanne Toews
 Stephen & Julie Troutman
 Margaret Vagts
 Jeremy van Meter
 Rick Walters & Sanna Yoder

Joyce Walker
 Sandy Webb
 Bette & David Weinmann
 Jim & Mary Wilder
 Kay Wold
 Richard & Louise
 Wolfgang
 Tom Woxland &
 Carol Birkland
 David & Jeanne Wright
 Joel & Julie Young

\$150-\$250 per year
(Single MDC Level)

Karen Acker
 Constance Arneson
 Jim Boeding
 Terry & Renae Boydston
 Bertha Boyum
 Joanne Broady
 Ingrid Callaghan
 Naomi Craft
 Elizabeth Doty
 Elizabeth Dunn
 Jean Ellingson
 Claire Ennis
 Ruth Fjelstad
 Elizabeth & James Fritz
 Sherry Gribble
 Kathie & LeRoy Haynes
 Doris Heikes
 Jenine E. Jordahl
 James Kunz
 Philip Muehe
 Gary Olson
 Patty Peterson
 Marilyn Riederer
 Brandt Roberts
 Barbara Ruhter
 Bev Spande
 Stephen Strickler
 Brett Winter
 Jane Wolfram

COMMONWEAL BOARD OF DIRECTORS

Alan Bailey, David Boen, Dan Christiansen, Laura Gentry, Chris Hanson, Wendy Mattison, Ken Mogren, Sarah Peterson, José Rivas, Joan Ruen.

CURRENT INDIVIDUAL DONORS

MORE PEOPLE WHO MAKE THE COMMONWEAL DREAM A REALITY

Listed below are all the donors, who are not MDC members, who generously contributed to the Commonwealth in 2021. To make a donation please use the "Get Involved" page on our website, or send your check to **Commonweal Theatre, P.O. Box 15, Lanesboro, MN 55949**. Be sure to write "donation" on the memo line.

Aaron Preusse	Bob & Pat Fiedler	Darlene & Anya	Elizabeth Stewart &
Aaron Silver	Bob & Sheri Erickson	Dammermann	Paul Zellweger
Abbey Hellickson	Bob Anderson	Darlene Schober	Elizabeth Lopp
Adria Ramos	Bob Wittrock	Dave & Amanda Schutz	Elizabeth Meyer
Aimee Chastain	Bonnie Warrington	Dave & Nancy Harrison	Ellen Macdonald
Alessandra Chiarelli	Brandon Zembal &	Dave Johnston	Ellen Rasmussen
Alex Schlesinger	Tanea Mahanna	David & Helen Dechaine	Emily Spende
Alison & Brad Leathers	Brenda Petersen	David & Shirley Mahoney	Eric & Gayle Bunge
Allen Kaufmann	Brent Meyer	David Arneson	Eric & Lisa Farnberg
Allison Rupp	Brett Cook	David Bellows	Eric Burdt
Allyson Evans	Brian & Kristine Lee	David Gilmore	Erica Jensrud
Alyssa Mahaffay	Brian Baskett	David Pratzon	Eugene & Margaret
Amanda (Davis) Lenweaver	Briant & Betsy McMahon	David Rothstein &	Hokanson
Amanda Refuse	Brooke Smith	Sharon Akimoto	Evelyn Schlichting
Amy & Val Cordry	Bruce & Cynthia Wulfsberg	David Susag	Fae Wilson
Amy Kotsenas	Bruce & Jan Larson	Deb & Brian Benoy	Florence Sandok
Amy McKnight	Bruce Nelson & Barb Watts	Debbie & Brad Olson	Fran Sauer
Amy Rumschlag	Bryan & Kathy Kufus	Deborah Pitzzen	Fred & Ruth Kurtz
Andrea Miller	Bryan Roecker	Deborah Vosler	Fred Smith
Andy & Karen Heimdahl	Camille Burke	Debra & Douglas Dewanz	Gail Prete
Andy Stella	Candace & Gregory	Debra Holmgren	Gale Nelson
Anita Jean Hall	Carlstrom	Dee Kimmel &	Gary & Anita Wilson
Ann Brice & Bill Haviland	Carl Duyck	Jenny Kennedy	Gary & Joanne Gilbertson
Ann & Mark Thompson	Carl Lindberg	Denise, Theodore &	Gary & Nancy Hayden
Ann Baker	Carla Noack	Valerie Barthels	Gary & Sharon Johnson
Ann Ladd	Carlene & Cameron Roberts	Dennis & Carolyn Davidson	Gary & Susan Corbisier
Ann Siverling	Carol & Cliff Lucido	Dennis & Marilyn	Gary Danciu
Ann Yourell & Steve Sharp	Carol Dixon	Bettenhausen	Gavin Nachtigall
Anne & Greg Yakle	Carol Overland	Dennis Magnuson	Gayle & Richard Garrity
Anne Drecktrah	Carol Taylor	Diana Percy	Gayle Waldera &
Anne Marie & David Farning	Carolyn & Tom Smith	Diane & Bill Tisue	Wayne Ledebuhr
Anne Marie &	Carolyn Warner	Diane & Duane Lambrecht	Gene & Sandra Dankbar
Keith Kramlinger	Catherine Marks	Diane & Jon Closson	George & Virginia Severson
Annette Evenson	Cathy & Thomas Alpizar	Diane & Norbert Lovstuen	Geri & Russ Farnsworth
Annic Miller	Chad Steinfeldt	Diane Cariveau	Gerri Nielsen
Annie Cady	Charles & Donna Briscoe	Diane Puntenney	Glencie Rhodas
Anonymous Donor	Cheryl & Bob Roediger	Dianne & Fred Schjolberg	Glenn & Leana Dixon
Ardith Brown	Cheryl Dornink	Dick Buggs	Glenn Klapperich
Arllys & Lorado Adelmann	Cheryl Watson	Dillon Denisen & Becky Trom	Gloria Hennessey
Arlyn & Connie Picken	Chris & Anna Hanson	Don Hoehn	Gloria Schad
Art & Mary Ann Ekern	Chris & Diane Johnson	Don Quiram	Gloria Schoenkecht
Arvid & Gaylene Mortensen	Chris & Jeff White	Donald A. Nelson	Gregg & Kathy Carlsen
Avis Jensen	Chris & Kacie Mixon	Donald Stover	Gregory Dawson
Barb & Don DeCramer	Chris Suby	Donna Scheck	Harald & Ann Lohn
Barb Burchill	Christiana Lundholm	Doris McFarlane	Harlan & Sonja Satrom
Barb Piper	Christine Mattison	Dorothy & Jerry Denisen	Harlan Nelson
Barbara & Joel Mielke	Christopher & Suzanne Colby	Dorothy Coons	Harriet Lawston
Barbara & Paul Klaas	Christopher Brauckman	Dorothy Evenson	Heather Tesoriero
Barbara Beck	Christopher Gerson	Doug & Diana Lawrence	Heidi & Eric Becker
Barbara Beeman	Chuck & Mary Phillips	Doug Schommer	Heidi & Larry Chladek
Barbara Knutsen	Cindy & Gage Andretta	Douglas Croucher	Heidi Ricks
Barbara Mahr	Cindy Weber	Douglas Tice	Helen Larson
Barbara Wright-Quarton	Claire Knocke	Drue Fergisong &	Helene Zinberg
Barton & Pam Seebach	Claire Seitzinger	Ralph Zerbe	Houston Dental
Bebe & Pete Keith	Connie Edwards	Dustin & Dominique Luecke	Howie Tobak
Ben & Mary Byker	Connie Minnick	Earl Hammell &	Ilene Edwards
Ben Gorman	Cory & Rachel Poncelet	Kris Anderson	Irene & Fred Green
Benjamin O'Konski	Craig Johnson	Ed & Barb Armbruster	Isabel Kramlinger
Benjamin Vander Kooi, Jr.	Curt & Beverly Proud	Ed Pfannkoch	Jack Uldrich
Beth & Rue Riley	Cynthia Fahser	Edith & Larry Langsev	Jackie & Tedd Johnson
Beth Hahne	Cynthia Halleen	Edward & Karel Moersfelder	Jackie Remery-Pearson
Beth Richardson	Cynthia Huggenvik	Edward LeVieux	Jackie Wolter Luna
Bethany & Robin Krom	Dale & Sonya Nimrod	Eileen Kuhnle	Jaclyn Johnson &
Bethany Werner	Dan & Jayme Nelson	Elaine Allen &	Jonathan Levine
Betty & Gary Pedersen	Dan & Maureen Anderson	Bryan Kingsriter	Jacqueline Kartman
Betty Bergsgaard	Dan & Vicki Anderson	Elaine & Harold Welda	James & Alice Leidel
Bill Knott	Dana Huschle & Reva Parker	Elaine & Robert Kirk	James & Nancy Reynolds
Blake & Caleb	Daniel & Brenda Rooney	Elliott Rustad	Jan & Gerald Nelson
Lauritsen-Norby	Daniel Stock & Megan Pence	Elise Gregory	Jane & Clifton Grevstad
Bob & Marilyn Larson	Daniel LaRocque	Elizabeth & James Fritz	Jane & Dennis Timmerman

DONORS — MORE PEOPLE WHO MAKE THE COMMONWEAL DREAM A REALITY

Jane Nelson	Judy Nelson	Liane Henkell	Michael & Trudy Kamper
Jane Peck	Judy Trousdell	Lilly & Mark Jensen	Michael Austin
Janet & Bob Calander	Judy Wilder	Linda & Bradley Quaderer	Michael Bowler
Janet & John Johnson	Julee Caspers Agar	Linda & Dave Harvey	Michael Clemens
Janet & Tom Munger	Julie & David Aanes	Linda Curtis	Michael Hill
Janet Brauckman	Julie & Kevin Sutter	Linda Long	Michelle & Matthew
Janis & Rodney Tanner	Julie & Roger Deets	Linda Watson	Moersfelder
Jay Heiken	Julie Aldrich	Linnea & Tom Nicol	Michelle Barness
Jay Hesley	June Torrisson	Linnea Sodergren	Michelle Cochran
Jay Kobriger	Karen Buggs	Lisa & Bret Klaehn	Mike & Meg Hennessey
Jean Allen	Karen Greenslade	Lisa & John Conzemius	Mike Lynn
Jean Selle	Karen Heistand	Lisa Pearson	Mikey Cohen
Jeanne & David Cornish	Karen L. Allen	Liz Curran	Mollie & John Theel
Jeanne & Jon Logelin	Karen Olson	Lizzy Andretta	Mullen Dowdal
Jeff & Dawn Thompson	Kate Barr	Lois & Clarence Shub	Muriel & Jim Pemble
Jeff & Ollie Lepper	Kate Lamb	Lois Peterson	Nancy & Michael Stanek
Jeff Daood	Kate Martinson	Loren Baldus	Nancy Brubaker
Jeff Ruehle	Kathleen Abrahamson	Lori Sims	Nancy Movall
Jeffrey & Angela Raddatz	Kathleen Lindblad	Lorraine Borowski	Nancy O'Reilly
Jeffrey & Sara Staab	Kathleen Quinn	Louanne O'Brien	Nancy Toensing
Jeffrey Hatcher	Kathryn & Stephen Struck	LouAnne Stabb	Naomi Craft
Jeffrey Bernardy	Kathryn & Tom Ryders	Luann Wilcox	Nathan & Denise Davidson
Jenni Taggart	Kathy & Eric Thiss	Lynelle Osgood	Nathan Dungan &
Jennifer & Scott Wagner	Kathy & Gary Huschle	Lynn Krapf	Susan Hawks
Jennifer Paloma Rafferty	Kathy & Steve Delano	Lynn Lanners	Nathan Laubenstein &
Jennifer Ryg	Kathy & Tim Geisler	Lynne & Willard Jacobson	Heather Hanft
Jerald & Terry Lichte-Molnar	Kathy Schoonhoven	Lynne Kirklín	Nathan Semsch
Jeremy DeGier	Katie Stodd Knapp	M. Robert Ayerhart	Nathaniel Barmore
Jeremy Lane	Kay & George Spangler	Marcy & Tom Sherwood	Neal & Marie Buethe
Jeri Sebo	Kay Robinson	Maren Zincke	Nicole Pearson
Jerry & Su Ritter	Keith & Deborah House	Margaret Lambert	Nile & Kay Fellows
Jesse Labonne	Keith & Jo Anne Agrimson	Margaret Petersen	Norah Bringer
Jessica Michalski	Keith & Laney Lindor	Marianne & Harro Hohenner	Norma Budzinski
Jill Sicheneder	Keith & Natalie Johnson	Marilyn & Ron Reis	Owen Ziemer
Jillian Peltzman	Kelli Venzke	Marilyn Harstad	Pam Kopriwa-Barnes
Jim & Dee Buchholz	Ken & Gail Bittner	Marilyn Schwab	Pamela Flattum
Jim & Elaine McNeil	Ken & Karen Bittner	Mark Muggli &	Pat & Joan Quinn
Jim & Monique Howe	Ken Kidd	Carol Gilbertson	Pat & Mark Anderson
Jim & Sherry Oeltjenbruns	Ken Nichols & Sharon Wonsil	Mark & Claire Dunn	Pat Hinkle
Jo Marie Thompson &	Kendra Weber	Mark & Gay Herzberg	Pat Johnson
Robert Larson	Kent & Barbara Nelson	Mark & Ivy Pillers	Patricia & James McIntosh
Jo Seton & Brad Wronski	Kent & Cindy Hofer	Mark & Jeanne Olson	Patricia Carlberg
Joan Anderson	Kent & Janice Johnson	Mark & Kelly Baer	Patricia Sample
Joan Laubenstein	Kent & Karen Bonte	Mark Dannenberg	Patrick & Linda Smith
JoAnn & George Topness	Kent Swan	Mark Diez	Patti & Jerry Johnson
Joanne Broady	Kevin Brinkmann	Mark Hamann	Patty & Lu Paulson
Jody & Jay Myers	Kevin Drake	Mark Miedtke	Patty Connelly
Joe & Sheila Goetzke	Kevin O'Brien	Mark Nelson	Paul & Sue Anderson
Joel & Brooke Pfeiffer	Kim & Jean Pierre Menard	Mark Sampson	Paul Batalden
Joel & Kathryn Anderson	Kimberly Hoffmann	Mark Schreiter	Paul K. Schulte
John & Arlene Nelson	Kirby Bennett &	Mark Weiers	Paul Kiehne
John & Debbie Orenstein	Phil Losacker	Marlene Michel	Paul Laplante
John & Karen Kristoff	Kirsten Welge	Martha Baird	Paul Stevens
John & Kelly Vriezen	Krist Johnson	Marty Schuster	Paula Craig & John Lieske
John & Mary Wiater	Kristen Jacobs-Andresen	Marvin Grant &	Pauline Christensen
John & Rose Pederson	Kristin Musselman	Carolyn Hensrud	Peggy Hanson &
John & Susan Eddy	Kristine & Michael Larson	Mary Evans	Frank Wright
John Beatty	Kristine Claussen	Mary Finnerty	Peter & Lisa Bakken
John Bening	Kyle Swanson	Mary Frantz	Peter & Nancy Breyfogle
John Dunleavy	Larry Iverson	Mary Hoffman	Peter Borg
John Molseed	Laura & Duane Hookom	Mary Jo Ellingson	Peter Moore
Jolene Beddow	Laura & Kevin Horihan	Mary Lee Eischen &	Peter Seed
Jon Anderson	Laura Demuth	Bob Stuber	Phil & Pam Iasevoli
Jon Peterson	Laura Tills	Mary Lillestol	Phil Albu
Joseph & Joan Francois	Laurice Kneeskern	Mary Sack	Phil Strom
Joseph Gray	Laurie & Joel Kramer	Mary Waudby	Preston & Connie Hollister
Joseph Kalaidis	Laurie Bryant	Mary West	Rachel Tichy
Josiah Robinson	Laurie Everitt	Matthew & Karen Quanrud	Randy & Linda Prudoehl
Josie Papenfuss	Lawrence Kerzner	Maureen Johnson	Randy & Sheryl Chapman
Joyce & Dennis Beekman	LeAnn Bollum	Meellie Fish	Randy Schenkat
Joyce & Drew Meyer	Leanna Rubin	Megan Hanks	Raymond & Judy Auger
Joyce Duede	Lee Gundersheimer	Melina Cohen	Rebecca Benson
Joyce Pelnar	Leslie & Kevin Sand	Melanie Carstensen	Reggie Shones
Judith Bronson	Leslie Levine	Merritt Olsen	Rev. Betsy Dartt
Judy & David Jacobson	Lester & Dianne Dunn	Michael & Kim Farber	Rich Brunner
Judy & Dwight Boyum	Letitia & Glen Kopperud	Michael & Moira Majerle	Rich Kasacek

DONORS — MORE PEOPLE WHO MAKE THE COMMONWEAL DREAM A REALITY

Richard & Carol Eick
 Richard & Nancy Blum
 Richard Dietman
 Richard Gozia &
 Elizabeth Holloway
 Richard Kaiser
 Rita Haugh
 Robert & Bonnie Flom
 Robert & Linda Railey
 Robert & Lois Buntz
 Robert Angelici
 Robert Gaines
 Robert Gardner
 Robert Geraghty
 Robert Lawson
 Robert Todd
 Roberta & Marvin Bringe
 Roberta Peterson
 Roger & Carolyn Greenlaw
 Roger & Denise Ring
 Roger & Emily Smith
 Roger & Joyce Peckover
 Roger Hegland
 Romi & Mark Wilhelm
 Ron Clark
 Ronald & Kathy Jensen
 Rose Johnson
 Rose Olmsted
 Rosemary Broughton
 Rosie Thacher
 Ruth & Phil Abrahamson
 Ryan & Sara Kling-Punt
 Sally & Morgan Ming
 Sally Novak
 Sandi Serdahl

Sandy Kiel
 Sara & Stephen Galligan
 Sara Pecor
 Sara Templin
 Sara Xavier
 Sarah Crane
 Scott & Elyse Hawthorne
 Scott Roser &
 Lyubov Slashcheva
 Scott & Sarah Sailer
 Scott Holtz
 Scott Weber
 Sean McCauley
 Seth Jovaag
 Seth Kaltwasser
 Shannon Mastel
 Shari Chamberlain
 Sharon Price
 Sharry Hebert
 Sheila & Steve Arnold
 Shelly Billiet
 Sherry & Marc Nichols
 Shirley & Rod Miller
 Shreyasee Amin
 Sonja Cook
 Sonja Sola
 Stan Peal & Laura Depta
 Stan & Sharlene Milewsky
 Stan Stern
 Stef O'Keefe
 Stephen & Cindy
 Peterson-Wlonski
 Stephen Carmichael
 Stephen Houtz
 Steve & Marlene Maloney

Steve Stricker
 Steven & Jody Skolnick
 Steven & Mary Jo Tittl
 Steven & Nadeane Schossow
 Steven & Sandra Hunt
 Steven Brillhart
 Steven Weekley
 Stuart & Nikka Vrieze
 Sue & Joe Banken
 Sue & Tom Holst
 Sue Carlson
 Sue Stott
 Susan & Bill Kling
 Susan d'Autremont
 Susan Scharmer
 Suzan & Lee Gass
 Suzanne Toce
 Suzanne Young
 Swen Neufeldt
 Sydney Paredes
 Tabitha Esbrook
 Tamara Marks &
 Bryn Geerdes
 Tammy Moen
 Ted Henry
 Teresa Grossell
 Terrence Sweeney
 Terri Calvert
 Terrisa & Bob Fisher
 Therese Durkin
 Thomas & Arlene Theye
 Tim Lenartz
 Timothy Mackey
 Todd & Dianna Berry
 Tom & Adele Greenlee

Tom & Elizabeth Baum
 Tom & Joann Kujawa
 Tom & Joann Van Meter
 Tom & Julie Larson
 Tom & Karen Lucy
 Tom & Karen Vinson
 Tom & Peg Pursell
 Tom Cathcart & Karen Koch
 Tom Muschler
 Toni Carlstrom
 Tony & Patrice
 Vander Wielen
 Traci Ledford
 Tricia Baxter
 Troy & Deann Underwood
 Valerie Holcombe
 VaLois Wilbur
 Vangy & Carl Lundstrom
 Velma Brant
 Vern Riddle & Jennifer Wood
 Verna Peterson
 Vicki Donhowe
 Virginia Aug
 Walter & Susan Bradley
 Warren & Donna Schimunek
 Wayne & Joan Finnegan
 Wayne Rendahl
 Weldon Kuhn
 William & Juanita McGregor
 William & Judy Smithson
 William & Meg Moellering
 William Nelson

Peterson Creative

PHOTOGRAPHY & DESIGN

Beautiful
PORTRAIT ART FOR YOUR HOME.



SURROUND YOURSELF WITH THOSE YOU

Love.



CONTACT SARAH TODAY TO SCHEDULE YOUR SESSION.

Sarah Peterson, M. Photog., Certified Professional Photographer

WWW.PETERSONCREATIVEPHOTO.COM | 507.421.9906

 [petersoncreative](#)  [petersoncreative](#)  [petersoncreativ](#)

FAMILIES | SENIOR YEAR | REUNIONS | CHILDREN