

THE COMMONWEAL THEATRE COMPANY PRESENTS

WOMEN IN JEOPARDY!

BY WENDY MACLEOD



A FLIRTY COMIC CAPER

JUL 1—OCT 21

PROFESSIONAL LIVE THEATRE

LAND ACKNOWLEDGEMENT

We, at the **Commonweal Theatre**, acknowledge that we work and gather on the ancestral lands of the Dakota Nation and other Indigenous peoples. We recognize these Nations as the original caretakers of this land and acknowledge the injustices committed against them. We strive to promote healing and inclusion through storytelling, which is fundamental to our mission.

As artists in our community we have a responsibility to create a welcoming, inclusive, and nurturing environment where visitors and community members can gather and explore big ideas through live theatre. Fostering such an environment begins with education and reflection. Our Land Acknowledgement is just one way the Commonweal exercises our commitment to Equity, Diversity, and Inclusion.

Thank you to the Minnesota Historical Society, Lanesboro Historical Society, Prairie Island Indian Community, Mississippi Valley Archeology Center, and Mower County Historical Society for assisting in the research that led to the formation of our Land Acknowledgement.



FIRE MOUNTAIN FABRICS & SUPPLY

info@firemountainfabrics.com, 6264 Boone Ave N, Brooklyn Park, MN 55428

VICTORIA SCATTERGOOD • WWW.VSCATTERGOOD.COM

Metis artist Victoria Scattergood is inspired by historical ledger drawings which were popular across the northern and southern plains of Canada and the US. She puts a unique perspective on it, using actual historical ledger prints from the late 1800s with beautiful, hand drawn animals.

WELCOME TO OUR 35th SEASON!

Welcome to our 35th season! Whether you've been with us from the beginning, or this is your first time, we are thrilled you could join us as we celebrate over three decades of producing award-winning, professional, live theatre in Lanesboro. The journey we will take together this year is full of romance, mystery, laughs, and thrills.

Next up is *Women in Jeopardy!* Spend some time with a very close group of women, who are concerned for one in their midst: a divorcée trying to reclaim her life with a local dentist (whom her best friends fear is a serial killer). Throw in a feisty daughter, a hormonal snowboarder, and a quirky police detective and you have the makings of a riotous evening in the theatre!

Our third offering of the season is sure to tickle your funny bone.

Enjoy!



HAL CROPP

Producing Artistic Director

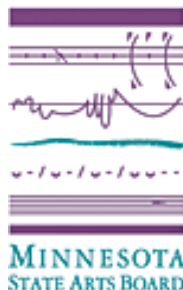


The Mystery of Edwin Drood 2022



The Commonwealth Theatre Company is a member of Minnesota Citizens for the Arts and a constituent member of Theatre Communications Group. This activity is made possible by the voters of Minnesota through a grant from the Minnesota State Arts Board, thanks to a legislative appropriation from the arts and cultural heritage fund.

208 Parkway Avenue N., P.O. Box 15
Lanesboro, Minnesota 55949
(800)657-7025 • (507)467-2525
Commonwealththeatre.org



THE COMPANY

THE ARTIST/ADMINISTRATOR

The Commonwealth Theatre operates under a unique model in which all resident company members have specific, non-artistic responsibilities in addition to their artistic projects. This innovative approach has a great many benefits, most recently illustrated by the fact that we were able to keep our team fully employed throughout the pandemic, allowing us to reopen our doors and once again bring you professional live theater at the earliest possible opportunity—one of the first theaters in the nation to do so.



LIZZY ANDRETTA (she/her) is in her seventh season at the Commonwealth, having first appeared in *The Elephant Man* (2017). Since then, she has appeared in *Dancing Lessons*, *Dracula: Prince of Blood*, *Boeing Boeing*, *The 25th Annual Putnam County Spelling Bee*, and last season's *Leading Ladies* and *The Mystery of Edwin Drood*. She also served as the choreographer for *Peter & the Starcatcher*, *Stones in His Pockets*, and *A Christmas Carol* (2021). Lizzy holds a B.S. in theatre from Skidmore College and an M.F.A. from the East 15 Acting School in London.



CODY BEYER (he/him) is starting his first full season with the Commonwealth after joining last summer. Last season, he co-designed props for *Good People* and appeared onstage in *Alice in Winter Wonderland*. Cody is an actor, designer, and builder who worked in Chicago for 7 years before joining this community with his partner and fellow company member, Laurie Roberts. In Chicago, he worked mostly with Theatre-Y and Hell in a Handbag Productions. Favorite credits include *Macbeth* and *Stories of the Body*. He received his B.A. in Theatre Honors from the University of Tennessee.



STELA BURDT (she/her) is grateful to celebrate her 24th season with our Commonwealth family. Past onstage work includes roles in *Good People*, *Souvenir*, *Woody Guthrie's American Song*, *Crimes of the Heart*, *Zombies from the Beyond*, *A Midnight Dreary*, *Harvey*, and *Man of La Mancha*. In addition to performing, Stela is a music director, sound designer, and freelance vocalist. Currently, Stela is in the role of a lifetime as mom to Kieran. Love and Light, #TeamScottyForever.



HAL CROPP (he/him) is in his 32nd season where favorite roles have been in *The Mystery of Edwin Drood*, *Come Back*, *Ghostwriter*, *Dracula*, *Outside Mullingar*, *Sherlock Holmes*, *The Drawer Boy*, *To Kill A Mockingbird*, *Picasso at the Lapin Agile*, *Christmas Carol*, *Groucho*, and *Talley's Folly*. Selected directing credits: *I Love to Eat*, *Headspace Theatre*, *Peter and the Starcatcher*, *Brand*, *Heartland Portrait*, *Wild Duck*, *Measure for Measure*, *Peer Gynt*, *A Midnight Dreary*, *Enchanted April*, *Ghosts*, and *Little Shop of Horrors*. Hal holds a B.A. (Brown University), an M.B.A. (Santa Clara University), and an M.F.A. (the National Theater Conservatory). He was the Sally Irvine Award winner for Initiative (2006).



ASK AT THE BOX OFFICE ABOUT OUR ASSISTED-LISTENING DEVICES, SPECIAL SEATING FOR THOSE WITH MOBILITY IMPAIRMENTS, ASL-INTERPRETED PERFORMANCES AND VISUAL DESCRIPTION FOR THE SIGHT-IMPAIRED.

THE COMPANY



DAVID HENNESSEY (he/him) serves on the Commonweal development team and has appeared in more than 60 shows over 25 years, including Doc in *Leading Ladies*. Other favorites: *Headspace Theatre*, *Holmes and Watson*, *The Drawer Boy*, and *The Rainmaker*. He designed costumes for *Ice Maidens* and *A Streetcar Named Desire*, oversees audio descriptions for the visually impaired, and leads COVID mitigation protocols. Other acting credits include In Heart Theatre, Park Square Theatre, Jungle Theatre, and American Players Theatre. He lives in Preston with Linda, his favorite scene partner for 50 years.



SARA HUESER (she/her) started as an apprentice at the Commonweal in 2022 and is joining the Resident Company. Favorite Commonweal credits: *Leading Ladies*, *The Mystery of Edwin Droid*, *Good People*, and *Alice in Winter Wonderland*. Before Lanesboro, she worked for Centre Stage South Carolina. Originally from Newberrytown, PA, Sara holds a bachelor's in Computer Engineering and a B.F.A from Savannah College of Art and Design. Sara is grateful for the Commonweal and her parents for the outpouring of support.



JACLYN JUNE JOHNSON (she/they) joined the Commonweal in 2020. An arts administrator, actor, director, playwright, costume designer, and teaching artist, Jaclyn has credits across the country. Companies include St. Croix Festival Theatre, Children's Theatre Madison, Creede Repertory, Riverside Shakespeare Festival, Riverside Theatre, Chicago's UTG Improv Theatre. Jaclyn has a B.A. from Cornell College. She wishes to thank: her family, friends, spouse and their pets for their encouragement and love; and you for your support of the arts and the uniquely healing community of theatre.



JOSIAH LAUBENSTEIN (he/him) is in his fifth season at the Commonweal, serving as Literary Manager and Videographer. Commonweal credits include: *Leading Ladies*, *Dancing Lessons*, and *Boeing Boeing*. At Festival Theatre in St. Croix Falls, WI, he served as the Marketing Director and acted in nine productions over two years. Josiah earned his M.F.A. from the University of South Carolina. Josiah is a proud member of Glassbox Theatre Group and a co-founder of Highway Walkers Media Company. He is happily married to Rachel and besotted with their first child, Franny.



ISABELLA ANASTASIA LEIGH (she/her) is elated to be joining Commonweal for her first season. Isa is a director, stage manager, and wardrobe artist from Madison, Wisconsin, most recently residing in Austin, Texas. Previously, she has worked with Austin Shakespeare, Broom Street Theater, Children's Theatre of Madison, Forward Theater, Jarrott Productions, Music Theatre of Madison, ScriptWorks, and StageQ, among others. Isa received her BA in Gender & Women's Studies from the University of Wisconsin - Madison. Much love to her kitties, Rosalind and Beatrice.



JOHN B. NICOL (he/him) is excited to be returning to the Commonweal as a resident ensemble member! Born and raised in community theatres around Northeastern Iowa, he went on to receive his B.S. in Theatre Arts from Minnesota State University, Mankato. There, he played Matt Friedman in *Talley's Folly* and Smee in *Peter and the Starcatcher*. Other regional credits: Willard Hewitt in *Footloose* at the Paul Bunyan Playhouse and Demetrius in *A Midsummer Night's Dream* with Free to the People Theatre.



THANK YOU FOR SILENCING YOUR
PHONES AND REFRAINING FROM TEXTING
DURING THE PERFORMANCE.

THE COMPANY



LAURIE ROBERTS (she/her) recently appeared in *Alice in Winter Wonderland* and choreographed *The Mystery of Edwin Drood*. Chicago credits include A Red Orchid Theatre, Hell in a Handbag, Facility Theatre, Theatre Y, and Red Tape Theatre. She also performed in Cincinnati at Know Theater and Cincinnati Playhouse in the Park. Some of her favorite work has been devised and performed in Pontlevoy, France, and at the Edinburgh Festival Fringe. Laurie has also worked as an acting teacher, movement director, and choreographer. She earned her M.F.A. in Acting at the U. of South Carolina. Love to Duke Orsino, Merry, and her wonderful partner, Cody.



JODIT. RUSHING (they/them) is in their fifth season at the Commonweal. Their favorite credits include *An Iliad* (Wealthouse), *On The Verge*, *I Love to Eat*, *Leading Ladies*, and *Good People*. Before their tech apprenticeship with the Commonweal in 2019, they stage managed for Doniphan Dance Project in Tupelo, MS. Jodi holds a B.A. in Theatre and Film from the University of Mississippi.



TIM SAILER (he/him) is in his sixth season at the company, serving as an actor and the Assistant Director of Marketing. Recent Commonweal credits include *Leading Ladies*, *The Mystery of Edwin Drood*, and *A Christmas Carol*. Other regional work includes appearances at American Shakespeare Center, Utah Shakespeare Festival, Texas Shakespeare Festival, Park Square Theatre, and Theatre L'Homme Dieu. Tim holds an M.F.A. from the University of Houston. He lives in Lanesboro with his scruffy puppy Rufus.

PROUDLY
INSURING

LIFE & HEALTH
HOME
AUTO
BUSINESS
FARM

SINCE 1911



F&M INSURANCE
SERVICES

Service *You* Can Count On

100 Saint Anthony St. N. • 507.765.3387

RRIns@FMcommunity.com

Auto-Owners
INSURANCE
LIFE • HOME • CAR • BUSINESS

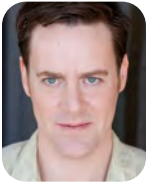
THE COMPANY



ALEX SCHLESINGER (they/them) is excited to join the Resident Ensemble after their apprenticeship in 2022. Alex graduated from Luther College in 2021 with a B.A. in Theatre. You may have seen them last year as Durdles in *The Mystery of Edwin Drood*, Stevie in *Good People*, and the Mad Hatter in *Alice in Winter Wonderland*. Their favorite role outside of the Commonweal was Riff Raff in the *Rocky Horror Show*. Alex thanks their mentor, professor, and good friend Jeff Dintaman for his years of support and sharing of knowledge that got Alex to where they are today.



ADRIENNE SWEENEY (she/her) is grateful to be in her 23rd season, serving as Assoc. Artistic Dir. and Dir. of External Relations in addition to artistic roles. From Philadelphia, she holds an M.F.A. in Acting from the U/AZ. A commercial voice talent, she can be heard regionally on radio and TV. Commonweal favorites include Scrooge in *A Christmas Carol* ('21), *Silent Sky* (director), *Boeing Boeing*, *Steel Magnolias*, *Outside Mullingar*, and *Sylvia*. Adrienne believes that the act of sitting together in the dark, sharing stories, can help bring light to the world, something we all crave now more than ever. She looks forward to sharing time and space with you.



JEREMY VAN METER (he/him) is enjoying his 12th season at the Commonweal. Favorite credits: Herb Tucker in *I Ought to Be in Pictures*, C.K. Dexter Haven in *The Philadelphia Story*, Anthony Reilly in *Outside Mullingar*, and the title role in *Dracula: Prince of Blood* by Scott Dixon. His career began at The Barter Theatre (VA), and he has appeared regionally at Riverside Theatre, Lexington Children's Theatre, Illinois Shakespeare Festival, and Great River Shakespeare Festival. Jeremy holds an M.F.A. in Acting from the U. of Iowa and makes his home in Lanesboro with his lovely and extremely talented wife, Catherine Glynn.



Working to better our communities every day.

Creating thriving communities starts by helping you work toward your hopes and dreams. **Let's talk.**

(507) 467-2145 | merchantsbank.com
118 Parkway Avenue N, Lanesboro

Member FDIC



We're proud to support
the Commonwealth Theatre.

AMISH EXPERIENCE



Gift Shop featuring locally handcrafted Amish Quilts, Baskets & Furniture; Collectibles; Home Decor; Garden Accents; & Specialty Foods

visit our Online Store
www.village-depot.com

105 Parkway Ave. N. • Lanesboro, MN 55949 • 507-467-2992



117 Parkway Ave. N.
 Lanesboro, MN 55949
 (507) 467-2994

e2boutiquemn@gmail.com



Oakley & Lori

GRANNY'S



LIQUOR

COME IN AND LET *Oakley*
 HELP YOU SELECT A TASTY CHOICE!

Open 7 Days a Week!

(507) 467-2700 • 113 Parkway Ave, Lanesboro

www.grannysliquor.com

PIZZA SANDWICHES

PANINIS ICE CREAM

Located in beautiful,
 downtown Lanesboro!



Order Online

www.claraseatery.com

111 Parkway Ave N
 Lanesboro, MN



LOCAL FOOD • DOWNTOWN LANESBORO



pedal
 pushers



LOVE
 YOUR
 FOOD!

www.pedalpusherscafe.com | 507-467-1050

507-467-8663
STONE MILL
HOTEL & SUITES

Historic Lanesboro, Minnesota



WWW.STONEMILLSUITES.COM

1/2 block from the theatre.

Scandinavian Inn



A Bed & Breakfast in Lanesboro

Like theater? You'll love our
 Mystery Nights! • 507-467-4500

www.scandinavianinn.com

GREEN GABLES INN

15 Modern Rooms

- Bridal Suite
- Fireplace & Whirlpool
- Smoke-free
- Open All Year

Hwy 16 West, Lanesboro, MN

Modern Convenience in a Quaint Country Setting

800-818-GABLES (4225) 507-467-2936

green@acegroup.cc

www.lanesboroweb.com/greengables

Health Through Chiropractic

**OFFICE
 HOURS**

M, T, W, F:
 9AM - 6PM

Thursday:
 Closed



102 W. Sheridan St.
 Lanesboro, MN 55949

507-467-2629 (24-hr. call 507-450-2466)

O'Leary's Bed & Breakfast

Charmingly restored
 1910 Victorian

Private baths | AC | Breakfast

707 Parkway Ave S
 Lanesboro

www.olearysbandb.com

(507) 467-3737



Selling Fat Cattle

Market Cows & Bulls

Wednesday Auctions at 8:30 AM

Selling all classes Livestock

Friday Auctions at 10:30 AM

Special Feeder Cattle & Brod Cow Auctions

Scheduled thru the Fall & Winter

Joe Nelson, Owner Cell: 507-450-6763 Barn: 507-467-2192

402 Coffee St E, Lanesboro, MN 55949 • LanesboroSalesCommission.com



**Stop in for breakfast or lunch at the
 Stockyard Cafe! Open on sale days.**



**THIS ACTIVITY IS MADE POSSIBLE BY THE
 VOTERS OF MINNESOTA THROUGH A MIN-
 NESOTA STATE ARTS BOARD OPERATING
 SUPPORT GRANT, THANKS TO A LEGIS-
 LATIVE APPROPRIATION FROM THE ARTS
 AND CULTURAL HERITAGE FUND.**

Oakenwald Terrace

**SOUTHERN MINNESOTA'S
 PREMIER BED &
 BREAKFAST**

218 Winona St.
 Chatfield, MN
 (507) 867-3806

www.OakenwaldTerrace.com



Bluff View Guest House • Whalan, MN • 507-459-3314

Whole House Rental

bluffview@acegroup.cc



Visit the VALLEY

Rushford Peterson Valley, a hidden gem in scenic bluff country with space to breathe and explore! Located 14 miles east of Lanesboro on scenic Highway 16.

THINGS TO DO

Experience bluff country by trail or water!

- Root River Bike Trail: 60 miles of paved trail
- Bluff Country Scenic Byway
- Root River fishing, tubing, canoeing

PLACES TO STAY

- Inns, campgrounds, vacation rentals

PLACES TO EAT

- Many local favorites

PLACES TO SHOP

- Basic necessities or items unique to the Valley



take root

Rushford Peterson Valley

MINNESOTA

Find us online for a full list of activities and events
www.rushfordpetersonvalley.com

F&M
Community
BANK

WE MAKE
BANKING
EASY!

Personal Banking
Business Banking
Mortgage Lending
Certificates of Deposit
Online Bill Pay
Remote Deposit Capture

FMCOMMUNITY.com



PROUDLY
SERVING

PRESTON

CHATFIELD

ROCHESTER

SINCE 1911

Member
FDIC





John Nelson *Client Focused.*



Results Driven.



507-216-1140

YOUR *local* REAL ESTATE CONNECTION!

SELLERS | BUYERS | FARMLAND | COMMERCIAL | www.johnnelsonrealty.com

A lovely drive just minutes
from Lanesboro on the
National Scenic Byway
Route 16 & located beside the

Root River 
State Bike Trail

**LOKEN'S
RUSHFORD INN**

rushfordinn.com **507-864-2222**

 **JOHNSON
PRINTING**

**We proudly
support
Commonweal Theatre!**

Whatever your print needs, we have you covered. Catalogs, booklets, brochures, flyers, business cards, signs, banners, wall & floor graphics, POP displays, trade show materials and much more. We offer layout, design, digital printing, variable data, offset printing with inline coating, UV coating, full service bindery and delivery. In addition to printing, we offer complete mailing services and fulfillment.

We are your full service printer!

1416 Valleyhigh Drive NW Rochester, MN 55901 • 507-288-7788 or 800-298-7780 • www.johnson-printing.com



**Looking Forward
to a Great
2023 Season**

**Local Design Talent
Proudly Supporting
Local Professional
Theatre**



211 11th avenue nw, rochester, mn 55901

507.206.6201

2023/2024 SEASON

Each concert features an exciting new guest conductor

Season opens October

ROCHESTERSYMPHONY.ORG



ROCHESTER
SYMPHONY

We bring great music to life.

101.1 THE RIVER

WINONA'S GREATEST HITS

LISTEN ONLINE AT WINONARADIO.COM
OR ON OUR NEW MOBILE APP



Download on the
App Store



GET IT ON
Google Play

Come enrich your world with song!

*Now Planning our 2023 - 2024 Season. More
info at www.ChoralArtsEnsemble.org*



LA CROSSE
community
THEATRE

LCT

2022-2023

Spring & Summer Season



www.lacrossetheatre.org | (608) 784-9292

NOTES FROM THE DIRECTOR



I Love Lucy; Laverne & Shirley; Sex and the City; Murder, She Wrote; The Golden Girls...

If you've ever curled up on the sofa and settled in to enjoy one of these shows, to laugh at an absurd predicament, smile at human folly, or become engrossed in a carefully crafted—but slightly far-fetched—tale, then, trust me, you're going to love *Women in Jeopardy!*

Just like Lucy and Ethel embarking on a harebrained scheme, or Dorothy, Rose, and Blanche gathered around the kitchen table, the central characters of Wendy MacLeod's delightful comedy (Jo, Liz, and Mary) are close female friends, standing together steadfastly—except when they're calling out one another for their ridiculousness and blind spots. And what I like about this play are the things I love about those old TV shows: the warmth and strength of the relationships and the shared sense of adventure as they encounter the world.

But hiding underneath these familiar tropes and sitcom archetypes are some thoughtful questions. What is the role of women in our society when they reach a certain age? How do you shape your life after a divorce and deal with an empty nest? How can a romantic life, your sexuality, be rekindled in your fifties? What are the values that friendships play in your life, and how do you maintain these connections?

On the other hand, you can just sit back, laugh, and enjoy another Chardonnay Tuesday with the gals!

—Craig Johnson

ABOUT THE PLAYWRIGHT

WENDY MACLEOD'S play *The House of Yes* became an award-winning Miramax film starring Parker Posey, and was produced by many theaters in the U.S. and abroad. Her other works for the stage include *Sin* and *Schoolgirl Figure*, both of which premiered at The Goodman, *Juvenilia* and *The Water Children*, both of which premiered at Playwrights Horizons, and *Things Being What They Are*, which premiered at Seattle Repertory Theatre and had an extended run at Steppenwolf in Chicago. She was the first writer selected for The Writer's Room residency at the Arden Theater in Philadelphia, where she wrote *Women in Jeopardy!* which was selected for The Kilroys' List and premiered at GEVA.

Her prose has appeared in *The New York Times*, *McSweeney's*, *Salon*, *POETRY magazine*, and on NPR's *All Things Considered*. A graduate of the Yale School of Drama, she is the James E. Michael Playwright-in-Residence at Kenyon College.



COMMONWEAL BOARD OF DIRECTORS

Alan Bailey, David Boen, Dan Christianson, Laura Gentry, Chris Hanson, Wendy Mattison, Ken Mogren, André Novack, Sarah Peterson, Jose Rivas, Joan Ruen

2023–2024 APPRENTICE CLASS

THE APPRENTICE PROGRAM

The Commonwealth Theatre Company offers exciting 11-month apprenticeships intended to help young theatre artists transition into the professional world. Apprentices serve on either a performance or technical track. Administratively, they work alongside company members on the Marketing, Development, and Production teams. Because of this rare organizational model, Commonwealth apprentices experience the full scope of running a nonprofit theatre company. It culminates in a final capstone production which is chosen, designed, and performed by the apprentice company.



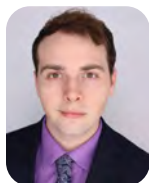
SYNTHIA GONZALEZ (they/them) is a recent graduate from Augustana College with a B.A. in Theatre History and Theatre Tech & Design. Their favorite stage management credits include *Faustus*, *Lightning Thief*, *The Mountaintop*, *Ride The Cyclone*, and *Cabaret*. Other credits include 2021–22 Augustana Dance Co. recitals (lighting design), *The Threepenny Opera* (assistant dir.), *The God of Vengeance* (director and set design). They are so excited to be involved at the Commonwealth, and hope you enjoy the show!



HANNAH HEIL (she/her) is overjoyed to be joining the Commonwealth family as an acting apprentice! Hannah grew up in the Colorado mountains and graduated from NYU Steinhardt with a Bachelor of Music in Vocal Performance: Music Theatre. Recent NYC credits include *The Wild Party*, *Assassins*, and *Damnation! The Musical!*, which Hannah co-created at NYU. Favorite regional credits include *A Chorus Line*, *Les Miserables*, and *EDGES: A Song Cycle*. Endless thanks to her mentor Alex, her besties Sonali and Ellie, and her loving, supportive family.



JOSIE RAMLER (they/she) is so excited to be working with the Commonwealth this season as an acting apprentice! Josie is from Chanhassen, MN and just graduated with a B.A. in Theatre from Luther College. Some of their favorite credits include playing Macbeth in *Macbeth*, Somebody in *Everybody* by Branden Jacobs-Jenkins, and assistant directing *Machinal* by Sophie Treadwell. They are so eager to be a part of the acting apprenticeship this year and to learn and grow with the Commonwealth!



JOSEPH SHERIDAN (he/him) is thrilled to be joining the Commonwealth as an apprentice! From Columbus, OH, Joseph has just graduated with a B.A. in Theatre and Arts Management from Miami University. Trading the small town of Oxford, OH for the even smaller town of Lanesboro, he's fulfilling no small dream: acting for the first time on the professional stage. Favorite credits include the original musical *The Butterflies' Promise* (writer and director), *Head Over Heels* (Dametas), and leading the student-run New Wave Theatre Company.



THOMAS TEETER (he/him) is overjoyed to be joining the Commonwealth apprentice program. Hailing from Topeka, KS, Tom has been a performer his entire life. A proud graduate of Carleton College and the National Theater Institute, his favorite projects include Louis XVI in *Marie Antoinette* at the Emerging Professionals Ensemble; *If I Should Die*, a play he wrote and starred in; and *That Wilderness of Glass*, a devised performance. While here, he hopes to make an impact on the Commonwealth.

Connect with the Commonwealth



ALSO FEATURING



BETTI BATTOCLETTI (Jo, she/her) recently performed at the Commonweal in *I Ought to Be in Pictures* and *The Mystery of Edwin Drood*. She appeared in *Sanders Family Christmas*, *On the Verge*, *The Clean House*, *The 25th Annual Putnam County Spelling Bee*, and *Steel Magnolias*. Other favorite credits include *Always...Patsy Cline* (at Lyric Arts), and *The World Goes Round*, *Urinetown* (The Jungle Theater), as well as *42nd Street*, *Prisoner of Second Avenue*, *Cassie in A Chorus Line* (Artistry), and Georgie Bukatinsky in *The Full Monty* (Theater Latte Da). She is a lyricist, playwright, choreographer and owns Bodiology Pilates in Minnetonka, MN.



ANNIE CADY (costume design, she/her) is happy to be back at the Commonweal this season. Favorite past Commonweal costume designs include *Steel Magnolias*, *Peter and the Starcatcher*, *The Three Musketeers*, *The 39 Steps*, and *Arcadia*. Annie has designed costumes for several theatre and dance companies including Ananya Dance Theatre, Artistry, The Children's Theatre Company, Threads Dance Project, Park Square, and Wonderlust. She is a faculty member and costume designer at Normandale Community College.



LYNDA J. DAHL (Liz understudy, she/her) is thrilled to play a part on the Commonweal stage. As a Twin Cities theatre actress, she's enjoyed roles in Theatre Pro Rata's *By the Bog of Cats* and *Convent of Pleasure*; *True West* and *Death of a Salesman* with St. Croix Festival; *Trust* at The Lab Theater; *Groupthink* and *The Wanderers* with Six Points; and *When We Were Young* and *Unafraid* with Persistent Theatre Productions. Film credits include features *Faerie* and *Twin Cities*. Lynda would like to thank Scott, the love of her life for his constant love and support.



PAUL EPTON (lighting design, he/him) is back to design for three productions this season. Past favorites include *Come Back*, *Sanders Family Christmas*, and *Silent Sky*. He started designing lights at Carleton College, spent 11 years in Detroit, and returned to MN in '92, where he has designed for Off-Leash Area, Six Points Theater, Mixed Blood Theatre, and others. A year-round bicyclist, one of his early designs was for *Spokesong*. Awards: Lighting Designer, Ivey Award Honoree for *Ruined*; Lighting Designer, Ivey Award Honoree for *Psst!*; Detroit Free Press Theatre Excellence Award (Design); and Detroit News Drama Critics Award (Theatre Craft).



CRAIG JOHNSON (director, he/him) is delighted to be back at Commonweal Theatre Company, having directed numerous productions over the past twenty years including last season's *The Mystery of Edwin Drood*, *Christmas Carol*, *Boeing Boeing*, *Dracula: Prince of Blood*, *When We Dead Awaken*, *Blithe Spirit*, and others. Craig is a Minneapolis director and actor, and has worked at many Twin Cities theaters. Closer to Lanesboro, he has directed productions at Rochester Civic Theatre and Cedar Summerstock Theater in Osage, Iowa.



ADAM LENEHAN (Jackson/Kirk, he/him) is grateful to be back at the Commonweal for his sophomore season. You may remember him as Bazzard in last year's *The Mystery of Edwin Drood*. Other favorite credits elsewhere include *Afterlife: A Ghost Story*, *The Rocky Horror Show*, *The Crucible*, and *Angels in America*. Adam has a B.A. in Theatre from Barat College and a MSHE. He presently works at Luther College. Residing in Spillville, he would like to thank the people (and fur family) in his life for lifting him up, encouraging him to be his authentic self, and pursuing what nourishes his spirit.



DAVID MARKSON (scenic design, he/him) is happy to return as scenic designer for the Commonweal. His first was *Bernhardt/Hamlet* earlier this season. He also helped with construction and painting for *Boeing Boeing*. Other scenic work includes River Falls Community Theatre (a founding member in '94), River Falls High School, and Festival Theatre in St. Croix Falls. Originally from Minneapolis, he has lived in River Falls, WI for the past 45 years, where he is recently "retired" as a sign painter. He continues to be a muralist, musician, artist, and arts advocate.

WOMEN IN JEOPARDY!

BY WENDY MACLEOD

DESIGNERS & SPECIALISTS

Director	Craig Johnson
Scenic Design	David Markson
Costume Design	Annie Cady
Lighting Design	Paul Epton
Sound Design	Sara Hueser
Props Design	Lizzy Andretta, John B. Nicol
Production Manager and Intimacy	Jaclyn June Johnson
Performance Stage Manager	Sara Hueser
Rehearsal Stage Manager	Jodi T. Rushing
Assistant Stage Managers	Synthia Gonzalez, Josie Ramler

CAST

Mary	Adrienne Sweeney
Jo	Betti Battocletti
Liz	Stela Burdt
Amanda	Hannah Heil
Trenner	Thomas Teeter
Jackson/Kirk	Adam Lenehan
Understudies	Lynda J. Dahl, Josie Ramler, Laurie Roberts, Tim Sailer, Joseph Sheridan

SETTING

Salt Lake City and Carmel Canyon, Utah; 2008

*There will be one 15-minute intermission,
Please see the front of house staff for the precise run time of each act.*

Originally produced by Geva Theatre Center, Rochester, New York
(Mark Cuddy, Artistic Director; Tom Parrish, Executive Director).
The play was originally developed by the Arden Theatre Company.

Women in Jeopardy! is presented by special arrangement with Broadway Licensing, LLC,
servicing the Dramatists Play Service collection. (www.dramatists.com)

MEDIA PARTNER

women
rochester

The Commonwealth is also grateful for a generous anonymous donation in sponsorship of the 2023 season. This activity is made possible by the voters of Minnesota through a Minnesota State Arts Board Operating Support grant, thanks to a legislative appropriation from the arts and cultural heritage fund.

HERE'S TO FRIENDSHIP

The following is a program notes excerpt from
a 2022 production of the play at Arizona Theatre Company.

MacLeod's play has been compared to *Sex and the City*, or *Thelma and Louise*, or even *The First Wives Club* (all of the women are single), and previous incarnations of the play suggest that it thrives on door slamming, mistaken identity, and wacky hijinks, with a bit of chardonnay thrown in for good measure.

However, one might argue that there is a bit more social commentary than initially meets the eye. Women make up 50.52% of the population in the United States, 57.4% of the workforce is female, and 23% of women ages 30-49 are single (that number rises to 28% for ages 50-64). What happens to a mid-life, mid-career woman when she is single? She turns to her girlfriends.

The friendship among the women in *Women in Jeopardy!* is what compels Mary and Jo to go to truly insane efforts to try and figure out if Jackson is not just a creeper murderer but, more importantly, if he is worthy of Liz. They want to protect her. While they are working out whether or not their BFF is dating a man who would kill a hygienist, they are actually playing out the thing that women the world over have done since the beginning of time: building a community of trust, acceptance, and love.

Liz, Mary, and Jo remind us that men may come and go—as do jobs and heartbreaks—but a good group of girlfriends is all that one needs for a happy life. Here's to friendship.

No Radio? No Problem!

Get the WPR app for your phone or tablet



WISCONSIN
PUBLIC RADIO

npr



GET IT ON
Google Play



Download on the
App Store

NIAGARA CAVE

Nationally recognized among best U.S. caves
One of "Ten Most Incredible Natural Wonders in MN"

Harmony, MN

- underground waterfall
- stalactites & stalagmites
- 1-hour guided tour
- ancient fossils
- gemstone mining
- 18-hole mini golf

Voted BEST Family Destination 2009-2015

Niagara Cave

2 miles

(507) 886-6606 or (800) 837-6606
www.niagaracave.com

Admission: \$5 Adults, \$4 Children & Seniors

Rent the *Jem* for your next party or event!

Visit the Jem

Harmony, MN

Visit the Jem

JEMMOVIES.COM - Bring your own bucket
Like us on Facebook for a discount on Popcorn!

Amish Tours of Harmony

In the Sugar Plum House on the Village Green & 45 Main Ave. N., Harmony, MN

Experience a Lifestyle...

- where horse & buggy still provide the transportation
- the home is lighted by kerosene lamps
- water is heated on a woodburning stove

Enjoy an exciting tour with one of our knowledgeable guides

- Mini Bus Tours
- Car Tours
- Group Bus Tours
- Spring through Fall
- No Sunday Tours

For Advance Tickets & Information
(507) 886-2303
www.amish-tours.com

Sylvan Brewing

Laurensburg, Michigan

Comfy, Crafty, & a little bit Crazy...

We've got beer for all tastes!

Open Year-round

100 Beacon St W
Lanesboro
507-467-HOPS (4677)
www.sylvanbeer.com

ROCKFILTER DISTILLERY

507-498-ROCK (7625)
113 Maple Drive - Spring Grove, MN

PLANTED TENDED MILLED & DISTILLED

A STONE'S THROW
from SPRING GROVE
MINNESOTA

www.rockfilterdistillery.com

SUGAR CREEK VINEYARD AND MEADERY, LLC

Locally owned by
Kevin & Bryan Logue

23661 County Rd 8, Fountain, MN

Phone: (612) 986-9177
sugarcreekvineyard@gmail.com
sugarcreekvineyard.com

WE CAN'T DO THIS WITHOUT YOU!

For 35 seasons the Commonwealth has been inspiring hearts, minds, and souls. It would be easy to believe that these marvelous stories have come about because of the hundreds of talented artists who have called the Commonwealth home.

Easy, but far from the truth. The real heroes who make up this company are you, our audience and loyal supporters.

But your tickets only cover half of what it costs to create live, professional theater. For us to continue bringing theater magic to you and future generations, please consider a gift in support of our mission "to enrich the common good."



HERE'S HOW YOU CAN HELP

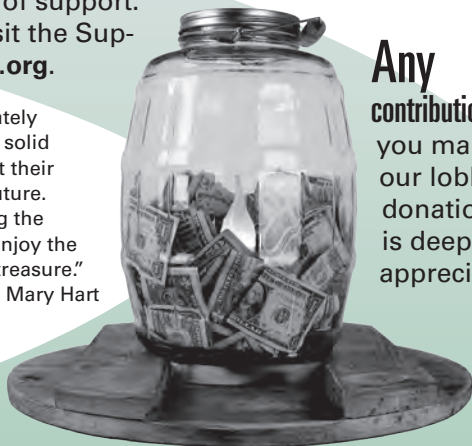
Join the MDC

The lifeblood of the Commonwealth is the MDC, which consists of individuals and households who make a non-binding, 10-year commitment of support. For membership details, please visit the Support page at **CommonwealthTheatre.org**.

"When the MDC was initiated, we immediately joined. This level of giving helps ensure a solid financial base for the organization to meet their annual expenses while planning for the future. We encourage you to join us in supporting the Commonwealth, so we all can continue to enjoy the wonderful productions we have come to treasure."

—Jon & Mary Hart

Any
contribution
you make to
our lobby
donation jar
is deeply
appreciated!



Planned Giving



"By including Commonwealth in our estate plan, we feel good knowing that we'll be helping to ensure that this gem will be here for future generations."

—Ken & Sally Mogren,
Winona, MN

Leave a legacy by adding us to your estate planning. More information can be found on the Support page of our website or by calling 507-467-2905 ext. 211.

Sponsorships & Underwriting

You can play a starring role without ever stepping on the stage by financially supporting a single production or an entire season. Contact Jeremy van Meter at 507-467-2905 ext. 211 to learn more about these opportunities.

MDC DONORS

THE PEOPLE WHO MAKE THE COMMONWEAL DREAM A REALITY

The following list includes all MDC donations (annual pledge level) from January 1, 2022 through December 31, 2022. Donors marked with a plus sign (+) are members of the Commonwealth Theatre Legacy Society. Have you considered remembering the Commonwealth in your will or estate? Contact Jeremy van Meter about our Legacy Society or about any of our donor programs, jeremyvm@commonwealththeatre.org, 507-467-2905 ex 211.

INSTITUTIONAL DONORS IN 2022

Minnesota State Arts Board
The McKnight Foundation
The Schubert Foundation
Fastenal Company
F&M Community Bank

\$2,000+ per year

Bob Kierlin &
Mary Burrichter
David & Candace Arp
Bruce & Pauline Bailey

\$1,000-\$1999 per year

David Bange
Stephen & Martha
Bartenhagen
Kenneth Baughman &
Leandra Sunseri
Barb & Larry Berge
Donna Bond
Sheri Borchering
in memory of Jack
Michael Bostwick &
Connie Williams
Scott Koon & Merrie Bremer
Michael & Char Brown
Stephen Carmichael &
Susan Stoddard
Dan Christianson
Hal Cropp &
Adrienne Sweeney
Jon & Chris DeVries
Phil & Heidi Dybing+
Ron & Rae Evenson
Laura & George Fix
Mark & Elaine Edwards
% Habberstad House
Bed & Breakfast
Janet & Dennis Haller
Jon & Mary Hart
Dennis Heussner
Carol Heyl
Willa & Dave Holger
Janine Holter
Robert & Renee Jacobson
Bill & Lisa Kelly
Lou & Maureen Guillou
Mark & Kris Litow
Lee & Ione Loerch
Merchants Bank
Chris Miller & Hank Taxis
Gail & Phillip Minerich
Ken and Sally Mogren+
Kurt Neuenfeld &
David Watson
Ted Olson
Scott & Angie Taylor
% Pedal Pushers Cafe
Richard & Peggy Perry
Rob & Patty Porter
Chuck & Helene Rehm
Kent & Juanita Ruby
Charles Ruen

David & Joan Ruen
Dale & Sue Scobie
Jim Sheeley
Stephen & Julie Troutman
Julie & David Warner
Christopher & Nina Wendt
Barb Soma
% Amish Experience

\$500-\$999 per year

Barb Soma
% E2 Boutique
Duane & Angel Bakke
Michael Bigelow Dixon
David Boen
Heide Buettner
Joseph & Sara Chase
David & Karen Danielson
Linda & David Hennessey+
Craig & Tracy Hurley
Barbara Jackman
Jane B. Jamison
Minette & Paul Johnson
David & Gail Judisch
Susan & Lyle Klug
Kurt & Ann Knodel
Rayson Lorrey &
Wei-Lin Jung
Dr. Thomas &
Leone Mauszycki
Eric & Andrea Miehlisch
Jon & Sarah Pieper
% Old Village Hall
Restaurant
Stephen & Marilyn Riederer
Glenn Rhoads
Richard Rundle
Jane Ryan
Carl Sandquist
Kevin & Leela Scattum
Jessica Schiwer
David Shaw
Burton & Nancy Svendsen
American Legion Post #40
Lanesboro

\$250-\$499 per year

Blake & Beth Abdella
Mimi Abell
Zoe Abrahamson
Laura Adamson
Janey Afseth &
Dwight Scabeck
Shirley & Mark Ahlquist
Bari & Peter Amadio
Drs. John Boeker &
Dory Gardner
% Amethyst Dental Care
Harold & Angie Amsbaugh
Mary Anne Anderson &
June Kazeil
Horace J. &
Rose Marie Andersen
Asahi Loft of Harmony
Charles & Vonnice Aug
Alan Bailey
David & Lori Bakke
% Granny's Liquors

Russell & Cathryn Baldner
Diane & David Banner
Carolyn & Roger Barsness
Dave Beal & Carol Berteotti
Becky Becker
Kathryn & Brad Benke
Harvey Benson &
Bonita Underbakke
Gene & Renee Bergstrom
Andrew & Anita Bisek
JoEllen & Dean Blegen
Michaelaen Bonner &
Scott Gottfried
Donald & Pat Borchering
Craig & Nina Bren
Kathryn Burch
Stela Burdt
William & Diane Burdt
CRW Architecture and
Design Group
Charlotte & James Carey
David & Brenda Carlson
Paul and Bridget Carns
Elaine Case & Bill Wiktor
John & Sandra Castek
Ron & Nancy Christensen
John & Jane Ciecko
George Cipov
Glee & Gordon Claussen
Carol & Sheldon Clay
Gerald Clymer & Ardy Olds
Debra Collum
Sonja Cook
Paul Cooper
Jeff & Lavon Court
Carlo Cuesta &
Dana Gillespie
Jerry Dallmann
Norman & Janette Decker
Joe Deden & Mary Bell
Bob Ditsch
Allen & Marcia Dollerschell
David Drury
Joseph & Lois Duffy
Carol & Marv Eggert
Mary Jo Ellingson
Henry & Carol Elwood
Carol & John Engel
Christopher &
Elizabeth Engel
Hisako Y. & Dale Eppen
Herb Erickson & Helen Kolb
Carmen Fingerson
Anne Flynn & Jon Buggs
Dennis Forsyth
Jill Frieders
Elizabeth & James Fritz
Dick & Marge Fuller
John Gaddo & Nancy North
Jim & Carla Gallina
Shirley Gangstad
Lee & Suzan Gass
Gary & Elaine Gassett
William & Laura Gentry
Bonnie Gibson &
Gretchen Schade
Bill & Sarah Goff
Alan Goldberg & Kay Udey

Richard A. Granum
Jackie Rehm c/o
Green Gables Inn
David Greenberg &
Susan Hodge
Martha & Jim Griesheimer
Paul & Louanne Hamann
c/o High Court Pub
Richard & Diane Haight
Robyn Hansen
Chris & Jessica Hanson
Bill & Eileen Harguth
Janice Heikes & Lee Zook
Paul & Jessica Hemway
Beth Hennessy &
Tom Barnes
Marian Maciej-Hiner
Betsy Holbrook &
Dona Conway
Dick & Bette Houtkooper
Troy & Jenna Iverson
Buster & Annette Johnson
Linda G. Johnson
Tory & Julie Johnson
Karst Brewing
Mary & Ron Kaser
Janelle Kelleher
Norb & Nancy Kelly
Ed & Ann Keuper
Annette & Richard Kiehne
Julie & Tim Kiehne
Ross Kiehne
Jay Kim
Karl & Patricia Knutson
Robert & Sharon Knutson
Marlene & Robert Kohner
Cheryl & Josh Krage
Ron & Nancy Kreinbring
Gordy & Marsha Kuehne
Rachel Kuhnle &
Josiah Laubenstein
Susan & Ron Kurth
Dick & Mary Ellen Landwehr
Martha & John Langowski
Carolyn Larson
Reginald & Jerilyn Laursen
Richard & Penny Leake
Connie & Glenn Leckband
Karen A. Lischer
Jody & Dale Loeffler
Ron & Shaune Luck
Susan & Lyle Luzum
Timothy Mackey
John & Sandra MacLaughlin
Kathy MacLaughlin &
Mike Augustin
Matt Marshall
Ramon G. Martin
Nancy Martinson &
Jeff Kamm
Wendy Mattison
Frank Mcanulty &
Hertha Lange
Jay & Cynthia McLaren
Roger & Lynn Meyer
Paula Michel
Gary & Sharon Miller

DONORS - THE PEOPLE WHO MAKE THE COMMONWEAL DREAM A REALITY

Robert Milligan &
Sharon Danes
Wanda & Craig Mitchell
Terry Morrison
Greg Murphy &
Jean Daywitt
Richard & Karen Nance
Kay Nelson & Jim Parker
Linda Nelson & Mike Larsen
Linnea & Tom Nicol
Dick & Joan Niemiec
Terry & Karen Neneman
Andre & Madeline Novack
Kenneth & Sharon Olson
LeAnn & Gary Olson
Joni & James Osmundson
Dennis & Joan Paulson
David & Becky Pederson
Drew & Cheryl Pellett
Robert & Phyllis Penheiter
Ann & Noel Peterson
Sarah Peterson
% Peterson Creative
Photography & Design
Deborah & Ken Pitzen
Jim & June Reineke
David Reichert &
Jeanne Thoreson
Pat Reymann
Jarrett Richardson
Terry Rindfleisch &
Linda Hirsh

Renata Rislou
Steven & Pam Ristau
Melanie & Dan Ritter
Jose Rivas
Janis Rockabrand &
Jim Wolfe
Kristie & Paul Roeder
Daniel & Brenda Rooney
Edward & Katie Ruen
Dave & Nancy Runningen
Jimmy Schwichtenberg
% S & A Petroleum, Inc.
Peter & Vicki Torkelson
% Scandinavian Inn
Fred & Dianne Schjolberg
Bruce & Kathy Schott
Mark & Mari Schreiter
Matt & Stacey Schultz
Linda Sifford & Tom Sautter
Marilyn Silver in memory of
Howard Silver
Brian & Betty Singer-Towns
Kent Simmonds &
Lynne Sootheran
Kathleen & Delbert Smith
Jeanette Sobania &
Pam Nelms
Jim Spencer &
Michele Valletta
Charlie & Ann Sparks
Michele & Rick Speltz
Byron Stadsfold

Kim & Caren Stelson
Kyle & Julie Stierwalt
Rick & Cheryl Lamon
% Stone Mill Hotel & Suites
Stephen Strickler
Jack & Kay Strobel
Linda Tacke
Edward Taylor
Dave & Marti Gray
% James A. Thompson
House
Daryl & Michele Thompson
Margaret & Bob Vagts
Jeremy van Meter &
Catie Glynn
Violet Walk
Joyce Walker
Sandy & David Webb
Bette & David Weinmann
Kay Wold
Richard & Louise Wolfgramm
Tom Woxland
& Carol Birkland

\$150-\$250 per year

David & Jeanne Wright
Joel & Julie Young
Karen Acker
Jim Boeding
Terry & Renae Boydston
Bertha Boyum
Joanne Broady
Elizabeth Dunn
Jean Ellingson
Claire Ennis
Ruth Fjelstad
Kathie & LeRoy Haynes
Jenine E. Jordahl
James Kunz
Philip Muehe
Gary Olson
Patty Peterson
Brandt Roberts
Bev Spande
Michael Speck
Jane Wolfram

In 2018, we created The Scott Dixon Memorial Fund to honor our dear friend and colleague who moved to a place where cancer could no longer hurt him. Year-to-date donations to the fund stand at \$42,100+ from more than 500 individual donors. To learn more and to make a contribution, please visit the Support page of our website.

CURRENT INDIVIDUAL DONORS

MORE PEOPLE WHO MAKE THE COMMONWEAL DREAM A REALITY

Listed below are all the donors who are not MDC members who generously contributed to the Commonweal in 2022. For a list of MDC donors, see our online program.

To make a donation please use the "Support" page on our website, or send your check to Commonweal Theatre, PO Box 15, Lanesboro, MN 55949. Be sure to write "donation" on the memo line.

Julie & David Aanes
Robert & Karen Abele
Gala Afseth
Phil Albu
Marty Aleman
Doug & Ann Allaire
Janet Allard
Shreyasee Amin
Dan & Vicki Anderson
Lucinda Anderson
Teresa Anderson
Cindy & Gage Andretta
Lizzy Andretta
Robert Angelici
Katie Anthony
Sheila & Steve Arnold
Sharon Ashley
Margo Ashmore
Virginia Aug
Michael Austin
Doug Avoles
M. Robert Ayerhart
Kathy & Bob Baarsch
Macaran Baird
Andy Bakehouse
Susan & Lon Baldus
Sue & Joe Banken
Kate Barr
Franny Barry
Garret Baumler
Jolene Beddow

Robert Bednar
Deb & Brian Benoy
Judith & Richard Bergen
Marjorie Bergstrom
Laurie Roberts &
Cody Beyer
Robin Block
Kent & Karen Bonte
Alice Book
Margaret Boone Nestor
Lindy Borske-Hubbard
Desiree & Bill Borth-Ferie
Daryl Bosma
Judy & Dwight Boyum
Robert & Marvin Bringe
Walter Brink
Rick & Melissa Brown
Jacinta Browne
Nancy Brubaker
Peter Buchen
LuAnn Buechler
Jean Bumgardner
Barb Burchill
Gerald & Bonnie Burns
Jeffrey Burton
Janet & Bob Calander
Barb & Dave Campbell
Stacy Carlisle
Toni Carlstrom
Julee Caspers & Ben Agar
Margaret Cassidy

Tom Cathcart
Dena & Steve Chambliss
April Cheeseman
Pauline Christensen
Heidi & Larry Chladek
Ron Clark
Vicki Cocalis
Christopher &
Suzanne Colby
Briana Colton
Christian Copeland
Amy & Val Cordry
Jeanne & David Cornish
Douglas Croucher
Keith Cygan
Rita Dalzell
Mark Dannenberg
Steve & Karen Date
Laura Demuth
Lisa Denninger
Debra & Douglas Dewanz
Janet Diaz
Hillary Diede
Carol Dixon
Patti Dockendorff
Alan Domnick &
Jennifer Beighley
Chuck Donnelly
Anne Drecktrah
Sandy Drexler
Beverly Drinka

April Drucker
Nathan Dungan &
Susan Hawks
Doug & Diana Lawrence
Rose Eddy
Art & Mary Ann Ekern
Gregory Esleman
Joyce Esquivel
Timothy Evans
Laurie Everitt
Kerry Eversole &
Cindy Cordes
Michele Fallon
Eric & Lisa Farnberg
Anne Marie & David Farning
Geri & Russ Farnsworth
Jerry Fast
Nile Fellows
Will Fellows
Bob & Pat Fiedler
Ann Fields
Wayne & Joan Finnegan
Chad & Stephanie Fisher
Terrisa & Bob Fisher
Norman Fitch
Steven Flo
Robert Foss
Joseph & Joan Francois
David Frank
Fred Frauefelder &
Debbie Spears



COOPERATIVELY

312 West Water Street, Downtown Decorah

**ONEOTA
COMMUNITY
FOOD
COOPERATIVE**
decorah, iowa

OWNED *since 1974*

563-382-4666 • oneotacoop.com

Blue Heron Knittery

Purveyor of fine yarns, knitting & crocheting supplies, books & patterns




**CALL
AHEAD
for
Current
Hours**

www.BlueHeronKnittery.com
300 W. Water, Decorah, IA • (563) 517-1059

www.dragonflybooks.com

GET A BOOK BUZZ...



**DRAGONFLY
BOOKS**

...and fly beyond your imagination
at Dragonfly Books.

Kate Rattenborg, Bookseller.

563-382-4275 • 112 West Water Street
Decorah • info@dragonflybooks.com



This activity is made possible by the voters of Minnesota through a grant from the Minnesota State Arts Board, thanks to a legislative appropriation from the arts and cultural heritage fund.

Apollo

MUSIC FESTIVAL

August 17-26

HOUSTON, MINNESOTA

www.apollomusicfestival.org

"Your Community Banks for Generations."

Fountain, MN
(507) 268-4321
www.fsbfontain.com

FSB
ountain

 **FDIC**

 **Root River**
—STATE BANK—
CHATFIELD MN

 **EQUAL HOUSING
LENDER**

Chatfield, MN
(507) 867-4120
www.rrsbchatfield.com

DONORS - THE PEOPLE WHO MAKE THE COMMONWEAL DREAM A REALITY

Bill French	Maureen Johnson	Valerie & Don McManimon	Scott & Sarah Sailer
Andrea & Richard Frick	Pat Johnson	Steve Medinnus	Tim Sailer
Michelle Fries	Patti & Jerry Johnson	Carol Meinecke	Delaylah Sanchez
Evan Fuller	Jackie & Dean Jones	Kim & Jean Pierre Menard	Terry & Lisa Sanford
Ruth Furan	Joan Kadmas	Russ Mettler	Sonia Sather
Robert Gaines	Debra & Philip Kahler	Joyce & Drew Meyer	Dianne Sattinger
Gayle & Richard Garrity	Teresa Kain	Eugene & Rose Meyer	Daniel Sauk
Charles Gauthier	Jacqueline Kartman	Mark Miedtke	Susan Scharmer
Lynda Giesler	Peter Keller	Barbara & Joel Mielke	Bob & Becky Schilling
Sandy & Tom Giles	Andrea Kelley	Alan Milavetz	Warren & Donna Schimunek
David & Candy Gislason	Rivka Kelly	Annice Miller	Amy Schlake
Elizabeth & Robert Glowack		Chris Miller	Alex Schlesinger
Joe & Sheila Goetzke	Stephen Kemble &	Sandy Miller	Jeff & Theresa Schlesinger
Caron Goll	Joleen Huguein	Kathi Mitchell	Darlene Schober
Mark Goodman	Heather Khelah	Edward Moersfelder	Steven & Nadeane
Ben Gorman	Ken Kidd	Miriam Monasch	Schossow
William Barry Graham	Lynne Kirklin	Brian & Cynthia Morgan	Jon Schroeder
Jesse Grantz	Barbara & Paul Klaas	David Mosher	Paul K. Schulte
Diane Gray	Susan & Bill Kling	Mary Moxness	David Schwartz
Patty Gray	Laurice Kneeskern	Janet & Tom Munger	Jeri Sebo
Taylor Green	Claire Knoke	Colleen Murphy	Julian & Barbara Sellers
Karen Greenslade	Nancy & Jerry Knoth	Kristin Musselman	Michael Senn
Rick & Sue Grooters	Katherine B. Kohl	Donald A. Nelson	Jo Seton & Brad Wronski
Teresa Grossell	Peter Kohner	Gale Nelson	George & Virginia Severson
Beth & Gary Hagemeister	Dan Kosch	Mark Nelson	LaVonne Sharp
Cherie Hales	Becky Kotalik	Loni Kemp &	David & Linda Shihata
Earl & Kris Hammell	Amy Kotsenas	Richard Nethercut	Karen Shives
Mette Hammer &	Laurie & Joel Kramer	Sherry & Marc Nichols	Marianne Shumaker
Sam Townswick	Anne Marie &	Bruce & Lori Nicklay	Jack Sieggellak
David Hammond	Keith Kramlinger	Patricia Norman	Ray Simon
Diane Hansmeier	Pamela Kranzler	Ellen Nyberg	Jody Skolnick
Jean & Don Hanson	Ron & Nancy Kreinbring	Don O'Brien	Carolyn & Tom Smith
Robert Hanson	Abigail Kruger	Louanne O'Brien	Debbie Smith
Amy Harbin	Tom & Joann Kujawa	Stef O'Keefe	Eric Smith
Marilyn Harstad	Patricia Kummeth	Richard Ohlenberg	Fred Smith & La Rae Roder
Rachel Hart	Bradley Kuntz	Lisa Okoren	Patrick & Linda Smith
Linda & Dave Harvey	Fred Kurtz	Carol Olson	Carolyn & Tom Smith
Meg Hasbrouck	Megan Lamaack	Doug Olson	William & Judy Smithson
Jeffrey Hatcher	Margaret Lambert	Jesse Parsons	Linnea Sodergren
Eva Haupt	Edith & Larry Langsev	Roger & Joyce Peckover	Sonja Sola
Christine Havlik	Daniel LaRocque	Betty & Gary Pedersen	Kay & George Spangler
Sarah Hawkins	Barbara Larsen	Daniel Stock & Megan Pence	Steve & Shelley Sperling
Jim & Gladdie Hebl	Bruce & Jan Larson	Mary & Shane Perry	Heidi Ann Spesard Noble
Rick & Jamie Heiden	Kristine & Michael Larson	Keith Persons	Jean & John Spitzer
Jay & Deborah Heiken	Bob & Marilyn Larson	Ron Peterson	Brad Spoden
Corey Helser	Tina Larson	Darlene Petit	Randy & Lori Stangler
Gail Henry	Martin LaVenture	Vanessa Pfizenmaier	Shirley & John Stanich
Don & Linda Herman	Kari Lawson	Ivy Pillers	Leslie Stauber
Mark Hermann	Harriet Lawston	Gordon & Jan Pohlman	Chad Steinfeldt
Mark & Gay Herzberg	Karen A. Lee	Kathy Porter	Eric Stevens
Kathryn Hesse	Jeff Leland	Sara Porter	Patricia Stockdale
Pat Hinkie	Tim Lenartz	Deborah Price	Carol Stoddard
Andrea Hoffman	Adam Lenehan	Curt & Beverly Proud	David & Rachel Storlie
Sue & Tom Holst	Annie Levenson-Falk	Andrew & JoAnna Pruett	Kathryn Struck
Alan Horn	John Lieske	Dana Puffer & Paula Zollman	Kent Swan
Keith & Deborah House	Carl Lindberg	Callie Pulvermacher	Carol Swanson
Stephen Houtz	Kathleen Lindblad	Kathleen Quinn	Kyle Swanson
Charlotte Hovet	Carol Ann Lindenfelser	Kristin Raab	Peter Swanson
Jean & Stevan Huber	Robert & Leslie Litwiller	Ellen Rasmussen	Cynthia Swessel-Hofer
Cynthia Huggenvik	Linda Long	Bernadette Reinhart	Pat & Glenn Tabor
Bonnie & Joel Hulsing	Elizabeth Lopp	Deb & Mike Resman	Janis & Rodney Tanner
Steven & Sandra Hunt	Diane & Norbert Lovstuen	Carlene & Cameron Roberts	Megan Tapp
Susan Hurlbaeus	Jackie Wolter Luna	Kay Robinson	Carol Taylor
Kathy & Gary Huschle	Christiana Lundholm	Megan Roche	Wintlett Taylor-Browne
Dr. Theresa Incagnoli	Mike Lynn	Bryan Roecker	Mollie & John Theel
Tom Irvine	Janis Lysen	Ceryl & Bob Roediger	Terry Therneau
Larry Iverson	Susan Mack	Steve & Janene Roessler	Mary Thoen
Jessi Jablonski	Dennis Magnuson	Carol & Wayne Rogelstad	Ann & Mark Thompson
Judy Jacobson	Veronica Mahlike	Bonnie Ronning	Jim Thompson
Lynne & Willard Jacobson	Katie & Matthew Maker	Dick & Joanne Rosener	Jo Marie Thompson
Avis Jensen	John Malinski	Tinne Rosenmeier	Cathy Tiegs
Lilly & Mark Jensen	Christine Mattison	Katherine Row	Diane & Bill Tisue
Ronald Jensen	Betty Mattson	Jodi Rushing	Steven & Mary Jo Tittl
Jaclyn Johnson	Patricia McCleese &	Atul Ryan	Suzanne Toce
Janet & John Johnson	John Davenport	Ole Ryan	Nancy Toensing
Kent & Janice Johnson	Heather McCormack	Mary Sack	Johanna Stammmeier-Toole

DONORS - THE PEOPLE WHO MAKE THE COMMONWEAL DREAM A REALITY

Victor Torres
June Torrison
Mary Tronick
Judy Trousdell
Matthew Troyer
Kristen Underwood
Troy & Deann Underwood
Carroll Vance
Tom & Joann Van Meter
Kelli Venzke
Andrew Vorwerk

John & Kelly Vriezen
Judy Ward
John Wareham
Bonnie Warrington
Linda & Robert Watson
Mary Waudby
Lisa Weaver
Scott Weber
Steven Weekley
Elaine & Harold Welda
Emily Wessing

Chris & Jeff White
Thomas White
Mark Whittenburg
Kari Wilkemeyer
Vicki Willard
Andrew Willette
John Williams
Steve & Dawn Witcraft
Bob Wittrock
Michael Wojcik
Karin Wollan

David & Gail Wood
Jennifer Wood
Dale Wulf
Anne & Greg Yakle
Scott Yess
David & Judy Young
Ann Yourell & Steve Sharp
Brandon Zembal
Nan & Scott Zosel



concessions

available before the show
and during intermission.

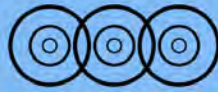
Avoid the line!
**Pre-order your intermission
treats before the show.**



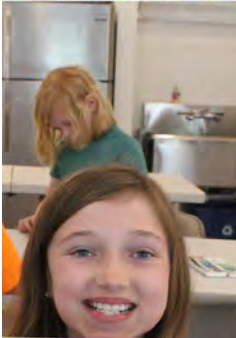
Please note: concessions are not allowed in the theatre.

ROCHESTER REP THEATRE

www.rochesterrep.org



LANESBORO ARTS



Galleries

year-round exhibitions

Rhythms on the Root

outdoor summer music

Art in the Park

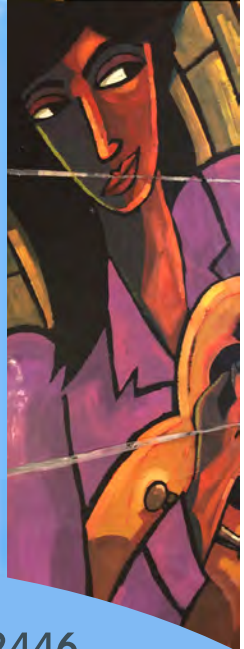
Saturday, June 17, 2023

Arts Campus

public art & education

St. Mane Theatre

music, theater, dance, and more



lanesboroarts.org // 507-467-2446

PROFESSIONAL LIVE THEATRE
COMMONWEAL
2023 SEASON



BERNHARDT/HAMLET
BY THERESA REBECK

HIGH COMEDY +
HUMAN DRAMA
MAR 25 – JUN 24

DEATHtrap
BY IRA LEVIN

A DEVILISHLY CLEVER
THRILLER
MAY 6 – AUG 19

WOMEN IN JEOPARDY!
BY WENDY MACLEOD

A FLIRTY COMIC
CAPER
JUL 1 – OCT 21

DR. JEKYLL & Mr. Hyde
ADAPTED BY JEFFREY HATCHER

A HORROR CLASSIC
REIMAGINED
AUG 26 – OCT 29

she LOVES me
BY JOE MASTEROFF,
SHELDON HARNICK, & JERRY BOCK

AN EFFERVESCENT
MUSICAL COMEDY
NOV 4 – DEC 23



Peterson Creative

PHOTOGRAPHY & DESIGN



Beautiful
PORTRAIT ART FOR YOUR HOME.



CONTACT SARAH TODAY TO SCHEDULE YOUR SESSION.

Sarah Peterson, M. Photog., Certified Professional Photographer

WWW.PETERSONCREATIVEPHOTO.COM | 507.421.9906

 petersoncreative  petersoncreative  petersoncreativ

FAMILIES | SENIOR YEAR | REUNIONS | CHILDREN